

# 2011 Ford Super Duty F-550 DRW Chassis Cab XLT ONLY 59K MILES!

**Zach Polsky 856-693-3181**

View this car on our website at [njtruckking.com/6367685/ebrochure](http://njtruckking.com/6367685/ebrochure)



Our Price **\$49,900**

## Specifications:

<b>Year:</b>	2011
<b>VIN:</b>	1FDUF5GY9BEC42019
<b>Make:</b>	Ford
<b>Model/Trim:</b>	Super Duty F-550 DRW Chassis Cab XLT ONLY 59K MILES!
<b>Condition:</b>	Pre-Owned
<b>Body:</b>	Other
<b>Exterior:</b>	Tuxedo Black Metallic
<b>Engine:</b>	6.8L SOHC EFI TRITON 30-VALVE V10 ENGINE
<b>Interior:</b>	Steel Cloth
<b>Mileage:</b>	59,020
<b>Drivetrain:</b>	Rear Wheel Drive

2011 FORD F-550 2-CAR ROLLBACK

~XLT PACKAGE~

6.8L V10 GAS ENGINE

AUTOMATIC TRANSMISSION

( 59,020 ORIGINAL / ACTUAL MILES )

1-OWNER

1-DRIVER

CLEAN CARFAX

NO PAINTWORK

NON SMOKER

RUST FREE TRUCK !

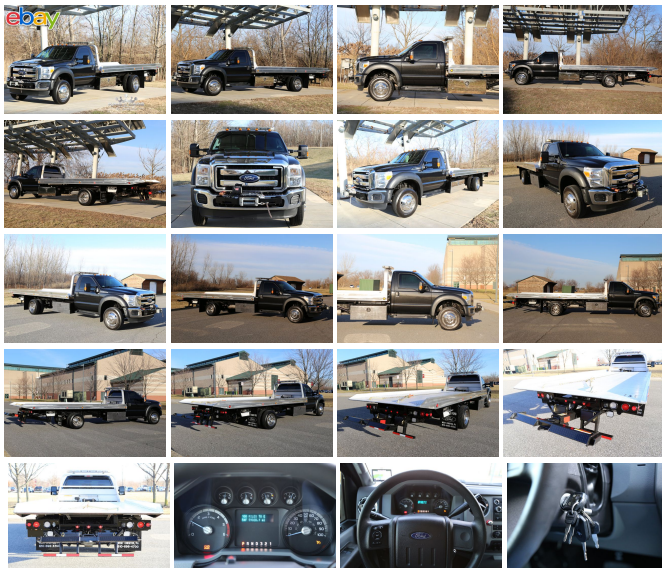
METICULOUSLY MAINTAINED

19"6" JERR-DAN ALUMINUM BED WITH REMOTE WINCH !

W/WHEELLIFT

ALL CHAINS AND STRAPS INCLUDED

BEST COLOR COMBO



2 SETS OF KEYS

ALL THE OPTIONS !

NAVIGATION

FORD SYNC

CD PLAYER

TINTED GLASS

STROBE LIGHTS

LED LIGHTS

STREAM LIGHT FLASH LIGHT

FRONT 8K WINCH WITH REMOTE

ORIGINAL OWNERS MANUALS

TIRES LIKE BRAND NEW

THIS TRUCK IS IN LIKE BRAND NEW !

ONLY USED TO HAUL AUCTION CARS !

TRUCK IS IMMACULATE !

YOU WILL NOT FIND A NICER USED ROLLBACK ANYWHERE!

WILL NOT LAST !

BEST OF THE BEST

DON'T SNOOZE AND LOSE BECAUSE YOU WILL NOT FIND  
ANOTHER LIKE IT !

\$49,900

---

2011 Ford Super Duty F-550 DRW Chassis Cab XLT ONLY 59K MILES!

King of Cars and Trucks - 856-693-3181 - View this car on our website at [njtruckking.com/6367685/ebrochure](http://njtruckking.com/6367685/ebrochure)

**Our Location :**



2011 Ford Super Duty F-550 DRW Chassis Cab XLT ONLY 59K MILES!  
 King of Cars and Trucks - 856-693-3181 - View this car on our website at [njtruckking.com/6367685/ebrochure](http://njtruckking.com/6367685/ebrochure)

**Installed Options**

**Interior**

- Color-coordinated instrument panel -inc: glove box, (4) air registers w/positive shutoff, pwr point & (4) upfitter switches
- Perimeter anti-theft alarm- 11.5" day/night rearview mirror- Accessory delay
- Auxiliary pwr point- Black vinyl steering wheel w/cruise controls
- Cloth 40/20/40 split bench seat -inc: 20% center under seat storage, center armrest, storage, cup holders
- Color-coordinated carpet full floor covering- Color-coordinated carpeted floor mats
- Color-coordinated door trim panel -inc: soft armrest, grab handle, reflector, molded upper applique, upper & lower map pockets
- Color-coordinated molded cloth headliner- Color-coordinated scuff plates
- Color-coordinated vinyl sun visors -inc: LH pocket, RH covered mirror - Cruise control
- Dash-top tray- Door activated dome lamp w/delay, I/P switch operation
- Dual color-coordinated coat hooks- Dual front grab handles- Dual map lights
- Front passenger roof ride handles- I/P mounted dual cup holders- Inside hood release
- Instrumentation -inc: multifunction switch message center w/ice blue lighting
- Manual air conditioning -inc: black vents w/chrome rings - Manual driver lumbar support
- Oil minder system- Pwr door locks w/backlit switches
- Pwr windows -inc: driver side one-touch down feature, backlit switches
- Remote keyless entry w/(2) key fobs & perimeter anti-theft alarm - Secondary glove box
- Securilock anti-theft ignition system- Tilt & telescoping steering wheel/column

**Exterior**

- 19.5" argent painted steel wheels- Rear door/window privacy tinted glass
- 225/70R19.5G BSW tires -inc: (2) front all-season & (4) rear all-season tires
- 3-blink lane change signal- Black door handles
- Chrome grille surround w/medium platinum insert
- Chrome steel front bumper w/grained MIC top cover - Dual beam jewel headlights
- Fixed rear window- Front fender vents- Front license plate bracket

**Option Packages**

**Factory Installed Packages**

6.8L SOHC EFI TRITON 30-VALVE V10 ENGINE	
ALL-WEATHER FLOOR MATS	\$60
XLT INTERIOR PKG -inc: 6-way pwr driver seat, pwr adjustable gas & brake pedals, autolamp, rainlamp, auto lock/unlock, SecuriCode keyless entry keypad	\$795
TUXEDO BLACK METALLIC	
STEEL, CLOTH 40/20/40 SPLIT BENCH SEAT -inc: 20% center under seat storage, center armrest, cup holder	
XLT SERIES ORDER CODE	
19.5" FORGED POLISHED ALUMINUM WHEELS -inc: bright hub covers & center ornaments	\$1,095
<b>Option Packages Total</b>	<b>\$1,950</b>

- Manual telescoping trailer tow mirrors w/pwr heated glass, integrated clearance lights & turn signals & 2-way fold, heated convex spotter mirror
- Roof clearance lights- Solar tinted glass- Underhood service light
- Variable intermittent windshield wipers

## Safety

- Color-coordinated instrument panel -inc: glove box, (4) air registers w/positive shutoff, pwr point & (4) upfitter switches
- Perimeter anti-theft alarm- 11.5" day/night rearview mirror- Accessory delay
- Auxiliary pwr point- Black vinyl steering wheel w/cruise controls
- Cloth 40/20/40 split bench seat -inc: 20% center under seat storage, center armrest, storage, cup holders
- Color-coordinated carpet full floor covering- Color-coordinated carpeted floor mats
- Color-coordinated door trim panel -inc: soft armrest, grab handle, reflector, molded upper applique, upper & lower map pockets
- Color-coordinated molded cloth headliner- Color-coordinated scuff plates
- Color-coordinated vinyl sun visors -inc: LH pocket, RH covered mirror - Cruise control
- Dash-top tray- Door activated dome lamp w/delay, I/P switch operation
- Dual color-coordinated coat hooks- Dual front grab handles- Dual map lights
- Front passenger roof ride handles- I/P mounted dual cup holders- Inside hood release
- Instrumentation -inc: multifunction switch message center w/ice blue lighting
- Manual air conditioning -inc: black vents w/chrome rings - Manual driver lumbar support
- Oil minder system- Pwr door locks w/backlit switches
- Pwr windows -inc: driver side one-touch down feature, backlit switches
- Remote keyless entry w/(2) key fobs & perimeter anti-theft alarm - Secondary glove box
- SecurILock anti-theft ignition system- Tilt & telescoping steering wheel/column

## Mechanical

- TorqShift 5-speed automatic transmission w/OD -inc: tow/haul mode (REQ: 99Y Engine)
- (2) front tow hooks- (40) gallon aft-axle fuel tank- 141" wheelbase
- 155-amp HD alternator- 4.88 axle ratio (REQ: 99Y Engine)
- 6.8L SOHC EFI Triton 30-valve V10 engine
- 7-wire trailer tow harness w/relays, blunt cut & labeled - 78 amp/hr 750 CCA battery
- Dual rear wheels- Front/rear stabilizer bars- HD gas shock absorbers
- Mono-beam front axle w/coil spring suspension- Pwr 4-wheel disc brakes w/hydro boost
- Pwr steering w/steering damper- Rear auxiliary springs- Rear wheel drive
- Stationary elevated idle control (SEIC)
- Trailer brake controller \*Intended for use only w/trailers having electric brakes\*

King of Cars and Trucks

[njtruckking.com](http://njtruckking.com)

856-693-3181

1229 Broadway

Westville, New Jersey 08093

© 2024 AutoRevo - All rights reserved. - Powered by AutoRevo