

## 2009 HUMMER H3 SUV Luxury

View this car on our website at [fuelmotorcars.com/6362758/ebrochure](http://fuelmotorcars.com/6362758/ebrochure)

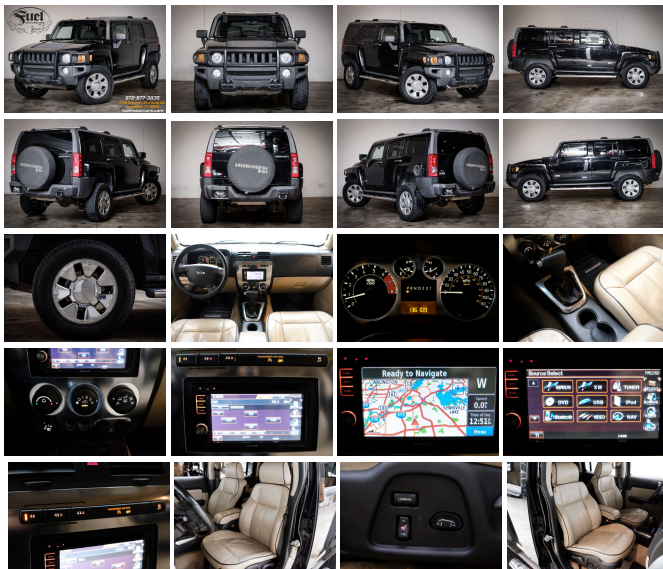


Our Price **\$9,950**

### Specifications:

<b>Year:</b>	2009
<b>VIN:</b>	5GTEN13E898141037
<b>Make:</b>	HUMMER
<b>Stock:</b>	FJ4706
<b>Model/Trim:</b>	H3 SUV Luxury
<b>Condition:</b>	Pre-Owned
<b>Body:</b>	SUV
<b>Exterior:</b>	Black
<b>Engine:</b>	ENGINE, 3.7L DOHC 5-CYLINDER MFI
<b>Interior:</b>	Leather
<b>Mileage:</b>	136,083
<b>Drivetrain:</b>	4 Wheel Drive
<b>Economy:</b>	City 14 / Highway 18

Beautiful H3/ Carfax Certified No Accidents/ LEATHER/ 4X4/  
This vehicle is cash only or bring your own financing.  
Call 214-392-2934 to set appoint to see the vehicle.



2009 HUMMER H3 SUV Luxury

Fuel Motorcars - 214-392-2934 - View this car on our website at [fuelmotorcars.com/6362758/ebrochure](http://fuelmotorcars.com/6362758/ebrochure)

## Our Location :



2009 HUMMER H3 SUV Luxury

Fuel Motorcars - 214-392-2934 - View this car on our website at [fuelmotorcars.com/6362758/ebrochure](http://fuelmotorcars.com/6362758/ebrochure)

## Installed Options

### Interior

- Seat adjuster, front passenger 8-way power with power lumbar control
- Seats, heated driver and front passenger - Seats, rear 60/40 split-folding
- Console, floor includes removable tray- Floor covering, carpet
- Floor mats, carpeted front, oversized- Steering wheel, leather-wrapped
- Windows, power with driver Express-Down- Retained accessory power
- Door locks, power- Remote Keyless Entry with 2 transmitters and remote panic button
- Cruise control, electronic with set and resume speed
- Theft-deterrent system, vehicle, PASSlock II- Air conditioning, single-zone manual
- Defogger, rear-window- Glovebox, passenger-side
- Owners publication (Retail orders only)- Cup holders, 2 front and 1 rear
- Power outlets, 3 auxiliary with covers, 12-volt, includes 2 front and 1 in the rear cargo area
- Mirror, inside rearview auto-dimming with 8-point compass and outside temperature display
- Visors, driver and front passenger includes vanity mirror on passenger side
- Assist handles, 5 total 1 A-pillar mounted for front passenger, 2 B-pillar and 2 overhead-mounted for outboard rear seats
- Lighting, interior with front and interior dome, reading, cargo, instrument panel courtesy, door switches and illuminated entry
- Cargo cover, fabric
- Seats, front bucket includes driver power lumbar controls, adjustable outboard head restraints and map pockets on seatbacks (Includes (AG1) 8-way power driver seat adjuster, (AG2) 8-way power front passenger seat adjuster and (KA1) heated driver and front passenger seats.)
- Uplevel Decor includes (\*\*3) leather with complementary piping seat and interior trim, first row and second row leather-appointed seats with (AG1) 8-way power driver seat adjuster, (AG2) 8-way power front passenger seat adjuster, (KA1) heated driver and front passenger seats and (NP5) leather-wrapped steering wheel
- Seat adjuster, driver 8-way power with power lumbar control
- Floor mats, carpeted rear seat, oversized- Floor mat, carpeted cargo area, oversized

### Exterior

- Grille, chrome 7-slot
- Headlamps, dual composite halogen with automatic exterior lamp control
- Fog lamps, front, halogen- Mirrors, outside power-adjustable, manual-folding
- Bumpers, front and rear steel (not jackable)- Luggage rack side rails, roof-mounted
- Tire, full-size spare, rear swing-gate mounted - Tires, P265/75R16 all-terrain, blackwall
- Wheels, 5 - 16" x 7.5" (40.6 cm x 19.1 cm) aluminum
- Body, driver-side-hinged swing gate with fixed glass
- License plate provision, front includes bolts- Wiper, rear wiper/washer
- Wipers, front intermittent, variable, wiper/washer
- Glass, Solar-Ray deep-tinted (all windows except light-tinted glass on windshield, driver- and front passenger-side glass)

## Safety

- Seat adjuster, front passenger 8-way power with power lumbar control
- Seats, heated driver and front passenger - Seats, rear 60/40 split-folding
- Console, floor includes removable tray- Floor covering, carpet
- Floor mats, carpeted front, oversized- Steering wheel, leather-wrapped
- Windows, power with driver Express-Down- Retained accessory power
- Door locks, power- Remote Keyless Entry with 2 transmitters and remote panic button
- Cruise control, electronic with set and resume speed
- Theft-deterrent system, vehicle, PASSlock II- Air conditioning, single-zone manual
- Defogger, rear-window- Glovebox, passenger-side
- Owners publication (Retail orders only)- Cup holders, 2 front and 1 rear
- Power outlets, 3 auxiliary with covers, 12-volt, includes 2 front and 1 in the rear cargo area
- Mirror, inside rearview auto-dimming with 8-point compass and outside temperature display
- Visors, driver and front passenger includes vanity mirror on passenger side
- Assist handles, 5 total 1 A-pillar mounted for front passenger, 2 B-pillar and 2 overhead-mounted for outboard rear seats
- Lighting, interior with front and interior dome, reading, cargo, instrument panel courtesy, door switches and illuminated entry
- Cargo cover, fabric
- Seats, front bucket includes driver power lumbar controls, adjustable outboard head restraints and map pockets on seatbacks (Includes (AG1) 8-way power driver seat adjuster, (AG2) 8-way power front passenger seat adjuster and (KA1) heated driver and front passenger seats.)
- Uplevel Decor includes (\*\*3) leather with complementary piping seat and interior trim, first row and second row leather-appointed seats with (AG1) 8-way power driver seat adjuster, (AG2) 8-way power front passenger seat adjuster, (KA1) heated driver and front passenger seats and (NP5) leather-wrapped steering wheel
- Seat adjuster, driver 8-way power with power lumbar control
- Floor mats, carpeted rear seat, oversized- Floor mat, carpeted cargo area, oversized

## Mechanical

- Brakes, 4-wheel antilock, 4-wheel disc with a unique calibration for 4Lo
- Steering, power, rack-and-pinion
- Suspension, rear semi-floating axle with 2-stage multi-leaf springs
- Suspension, front, independent, heavy-duty with torsion bar- GVWR, 6001 lbs. (2722 kg)
- Skid Plate Package includes skid plates for front and steering/suspension, transfer case and fuel tank
- Recovery hooks, 2 front and 1 rear - Alternator, 125 amps
- Battery, heavy-duty 590 cold-cranking amps, maintenance-free with rundown protection
- Four wheel drive- Transfer case, 2.64:1 2-speed, button-actuated full-time 4WD
- Rear axle, 4.56 ratio
- Transmission, 4-speed automatic, electronically controlled with overdrive, includes leather-wrapped shift handle, must specify
- Engine, 3.7L DOHC 5-cylinder MFI (239 hp [178.2 kW] @ 5800 rpm, 241 lb-ft of torque [325.3 N-m] @ 4600 rpm)

## Option Packages

### Factory Installed Packages

ENGINE, 3.7L DOHC 5-CYLINDER MFI  
 (239 hp [178.2 kW] @ 5800 rpm,  
 241 lb-ft of torque [325.3 N-m]  
 @ 4600 rpm)

All vehicles are pre-owned. The e-Price is a cash price and excludes tax, title, license and \$50.00 doc fee. Prices subject to change. Contact our Sales Team for detailed information.

---

Fuel Motorcars

[fuelmotorcars.com](http://fuelmotorcars.com)

214-392-2934

1700 Surveyor Blvd

Carrollton, TX 75006

© 2019 AutoRevo - All rights reserved. - Powered by [AutoRevo](#)