

2015 Chevrolet Tahoe LTZ

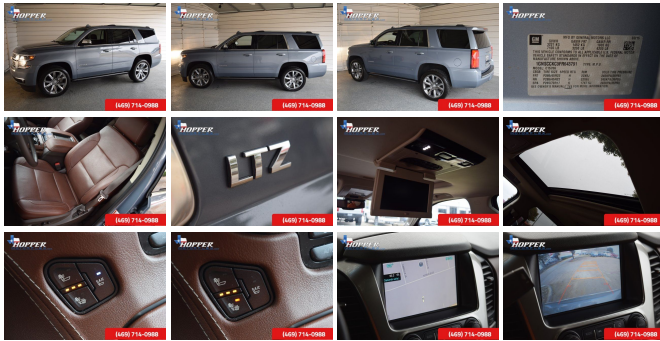
View this car on our website at hoppermotorplex.com/6330138/ebrochure



Our Price **\$44,991**

Specifications:

Year:	2015
VIN:	1GNSSCKC9FR643791
Make:	Chevrolet
Stock:	43791M
Model/Trim:	Tahoe LTZ
Condition:	Pre-Owned
Body:	SUV
Exterior:	Blue
Engine:	ENGINE, 5.3L ECOTEC3 V8 WITH ACTIVE FUEL MANAGEMENT, DIRECT INJECTION AND VARIABLE VALVE TIMING
Interior:	Cocoa/Dune Leather
Mileage:	47,826
Drivetrain:	Rear Wheel Drive
Economy:	City 16 / Highway 23



Tahoe LTZ, 4D Sport Utility, EcoTec3 5.3L V8, 6-Speed Automatic Electronic with Overdrive, RWD, Blue, Cocoa/Dune w/Perforated Leather-Appointed Seat Trim, and Navigation System. If you're looking for an used vehicle in fantastic condition, look no further than this 2015 Chevrolet Tahoe. You won't need to get out your tools for a long, long time when you drive this puppy home. This Tahoe is nicely equipped with features such as Magnetic Ride Control Suspension Package, 4D Sport Utility, 6-Speed Automatic Electronic with Overdrive, Blue, Cocoa/Dune w/Perforated Leather-Appointed Seat Trim, EcoTec3 5.3L V8, Navigation System, RWD, Tahoe LTZ, 10 Speakers, 3.08 Rear Axle Ratio, 3rd Row 60/40 Power Fold Split-Bench, 3rd row seats: split-bench, 4-Wheel Disc Brakes, 5 12-Volt Auxiliary Power Outlets, ABS brakes, Adjustable pedals, Air Conditioning, AM/FM radio: SiriusXM, Auto-dimming door mirrors, Auto-Dimming Inside Rear-View Mirror, Auto-dimming Rear-View mirror, Automatic temperature control, Blind Spot Sensor, Bluetooth?? For Phone, Bodyside moldings, Bose Centerpoint Premium 10-Speaker Surround Sound, Brake assist, Bumpers: body-color, CD player, Compass, Delay-off headlights, Driver & Front Passenger Airbags, Driver door bin, Driver vanity mirror, Dual front impact airbags, Dual front side impact airbags, Electronic Stability Control, Emergency communication system, Exterior Parking Camera Rear, Floor Console, Fog Lamps, Forward Collision Alert, Front & Rear Parking Assist, Front anti-roll bar, Front Bucket Seats, Front Center Armrest, Front dual zone A/C, Front fog lights, Front Heated Reclining Bucket Seats, Front reading lights, Front wheel independent suspension, Fully automatic headlights, Garage door transmitter, Hands Free Power Liftgate, Heated & Cooled Driver & Front Passenger Seats, Heated 2nd Row Seats, Heated door mirrors, Heated front seats,

Heated Leather Wrapped Steering Wheel, Heated rear seats, Heated steering wheel, Heavy-Duty Rear Locking Differential, High-Intensity Discharge Headlights, Illuminated entry, Keyless Start Switch, Lane Departure Warning & Safety Alert Seat, Low tire pressure warning, Memory seat, Memory Settings, MP3 decoder, Occupant sensing airbag, Outside temperature display, Overhead airbag, Overhead console, Panic alarm, Passenger door bin, Passenger vanity mirror, Passive Entry System, Pedal memory, Perforated Leather-Appointed Seat Trim, Power Adjustable Pedals, Power door mirrors, Power driver seat, Power passenger seat, Power Release 2nd Row Bucket Seats, Power steering, Power Tilt & Telescoping Steering Column, Power windows, Power-Folding Heated Outside Mirrors, Premium audio system: Chevrolet MyLink, Radio: Chevrolet MyLink w/Navigation/AM/FM Stereo, Rain sensing wipers, Rear air conditioning, Rear anti-roll bar, Rear Cross-Traffic Alert, Rear reading lights, Rear window defroster, Rear window wiper, Remote Keyless Entry, Remote keyless entry, Roof rack: rails only, Security system, Side Blind Zone Alert w/Lane Change Alert, Single-Slot CD/MP3 Player, SiriusXM Satellite Radio, Speed control, Speed-sensing steering, Split folding rear seat, Spoiler, Steering wheel memory, Steering wheel mounted audio controls, Tachometer, Telescoping steering wheel, Tilt steering wheel, Traction control, Trip computer, Turn signal indicator mirrors, Universal Home Remote, Variably intermittent wipers, Ventilated front seats, Voltmeter, Wheels: 20" x 9" Polished-Aluminum, and Wireless Charging. The previous owner had all service work done at Hopper Motorplex. It's been fully serviced and inspected by our certified mechanical staff.

2015 Chevrolet Tahoe LTZ

Hopper Motorplex - 214-544-0102 - View this car on our website at hoppermotorplex.com/6330138/ebrochure

Our Location :



2015 Chevrolet Tahoe LTZ

Hopper Motorplex - 214-544-0102 - View this car on our website at hoppermotorplex.com/6330138/ebrochure

Installed Options

Installed Options

Interior

- Seating, front bucket with Perforated leather-appointed heated and cooled seat cushions 12-way power driver and passenger seat includes 6-way power cushions, driver seat 2-position memory, 4-way power lumbar control and power recline
- OnStar with 4G LTE provides a built-in Wi-Fi hotspot to connect to the internet at 4G LTE speeds (Only on vehicles built after 10/5/14. Visit www.onstar.com for vehicle availability, details and system limitations. Services and connectivity may vary by model and conditions. 4G LTE service available in select markets. 4G LTE performance based on industry averages and vehicle systems design. Some services require data plan.)
- Seat trim, perforated leather-appointed- Seat adjuster, front passenger 6-way power
- Seats, heated and cooled driver and front passenger
- Memory settings recalls presets for driver power seat adjuster and pedals (Also includes memory presets for outside rearview mirrors and power steering column.)
- Seats, second row bucket, power release- Seats, heated second row
- Seats, third row 60/40 split-bench, power fold
- Console, floor with storage area, cup holders, SD card slot and auxiliary jack
- Floor covering, color-keyed carpeting
- Floor mats, color-keyed carpeted first and second row, removable
- Steering column, power tilt and telescopic- Steering wheel, leather-wrapped
- Steering wheel, heated, leather-wrapped and color-keyed with theft-deterrent locking feature
- Steering wheel controls, mounted audio and cruise controls includes Driver Information Center controls
- Display, driver instrument information enhanced, multi-color
- Door locks, power programmable with lockout protection
- Passive Entry System includes (AQQ) Remote Keyless Entry - Remote vehicle start
- Windows, power, all express down, front express up
- Cruise control, electronic with set and resume speed (Not included when (Y66) Adaptive Cruise Control is ordered.)
- Universal Home Remote includes garage door opener, programmable
- Pedals, power-adjustable for accelerator and brake
- Climate control, tri-zone automatic with individual climate settings for driver, right-front passenger and rear passengers
- Defogger, rear-window electric- Power outlet, 110-volt
- Power outlets, 5 auxiliary, 12-volt includes outlets in the instrument panel, console, back of console, 1 in 3rd row and 1 in cargo area (when bench seat is ordered, the outlet on the back of the console is lost)
- Mirror, inside rearview auto-dimming
- Conversation mirror (Deleted when (UTT) Theft Protection Package is ordered.)
- Assist handles, all seats
- Lighting, interior with dome light, driver- and passenger-side door switch with delayed entry feature, cargo lights, door handle or Remote Keyless Entry-activated illuminated entry and map lights in front and second seat positions.
- Cargo management system- Cargo net

Exterior

- Wheels, 20" x 9" (50.8 cm x 22.9 cm) polished-aluminum
- Tires, P275/55R20 all-season, blackwall- Tire, spare P265/70R17 all-season, blackwall
- Wheel, full-size spare, 17" (43.2 cm) steel
- Tire carrier, lockable outside spare, winch-type mounted under frame at rear
- Fascia, front body-color
- Fascia, rear color-keyed ((PCK) Luxury Package includes chrome accent strip and trailer hitch close out.)
- Luggage rack side rails, roof-mounted (Includes bright accent.)
- Assist steps, Black (LTZ includes chrome accent strip) - Moldings, body-color bodyside
- Headlamps, high intensity discharge- Fog lamps
- Daytime Running Lamps, with automatic exterior lamp control
- Mirrors, outside heated power-adjustable, power-folding and driver-side auto-dimming with integrated turn signal indicators and ground illumination
- Wipers, front intermittent, Rainsense- Wiper, rear intermittent with washer
- Liftgate, hands free, power (Only on vehicles built after 10/5/14.)

Safety

- Seating, front bucket with Perforated leather-appointed heated and cooled seat cushions 12-way power driver and passenger seat includes 6-way power cushions, driver seat 2-position memory, 4-way power lumbar control and power recline
- OnStar with 4G LTE provides a built-in Wi-Fi hotspot to connect to the internet at 4G LTE speeds (Only on vehicles built after 10/5/14. Visit www.onstar.com for vehicle availability, details and system limitations. Services and connectivity may vary by model and conditions. 4G LTE service available in select markets. 4G LTE performance based on industry averages and vehicle systems design. Some services require data plan.)
- Seat trim, perforated leather-appointed- Seat adjuster, front passenger 6-way power
- Seats, heated and cooled driver and front passenger

- Memory settings recalls presets for driver power seat adjuster and pedals (Also includes memory presets for outside rearview mirrors and power steering column.)
- Seats, second row bucket, power release- Seats, heated second row
- Seats, third row 60/40 split-bench, power fold
- Console, floor with storage area, cup holders, SD card slot and auxiliary jack
- Floor covering, color-keyed carpeting
- Floor mats, color-keyed carpeted first and second row, removable
- Steering column, power tilt and telescopic- Steering wheel, leather-wrapped
- Steering wheel, heated, leather-wrapped and color-keyed with theft-deterrent locking feature
- Steering wheel controls, mounted audio and cruise controls includes Driver Information Center controls
- Display, driver instrument information enhanced, multi-color
- Door locks, power programmable with lockout protection
- Passive Entry System includes (AQQ) Remote Keyless Entry- Remote vehicle start
- Windows, power, all express down, front express up
- Cruise control, electronic with set and resume speed (Not included when (Y66) Adaptive Cruise Control is ordered.)
- Universal Home Remote includes garage door opener, programmable
- Pedals, power-adjustable for accelerator and brake
- Climate control, tri-zone automatic with individual climate settings for driver, right-front passenger and rear passengers
- Defogger, rear-window electric- Power outlet, 110-volt
- Power outlets, 5 auxiliary, 12-volt includes outlets in the instrument panel, console, back of console, 1 in 3rd row and 1 in cargo area (when bench seat is ordered, the outlet on the back of the console is lost)
- Mirror, inside rearview auto-dimming
- Conversation mirror (Deleted when (UTT) Theft Protection Package is ordered.)
- Assist handles, all seats
- Lighting, interior with dome light, driver- and passenger-side door switch with delayed entry feature, cargo lights, door handle or Remote Keyless Entry-activated illuminated entry and map lights in front and second seat positions.
- Cargo management system- Cargo net

Mechanical

- Engine, 5.3L EcoTec3 V8 with Active Fuel Management, Direct Injection and Variable Valve Timing includes aluminum block construction (355 hp [265 kW] @ 5600 rpm, 383 lb-ft of torque [518 N-m] @ 4100 rpm)
- Transmission, 6-speed automatic, electronically controlled with overdrive and tow/haul mode
- Rear axle, 3.08 ratio (Not available with (NHT) Max Trailering Package.)
- Suspension Package, Magnetic Ride Control road sensing electronically controlled shock absorbers
- Keyless start, switch- Differential, heavy-duty locking rear- Rear wheel drive
- Cooling, external engine oil cooler, heavy-duty air-to-oil integral to driver side of radiator
- Cooling, auxiliary transmission oil cooler, heavy-duty air-to-oil
- Battery, 720 cold cranking amps with 80 amp hour rating - Alternator, 150 amps
- Trailering equipment includes trailering hitch platform, 7-wire harness with independent fused trailering circuits mated to a 7-way sealed connector and 2" trailering receiver
- GVWR, 7100 lbs. (3221 kg) (Requires 2WD model.)
- Suspension, front coil-over-shock with stabilizer bar
- Suspension, rear multi-link with coil springs- Steering, power

Option Packages

Factory Installed Packages

-
ENGINE, 5.3L ECOTEC3 V8 WITH ACTIVE FUEL MANAGEMENT, DIRECT INJECTION AND VARIABLE VALVE TIMING

includes aluminum block construction (355 hp [265 kW] @ 5600 rpm, 383 lb-ft of torque [518 N-m] @ 4100 rpm)

Hopper Motorplex

hoppermotorplex.com

214-544-0102

900 N Central Expy

McKinney, Texas 75070

© 2019 AutoRevo - All rights reserved. - Powered by [AutoRevo](#)