

## 2011 BMW 7 Series ActiveHybrid 750Li

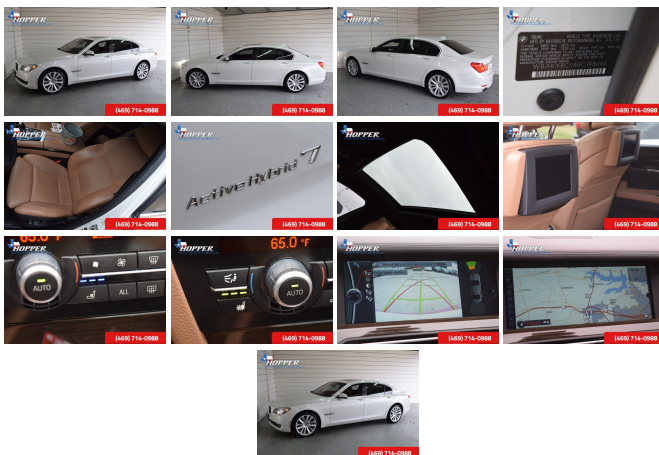
View this car on our website at [hoppermotorplex.com/6328387/ebrochure](http://hoppermotorplex.com/6328387/ebrochure)



Our Price **\$19,991**

### Specifications:

<b>Year:</b>	2011
<b>VIN:</b>	WBAKX8C58BC198044
<b>Make:</b>	BMW
<b>Stock:</b>	98044M
<b>Model/Trim:</b>	7 Series ActiveHybrid 750Li
<b>Condition:</b>	Pre-Owned
<b>Body:</b>	Sedan
<b>Exterior:</b>	Mineral White Metallic
<b>Engine:</b>	4.4L 32-valve twin-turbocharged V8 engine -inc: 4-overhead camshafts, High Precision direct fuel injection, double-VANOS steplessly variable valve timing, 3-phase synchronous electric motor
<b>Interior:</b>	Saddle/Black Leather
<b>Mileage:</b>	61,437
<b>Drivetrain:</b>	Rear Wheel Drive
<b>Economy:</b>	City 17 / Highway 24



Cold Weather Package (Heated Rear Seats and Heated Steering Wheel), Driver Assistance Package (Active Blind Spot Detection, Automatic High Beams, Head-Up Display, and Side & Top View Cameras), Rear Entertainment Package (6-Disc DVD Changer and Rear-Seat Entertainment), ActiveHybrid 750Li, 4D Sedan, 4.4L V8 DOHC Twin Turbocharged, 8-Speed Automatic, RWD, Mineral White Metallic, Saddle/Black w/Nappa Leather Upholstery, 20" x 8.5" Fr & 20" x 10" Rr Light Alloy Wheels, and Power Rear Sunshade. This is the sharpest cars in McKinney! New Car Test Drive said its, "...interior is classy and luxurious, as buyers should expect. It's like a roomy, still, richly appointed cocoon, protecting occupants from an ornery world, though some of the controls and features can be overly complicated. Just about every safety, comfort or convenience feature invented to date for the automobile is available on the 7 Series..." It is nicely equipped with features such as Cold Weather Package (Heated Rear Seats and Heated Steering Wheel), Driver Assistance Package (Active Blind Spot Detection, Automatic High Beams, Head-Up Display, and Side & Top View Cameras), Rear Entertainment Package (6-Disc DVD Changer and Rear-Seat Entertainment), 20" x 8.5" Fr & 20" x 10" Rr Light Alloy Wheels, 4.4L V8 DOHC Twin Turbocharged, 4D Sedan, 8-Speed Automatic, ActiveHybrid 750Li, Mineral White Metallic, Power Rear Sunshade, RWD, Saddle/Black w/Nappa Leather Upholstery, 16 Speakers, 4-Wheel Disc Brakes, ABS brakes, Adaptive suspension, Air Conditioning, AM/FM radio, AM/FM Stereo Single CD, Anti-whiplash front head restraints, Auto tilt-away steering wheel, Auto-dimming door mirrors, Auto-dimming Rear-View mirror, Auto-leveling suspension, Automatic temperature control, Brake assist, Bumpers: body-color, CD player, Delay-off headlights, Door auto-latch, Driver door bin, Driver

vanity mirror, Dual front impact airbags, Dual front side impact airbags, Electronic Stability Control, Emergency communication system, Four wheel independent suspension, Front anti-roll bar, Front Bucket Seats, Front Center Armrest, Front dual zone A/C, Front fog lights, Front reading lights, Fully automatic headlights, Garage door transmitter, Genuine wood console insert, Genuine wood dashboard insert, Genuine wood door panel insert, Head restraints memory, Headlight cleaning, Heated door mirrors, Heated front seats, Heated Multi-Contour Seats w/Lumbar Support, High intensity discharge headlights: Bi-xenon, Illuminated entry, Knee airbag, Leather steering wheel, Low tire pressure warning, Memory seat, MP3 decoder, Nappa Leather Upholstery, Navigation System, Occupant sensing airbag, Outside temperature display, Overhead airbag, Overhead console, Panic alarm, Passenger door bin, Passenger vanity mirror, Power adjustable front head restraints, Power door mirrors, Power driver seat, Power moonroof, Power passenger seat, Power steering, Power windows, Radio data system, Rain sensing wipers, Rear air conditioning, Rear anti-roll bar, Rear dual zone A/C, Rear fog lights, Rear reading lights, Rear seat center armrest, Rear window defroster, Remote keyless entry, Security system, Speed control, Speed-sensing steering, Speed-Sensitive Wipers, Steering wheel memory, Steering wheel mounted audio controls, Tachometer, Telescoping steering wheel, Tilt steering wheel, Traction control, Trip computer, Variably intermittent wipers, and Weather band radio. Some manufacturers cut corners to save money, but BMW didn't try to shave off a single penny when building this excellent 7 Series.

---

2011 BMW 7 Series ActiveHybrid 750Li

Hopper Motorplex - 214-544-0102 - View this car on our website at [hoppermotorplex.com/6328387/ebrochure](http://hoppermotorplex.com/6328387/ebrochure)

#### Our Location :

□

---

2011 BMW 7 Series ActiveHybrid 750Li

Hopper Motorplex - 214-544-0102 - View this car on our website at [hoppermotorplex.com/6328387/ebrochure](http://hoppermotorplex.com/6328387/ebrochure)

#### Installed Options

## Interior

- Multi-contour bucket seats -inc: driver/front passenger 16-way pwr adjustments w/4-way pwr lumbar, articulated upper backrest, adjustable backrest width, adjustable thigh support, driver/front passenger 2-position seat memory, active head restraints w/adjustable side support
- Heated front seats w/fast heating & balance control
- Active front seats w/subtle massage action- Front ventilated seats
- Nappa Leather upholstery
- Programmable central locking system -inc: anti-theft feature, selective unlocking
- Remote keyless entry -inc: engine immobilizer
- Comfort Access keyless entry w/multi-function remote control, keyless start/stop
- Anti-theft alarm system -inc: interior motion detector- Coded driveaway protection
- Remote trunk release- Fineline high-gloss wood trim
- Front console compartment -inc: coinholder, illumination
- Rear center armrest w/storage compartment- Front & rear floor mats
- Pwr tilt/telescopic leather-wrapped multi-function steering wheel -inc: audio & phone controls, automatic tilt-away, 2-position memory
- Black Panel display w/LCD main & trip odometer displays & warning indicators in dial faces
- Electronic analog speedometer & tachometer
- ActiveHybrid display showing the Electric Drive mode in the instrument cluster
- Condition-based Service display w/additional functions accessible through iDrive system
- Expanded Check Control vehicle monitor system
- Pwr windows -inc: key-off operation, "one-touch" open/close, anti-trapping feature
- iDrive system -inc: on-board computer, controller, (8) programmable memory buttons
- Vehicle & key memory- Owner's manual
- Hard drive-based Navigation system w/Voice command & Real Time Traffic Information
- Integrated universal garage door opener- Cruise control
- 4-zone automatic climate control -inc: solar sensor, automatic recirculation, heat-at-rest, automatic ventilation
- Rear window defogger- Dual cupholders, front & rear- Smokers pkg
- Auto-dimming rearview mirror- Front visors w/illuminated vanity mirrors
- Dual illuminated rear vanity mirrors integrated into rear cabin roof lining
- Ambiance lighting in front, rear & door panels- Ski bag- Fully finished trunk

## Exterior

- 19" x 8.5" multi-spoke light alloy wheels (style 235) -inc: P245/45R19 performance run-flat tires
- Xenon automatic adaptive headlights -inc: dynamic auto-leveling, cornering lights, corona rings
- Pwr trunk lid w/push-button close- Automatic trunk lid opening & closing
- Pwr 2-way tilt/slide glass moonroof w/key-off & "one-touch" operation, sunshade, wind deflector
- Body-color roof trim strips
- Body-color bumpers w/hydraulic energy absorbers & (front only) compressible elements
- Free-form halogen foglights- Adaptive brake lights
- Pathway lighting feature, programmable via vehicle & key memory
- Body-color pwr folding heated auto-dimming mirrors -inc: 2-position memory, RH automatic tilt-down in reverse
- Infrared windshield- Climate Comfort laminated glass
- Intermittent rain-sensing windshield wipers w/adjustable & vehicle-speed-sensitive wiping interval, single-wipe control, windshield-washer system w/heated washer jets
- Body-color exterior door handles- Illuminated exterior door handles & ground illumination
- Pwr soft-close automatic doors

## Safety

- Multi-contour bucket seats -inc: driver/front passenger 16-way pwr adjustments w/4-way pwr lumbar, articulated upper backrest, adjustable backrest width, adjustable thigh support, driver/front passenger 2-position seat memory, active head restraints w/adjustable side support
- Heated front seats w/fast heating & balance control
- Active front seats w/subtle massage action- Front ventilated seats
- Nappa Leather upholstery
- Programmable central locking system -inc: anti-theft feature, selective unlocking
- Remote keyless entry -inc: engine immobilizer
- Comfort Access keyless entry w/multi-function remote control, keyless start/stop
- Anti-theft alarm system -inc: interior motion detector- Coded driveaway protection
- Remote trunk release- Fineline high-gloss wood trim
- Front console compartment -inc: coinholder, illumination
- Rear center armrest w/storage compartment- Front & rear floor mats
- Pwr tilt/telescopic leather-wrapped multi-function steering wheel -inc: audio & phone controls, automatic tilt-away, 2-position memory
- Black Panel display w/LCD main & trip odometer displays & warning indicators in dial faces

- Electronic analog speedometer & tachometer
- ActiveHybrid display showing the Electric Drive mode in the instrument cluster
- Condition-based Service display w/additional functions accessible through iDrive system
- Expanded Check Control vehicle monitor system
- Pwr windows -inc: key-off operation, "one-touch" open/close, anti-trapping feature
- iDrive system -inc: on-board computer, controller, (8) programmable memory buttons
- Vehicle & key memory- Owner's manual
- Hard drive-based Navigation system w/Voice command & Real Time Traffic Information
- Integrated universal garage door opener- Cruise control
- 4-zone automatic climate control -inc: solar sensor, automatic recirculation, heat-at-rest, automatic ventilation
- Rear window defogger- Dual cupholders, front & rear- Smokers pkg
- Auto-dimming rearview mirror- Front visors w/illuminated vanity mirrors
- Dual illuminated rear vanity mirrors integrated into rear cabin roof lining
- Ambiance lighting in front, rear & door panels- Ski bag- Fully finished trunk

## Mechanical

- 4.4L 32-valve twin-turbocharged V8 engine -inc: 4-overhead camshafts, High Precision direct fuel injection, double-VANOS steplessly variable valve timing, 3-phase synchronous electric motor
- Start/stop button
- 8-speed automatic transmission -inc: hybrid start/stop function, automatic & manual shift modes w/fully synchronized electronic gear changes
- Rear wheel drive- 120-volt lithium-ion battery w/boost function
- Aluminum front & rear subframes- Front multi-link double-wishbone aluminum suspension
- Rear multi-link integral-V aluminum suspension- Self-leveling air suspension
- Twin-tube gas-pressure shock absorbers- Driving dynamics control
- Dynamic damping control- Adaptive drive
- Vehicle-speed-sensitive variable-assist, variable-ratio rack-&-pinion pwr steering
- Brake Energy Regeneration to convert kinetic energy into usable electrical pwr
- 4-wheel ventilated disc brakes w/electronic brake proportioning
- Electromechanical parking brake

\*\*All payments posted are subject to final approval on up to 72 month 4.9 rate, residualized financing program with \$3000.00 cash down plus tax title license and fees. All vehicles over \$100,000 requires credit approval and Final Numbers confirmed before Test Driving.

Hopper Motorplex

[hoppermotorplex.com](http://hoppermotorplex.com)

214-544-0102

3333 W Plano Pkwy #300

Plano, Texas 75075

© 2024 AutoRevo - All rights reserved. - Powered by AutoRevo