

2012 GMC Yukon Denali AWD

View this car on our website at carbuffs.com/6317236/ebrochure

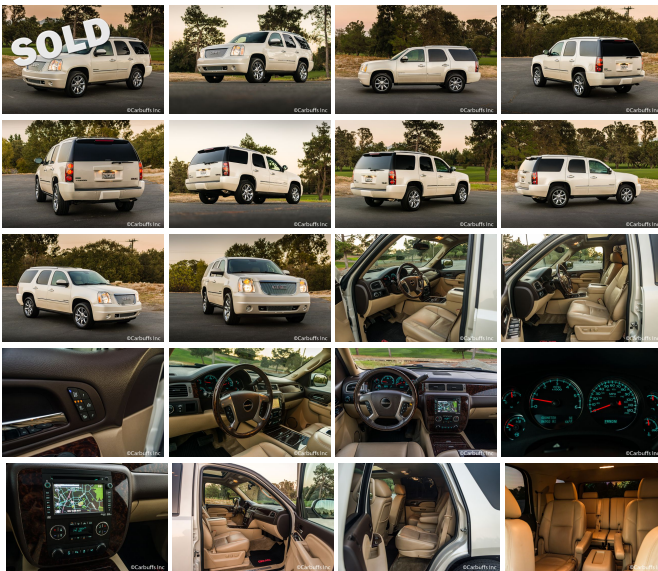


Our Price **\$0**

Specifications:

Year:	2012
VIN:	1GKS2EEF4CR102001
Make:	GMC
Model/Trim:	Yukon Denali AWD
Condition:	Pre-Owned
Body:	SUV
Exterior:	White Diamond Tricoat
Engine:	ENGINE, VORTEC 6.2L VARIABLE VALVE TIMING V8 SFI , ACTIVE FUEL MANAGEMENT
Interior:	Cocoa/Light Cashmere Leather
Transmission:	TRANSMISSION, 6-SPEED AUTOMATIC, ELECTRONICALLY CONTROLLED
Mileage:	86,902
Drivetrain:	All Wheel Drive
Economy:	City 13 / Highway 18

Luxury SUV! Beautiful white diamond pearl exterior with cocoa/light cashmere leather interior. Smooth and powerful 403hp 6.2L V8 engine with automatic transmission. All wheel drive. Loaded with options including: power windows, locks and moonroof, heated and cooled front seats, rear backup camera plus parking sensors, heated second row captains seats, rear DVD, navigation, power rear liftgate, remote starting, and more. 86k miles. Clean title and Carfax report. Excellent dealer service on the Carfax. Local car since new.



2012 GMC Yukon Denali AWD

Carbuffs - (925) 671-2010 - View this car on our website at carbuffs.com/6317236/ebrochure

Our Location :



2012 GMC Yukon Denali AWD
Carbuffs - (925) 671-2010 - View this car on our website at carbuffs.com/6317236/ebrochure

Installed Options

Interior

- Power outlets, 5 auxiliary, 12-volt includes 2 on the instrument panel, 1 in the cargo area, 1 inside the center console and 1 at the back of the console
- Remote vehicle starter system includes Remote Keyless Entry
- Acoustical Insulation Package, premium- Air conditioning, rear auxiliary
- Air conditioning, tri-zone automatic climate control with individual climate settings for driver and right front passenger and rear seat with rear controls located in floor console
- Armrests, driver and passenger doors, padded
- Assist handles, front passenger and second row outboard
- Coat hooks, driver- and passenger-side rear seat and cargo area
- Console, floor with storage area, cup holders and integrated second row audio and HVAC controls
- Console, overhead mini with map lights
- Cruise control, electronic with set and resume speed
- Cup holders, driver and passenger-side in third row side trim
- Cup holders, in front seating area- Cup holders, in second row seating area
- Defogger, rear-window electric- Door locks, power programmable with lockout protection
- Door trim, side reflectors on rear doors
- Driver Information Center, full-functionality included with temperature and compass
- Floor covering, color-keyed carpeting
- Floor mats, color-keyed carpeted first and second row, removable
- Heater, rear auxiliary with rear passenger heating ducts
- Instrumentation, analog with speedometer, odometer with trip odometer, fuel level, voltmeter, engine temperature, oil pressure, tachometer, compass and outside temperature gauge
- Lighting, interior with dome light, driver- and passenger-side door switch with delayed entry feature, cargo lights, door handle or Remote Keyless Entry-activated illuminated entry and map lights in front and second seat positions
- Mirror, inside rearview auto-dimming
- Pedals, power-adjustable for accelerator and brake (Includes memory function with (AN3) front bucket seats.)

Option Packages

Factory Installed Packages

ENGINE, VORTEC 6.2L VARIABLE VALVE TIMING V8 SFI ,
ACTIVE FUEL MANAGEMENT
with E85 FlexFuel capability (403 hp [300.5 kW]
@ 5700 rpm, 417 lb-ft of torque [562.9 N-m] @
4300 rpm)

TRANSMISSION, 6-SPEED AUTOMATIC, ELECTRONICALLY
CONTROLLED
with overdrive, tow/haul mode and tap up/tap
down shifting

SEATS, SECOND ROW CAPTAIN'S CHAIRS
with leather-appointed seating, 2 reclining bucket
seats

ASSIST STEPS, POWER-RETRACTABLE
\$1,095

ENTERTAINMENT SYSTEM, REAR SEAT DVD PLAYER
with remote control, overhead display, 2 sets of
2-channel wireless infrared headphones and
auxiliary audio/video input jacks
\$1,295

LPO, ALL-WEATHER FLOOR MATS, FIRST AND SECOND ROW
\$140

LPO, ALL-WEATHER FLOOR MATS, THIRD ROW

- Seat adjuster, driver 6-way power- Seat adjuster, front passenger 6-way power
- Seat release, power seat release only, second row bench or bucket
- Seats, front bucket with leather-appointed seating 10-way power driver and front passenger seat adjusters on SLT and 12-way power driver and front passenger seat adjuster on Denali, including power lumbar control, power recline, heated seat cushion and seatbacks, 2-position driver memory, adjustable head restraints, storage pockets and floor console
- Seats, heated and cooled driver and front passenger seat cushions and seat backs with perforated leather-appointed seating
- Seats, heated second row
- Seats, second row captain's chairs with leather-appointed seating, 2 reclining bucket seats
- Seats, third row 50/50 split-bench 3-passenger, removable, all-belts-to-seat
- Steering column, Tilt-Wheel, adjustable with brake/transmission shift interlock
- Steering wheel controls, mounted audio controls cruise controls and OnStar Hands-Free calling
- Steering wheel, Deluxe, leather-wrapped
- Steering wheel, heated, leather-wrapped and color-keyed with theft-deterrent locking feature (Includes wood grain trim.)
- Storage bin, behind driver-side rear quarter panel
- Theft-deterrent system, vehicle, PASS-Key III
- Universal Home Remote includes garage door opener, programmable
- Visors, driver and front passenger illuminated vanity mirrors, padded with cloth trim, extends on rod includes corner storage pockets on back of visors, Shale-colored
- Warning tones headlamp on, key-in-ignition, driver and passenger buckle up reminder and turn signal on
- Windows, power with driver Express-Down and lockout features
- XM NavTraffic is available in over 100 markets and works with your vehicle's navigation system to give you continuously updated traffic data right when you need it most - while you're driving. You'll avoid traffic tie-ups, save time and gas by getting alternate routes, and, in some cases, receive traffic speed and drive-time information. Plus, you can use NavTraffic at the same time you're enjoying SiriusXM Satellite Radio. You'll find that once you start using NavTraffic, you won't want to drive without it. (Includes 90 days of service. Included and only available with (UYS) Audio system with navigation. Requires a subscription sold separately by SiriusXM after trial period which is continuous until you call SiriusXM to cancel. Available only in select markets. For more information, see siriusxm.com/navtraffic.)

Exterior

- Luggage rack center rails- Assist steps, Black with chrome insert
- Fascia, front color-keyed- Fascia, rear color-keyed- Fog lamps, front round halogen
- Glass, Solar-Ray deep-tinted (all windows except light-tinted glass on windshield and driver- and front passenger-side glass)
- Grille, unique Denali dual chrome billet grilles with chrome surround
- Headlamps, dual halogen composite with automatic exterior lamp control and flash-to-pass feature
- Liftgate with liftglass, rear door system with rear-window wiper/washer
- Liftgate, rear power-operated controlled from front overhead console, remote key fob or button inside liftgate
- Luggage rack side rails, roof-mounted, Black
- Mirrors, outside heated power-adjustable, power-folding and driver-side auto-dimming, body-color with integrated turn signal indicators and ground illumination. (Includes memory function and curb-tilt.)
- Moldings, body-color bodyside with bright inserts
- Tire carrier, lockable outside spare, winch-type mounted under frame at rear
- Tire, spare P265/70R17 all-season, blackwall- Tires, P275/55R20 all-season, blackwall
- Wheel, 17" (43.2 cm) full-size, steel spare
- Wheels, 4 - 20" x 8.5" (50.8 cm x 21.6 cm) chrome aluminum
- Wiper, rear intermittent with washer
- Wipers, front intermittent wet-arm with flat blade and pulse washers

Safety

- Power outlets, 5 auxiliary, 12-volt includes 2 on the instrument panel, 1 in the cargo area, 1 inside the center console and 1 at the back of the console
- Remote vehicle starter system includes Remote Keyless Entry
- Acoustical Insulation Package, premium- Air conditioning, rear auxiliary
- Air conditioning, tri-zone automatic climate control with individual climate settings for driver and right front passenger and rear seat with rear controls located in floor console
- Armrests, driver and passenger doors, padded
- Assist handles, front passenger and second row outboard
- Coat hooks, driver- and passenger-side rear seat and cargo area
- Console, floor with storage area, cup holders and integrated second row audio and HVAC controls
- Console, overhead mini with map lights
- Cruise control, electronic with set and resume speed
- Cup holders, driver and passenger-side in third row side trim
- Cup holders, in front seating area- Cup holders, in second row seating area
- Defogger, rear-window electric- Door locks, power programmable with lockout protection

3 / 0

SUN, ENTERTAINMENT AND DESTINATIONS PACKAGE

includes additional 9 months of SiriusXM Radio and NavTraffic service, (CF5) power sunroof, (DD8) inside rearview auto-dimming mirror, (UYS) Audio system with navigation and (U42) rear seat DVD entertainment system

\$2,435

SUNROOF, POWER, TILT-SLIDING

with express-open and close and wind deflector

\$995

REAR AXLE, 3.42 RATIO

EMISSIONS OVERRIDE, CALIFORNIA

(allows a dealer in states that require California emissions - Arizona, California, Connecticut, Maryland, Massachusetts, New Jersey, New York, Oregon, Pennsylvania, Rhode Island or Washington - to order Federal emissions for a vehicle that will be registered in a state that has Federal emission requirements).

WHITE DIAMOND TRICOAT

\$995

COCOA/LIGHT CASHMERE, PERFORATED NUANCE LEATHER-APPOINTED SEAT TRIM

SEATS, FRONT BUCKET WITH LEATHER-APPOINTED SEATING

10-way power driver and front passenger seat adjusters on SLT and 12-way power driver and front passenger seat adjuster on Denali, including power lumbar control, power recline, heated seat cushion and seatbacks, 2-position driver memory, adjustable head restraints, storage pockets and floor console

TIRES, P275/55R20 ALL-SEASON, BLACKWALL

WHEELS, 4 - 20" X 8.5" (50.8 CM X 21.6 CM) CHROME ALUMINUM

Option Packages Total

\$7,025

- Door trim, side reflectors on rear doors
- Driver Information Center, full-functionality included with temperature and compass
- Floor covering, color-keyed carpeting
- Floor mats, color-keyed carpeted first and second row, removable
- Heater, rear auxiliary with rear passenger heating ducts
- Instrumentation, analog with speedometer, odometer with trip odometer, fuel level, voltmeter, engine temperature, oil pressure, tachometer, compass and outside temperature gauge
- Lighting, interior with dome light, driver- and passenger-side door switch with delayed entry feature, cargo lights, door handle or Remote Keyless Entry-activated illuminated entry and map lights in front and second seat positions
- Mirror, inside rearview auto-dimming
- Pedals, power-adjustable for accelerator and brake (Includes memory function with (AN3) front bucket seats.)
- Seat adjuster, driver 6-way power- Seat adjuster, front passenger 6-way power
- Seat release, power seat release only, second row bench or bucket
- Seats, front bucket with leather-appointed seating 10-way power driver and front passenger seat adjusters on SLT and 12-way power driver and front passenger seat adjuster on Denali, including power lumbar control, power recline, heated seat cushion and seatbacks, 2-position driver memory, adjustable head restraints, storage pockets and floor console
- Seats, heated and cooled driver and front passenger seat cushions and seat backs with perforated leather-appointed seating
- Seats, heated second row
- Seats, second row captain's chairs with leather-appointed seating, 2 reclining bucket seats
- Seats, third row 50/50 split-bench 3-passenger, removable, all-belts-to-seat
- Steering column, Tilt-Wheel, adjustable with brake/transmission shift interlock
- Steering wheel controls, mounted audio controls cruise controls and OnStar Hands-Free calling
- Steering wheel, Deluxe, leather-wrapped
- Steering wheel, heated, leather-wrapped and color-keyed with theft-deterrent locking feature (Includes wood grain trim.)
- Storage bin, behind driver-side rear quarter panel
- Theft-deterrent system, vehicle, PASS-Key III
- Universal Home Remote includes garage door opener, programmable
- Visors, driver and front passenger illuminated vanity mirrors, padded with cloth trim, extends on rod includes corner storage pockets on back of visors, Shale-colored
- Warning tones headlamp on, key-in-ignition, driver and passenger buckle up reminder and turn signal on
- Windows, power with driver Express-Down and lockout features
- XM NavTraffic is available in over 100 markets and works with your vehicle's navigation system to give you continuously updated traffic data right when you need it most - while you're driving. You'll avoid traffic tie-ups, save time and gas by getting alternate routes, and, in some cases, receive traffic speed and drive-time information. Plus, you can use NavTraffic at the same time you're enjoying SiriusXM Satellite Radio. You'll find that once you start using NavTraffic, you won't want to drive without it. (Includes 90 days of service. Included and only available with (UYS) Audio system with navigation. Requires a subscription sold separately by SiriusXM after trial period which is continuous until you call SiriusXM to cancel. Available only in select markets. For more information, see siriusxm.com/navtraffic.)

Mechanical

- Automatic air level control
- Suspension Package, Autoride bi-state variable shock dampening and rear air-assisted load-leveling, includes (G69) automatic air level control
- All-wheel drive- Alternator, 160 amps- Brakes, 4-wheel antilock, 4-wheel disc
- Cooling, auxiliary external transmission oil cooler, heavy-duty air-to-oil
- Cooling, external engine oil cooler, heavy-duty air-to-oil, integral to driver side of radiator
- Differential, heavy-duty locking rear
- Engine, Vortec 6.2L Variable Valve Timing V8 SFI , Active Fuel Management with E85 FlexFuel capability (403 hp [300.5 kW] @ 5700 rpm, 417 lb-ft of torque [562.9 N-m] @ 4300 rpm)
- Exhaust, aluminized stainless-steel muffler and tailpipe
- GVWR, 7300 lbs. (3311 kg) (Not available on 2WD models.) - Rear axle, 3.42 ratio
- Recovery hooks, 2 front, frame-mounted- Steering, power
- Suspension, front coil-over-shock with stabilizer bar
- Suspension, rear multi-link with coil springs
- Tools, mechanical jack and wheel wrench, stored in rear quarter trim
- Tow/haul mode selector, button located at end of shift lever
- Trailering equipment, heavy-duty includes trailering hitch platform, 7-wire harness with independent fused trailering circuits mated to a 7-way sealed connector and (VR4) 2" trailering receiver
- Transfer case, AWD, electronic automatic system (Not available on 2WD model.)
- Transmission, 6-speed automatic, electronically controlled with overdrive, tow/haul mode and tap up/tap down shifting

Carbuffs

carbuffs.com

(925) 671-2010

2281-A Via De Mercados

Concord, CA 94520

© 2024 AutoRevo - All rights reserved. - Powered by [AutoRevo](#)