

2015 Jeep Wrangler Unlimited Rubicon

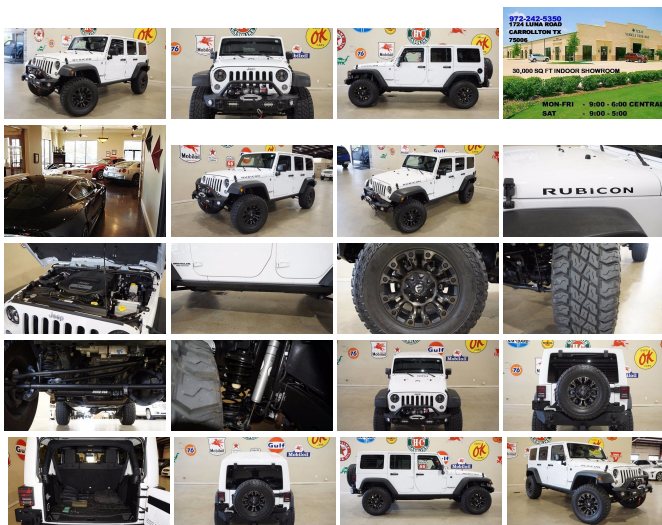
View this car on our website at tveauto.com/6293329/ebrochure



Our Price **\$40,900**

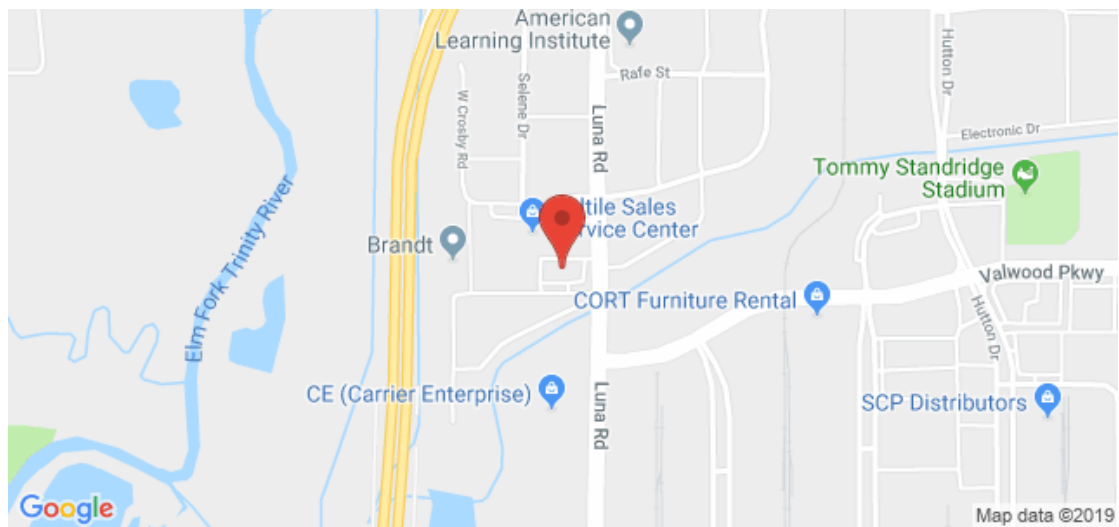
Specifications:

| | |
|--------------------|----------------------------|
| Year: | 2015 |
| VIN: | 1C4BJWFG1FL679006 |
| Make: | Jeep |
| Stock: | 679006 |
| Model/Trim: | Wrangler Unlimited Rubicon |
| Condition: | Pre-Owned |
| Body: | SUV |
| Exterior: | Bright White Clearcoat |
| Engine: | ENGINE: 3.6L V6 24V VVT |
| Interior: | Black |
| Mileage: | 8,172 |
| Economy: | City 16 / Highway 20 |



NATION WIDE FINANCING SUBMIT CREDIT APP
WWW.TVEAUTO.COM OR CALL 972-242-5350 2016 JEEP
WRANGLER UNLIMITED RUBICON 4X4, 3.6L V6 ENGINE, 6 SPEED
MANUAL TRANSMISSION, ONLY 8K, BRIGHT WHITE W/BLACK
CLOTH INTERIOR, CARFAX REPORTS 1 OWNER NO ACCIDENTS,
APPEARS TO BE A NON-SMOKER, DV8 OFF ROAD FRONT
BUMPER WITH LED LIGHTS, SMITTYBILT XRC 9,500 LB WINCH
WITH SYNTHETIC ROPE, APPROX 3IN LIFT KIT WITH FOX 2.0
PERFORMANCE SERIES SHOCKS, TERAFLX STEERING
STABILIZER SHOCK, EVOLUTION 2 LED HEADLIGHTS WITH
RUGGED RIDGE BLACK HEADLIGHT GUARDS, PAINTED TO
MATCH 3 PIECE HARD TOP, BLACK ROCK RAILS, POWER
WINDOWS, POWER DOOR LOCKS, POWER HEATED MIRRORS,
TILT STEERING WHEEL WITH AUDIO & CRUISE CONTROLS,
FRONT BUCKET SEATS WITH MANUAL ADJUSTMENTS,
TRACTION CONTROL, ICE COLD A/C, AM/FM/SIRIUS STEREO
WITH CD PLAYER, U-CONNECT, SELF DIMMING REAR VIEW
MIRROR, DUAL VANITY MIRRORS, RUGGED RIDGE BLACK TAIL
LIGHT GUARDS, DV8 OFF ROAD REAR BUMPER WITH TIRE
CARRIER, MOPAR SLUSH MATS, OWNER'S MANUAL, 2 KEYS/2
REMOTES. 17 IN FUEL VAPOR WHEELS, FRONT TIRES ARE
COOPER LT295/70R/17 WITH APPROX 95% TREAD LIFE
REMAINING, REAR TIRES ARE COOPER LT295/70R/17 WITH
APPROX 95% TREAD LIFE REMAINING. RUNS AND DRIVES
GREAT. GIVE US A CALL @ 972-242-5350 OR STOP BY FOR A
TEST DRIVE. 1724 LUNA RD IN CARROLLTON - 2 MILES NORTH OF
635.

Our Location :



2015 Jeep Wrangler Unlimited Rubicon

Texas Vehicle Exchange - 972-242-5350 - View this car on our website at veauto.com/6293329/ebrochure

Installed Options

Interior

- 6-Way Driver Seat -inc: Manual Recline, Height Adjustment and Fore/Aft Movement
- 4-Way Passenger Seat -inc: Manual Recline and Fore/Aft Movement
- 60-40 Folding Split-Bench Front Facing Fold Forward Seatback Rear Seat
- Manual Tilt Steering Column
- Gauges -inc: Speedometer, Odometer, Engine Coolant Temp, Tachometer, Trip Odometer and Trip Computer
- Power Rear Windows and Removable 3rd Row Windows
- Leather Wrapped Steering Wheel- Front Cupholder- Rear Cupholder- Compass
- Remote Keyless Entry w/Integrated Key Transmitter, Illuminated Entry and Panic Button
- Cruise Control w/Steering Wheel Controls- Manual Air Conditioning- Locking Glove Box
- Interior Trim -inc: Deluxe Sound Insulation, Metal-Look Instrument Panel Insert, Metal-Look Door Panel Insert and Metal-Look Interior Accents
- Leather/Chrome Gear Shift Knob- Cloth Bucket Seats -inc: adjustable head restraints
- Driver And Passenger Visor Vanity Mirrors- Day-Night Auto-Dimming Rearview Mirror
- Full Floor Console w/Locking Storage, 2 12V DC Power Outlets and 1 AC Power Outlet
- Fade-To-Off Interior Lighting- Front Map Lights
- Carpet Floor Trim, Carpet And Rubber Mat
- Full Carpet Floor Covering -inc: Carpet Front And Rear Floor Mats
- Locking Cargo Area Concealed Storage
- Instrument Panel Bin, Dashboard Storage, Driver And Passenger Door Bins
- Delayed Accessory Power
- Power 1st Row Windows w/Driver And Passenger 1-Touch Down
- Power Door Locks w/Autolock Feature- Trip Computer- Outside Temp Gauge
- Analog Display
- Manual Adjustable Front Head Restraints and Fixed Rear Head Restraints
- Front Center Armrest w/Storage- 2 Seatback Storage Pockets
- Sentry Key Engine Immobilizer- Perimeter Alarm- 2 12V DC Power Outlets
- 2 12V DC Power Outlets and 1 AC Power Outlet

Exterior

- Wheels: 17" x 7.5" Polished Mineral Gray
- Tires: LT255/75R17 BSW Off Road -inc: BF Goodrich Brand Tires
- Aluminum Spare Wheel- Full-Size Spare Tire Mounted Outside Rear
- Clearcoat Paint w/Badging- Sunrider Soft Top- Black Front Bumper w/2 Tow Hooks
- Black Rear Bumper w/1 Tow Hook- Black Fender Flares- Black Side Windows Trim
- Black Door Handles- Black Power Heated Side Mirrors w/Manual Folding
- Removable Rear Window- Variable Intermittent Wipers- Deep Tinted Glass
- Fully Galvanized Steel Panels- Convertible w/Fixed Roll-Over Protection
- Body-Colored Grille- Conventional Rear Cargo Access
- Tailgate/Rear Door Lock Included w/Power Door Locks- Front Fog Lamps
- Fully Automatic Aero-Composite Halogen Headlamps

Safety

- 6-Way Driver Seat -inc: Manual Recline, Height Adjustment and Fore/Aft Movement
- 4-Way Passenger Seat -inc: Manual Recline and Fore/Aft Movement
- 60-40 Folding Split-Bench Front Facing Fold Forward Seatback Rear Seat
- Manual Tilt Steering Column
- Gauges -inc: Speedometer, Odometer, Engine Coolant Temp, Tachometer, Trip Odometer and Trip Computer
- Power Rear Windows and Removable 3rd Row Windows
- Leather Wrapped Steering Wheel- Front Cupholder- Rear Cupholder- Compass
- Remote Keyless Entry w/Integrated Key Transmitter, Illuminated Entry and Panic Button
- Cruise Control w/Steering Wheel Controls- Manual Air Conditioning- Locking Glove Box
- Interior Trim -inc: Deluxe Sound Insulation, Metal-Look Instrument Panel Insert, Metal-Look Door Panel Insert and Metal-Look Interior Accents
- Leather/Chrome Gear Shift Knob- Cloth Bucket Seats -inc: adjustable head restraints
- Driver And Passenger Visor Vanity Mirrors- Day-Night Auto-Dimming Rearview Mirror
- Full Floor Console w/Locking Storage, 2 12V DC Power Outlets and 1 AC Power Outlet
- Fade-To-Off Interior Lighting- Front Map Lights
- Carpet Floor Trim, Carpet And Rubber Mat
- Full Carpet Floor Covering -inc: Carpet Front And Rear Floor Mats
- Locking Cargo Area Concealed Storage
- Instrument Panel Bin, Dashboard Storage, Driver And Passenger Door Bins
- Delayed Accessory Power
- Power 1st Row Windows w/Driver And Passenger 1-Touch Down
- Power Door Locks w/Autolock Feature- Trip Computer- Outside Temp Gauge
- Analog Display
- Manual Adjustable Front Head Restraints and Fixed Rear Head Restraints
- Front Center Armrest w/Storage- 2 Seatback Storage Pockets
- Sentry Key Engine Immobilizer- Perimeter Alarm- 2 12V DC Power Outlets
- 2 12V DC Power Outlets and 1 AC Power Outlet

Mechanical

- Engine: 3.6L V6 24V VVT- Transmission: 6-Speed Manual (NSG370)
- 4.10 Rear Axle Ratio- Performance Suspension- GVWR: 5,700 lbs- 50 State Emissions
- Manual Transfer Case- Part-Time Four-Wheel Drive
- Driver Selectable Front Locking Differential- Driver Selectable Rear Locking Differential
- Engine Oil Cooler- 600CCA Maintenance-Free Battery- 160 Amp Alternator
- Towing w/Trailer Sway Control- 4 Skid Plates- 892# Maximum Payload
- HD Shock Absorbers- Front Active w/Driver Control Anti-Roll Bar and Rear Anti-Roll Bar
- Hydraulic Power-Assist Steering- 22.5 Gal. Fuel Tank- Single Stainless Steel Exhaust
- Auto Locking Hubs- Leading Link Front Suspension w/Coil Springs
- Trailing Arm Rear Suspension w/Coil Springs
- 4-Wheel Disc Brakes w/4-Wheel ABS, Front And Rear Vented Discs, Brake Assist and Hill Hold Control
- Electro-Mechanical Limited Slip Differential

Option Packages

Factory Installed Packages

- _____
ENGINE: 3.6L V6 24V VVT

Texas Vehicle Exchange

tveauto.com

972-242-5350

1724 Luna Road

Carrollton, TX 75006

© 2019 AutoRevo - All rights reserved. - Powered by [AutoRevo](#)