



## 2012 Ford F-150 FX2

Johnny Esneault 985-234-9946

**Our Price \$18,995**

**Retail Value \$23,185**

View this vehicle on our website at [nasauto.com](http://nasauto.com)

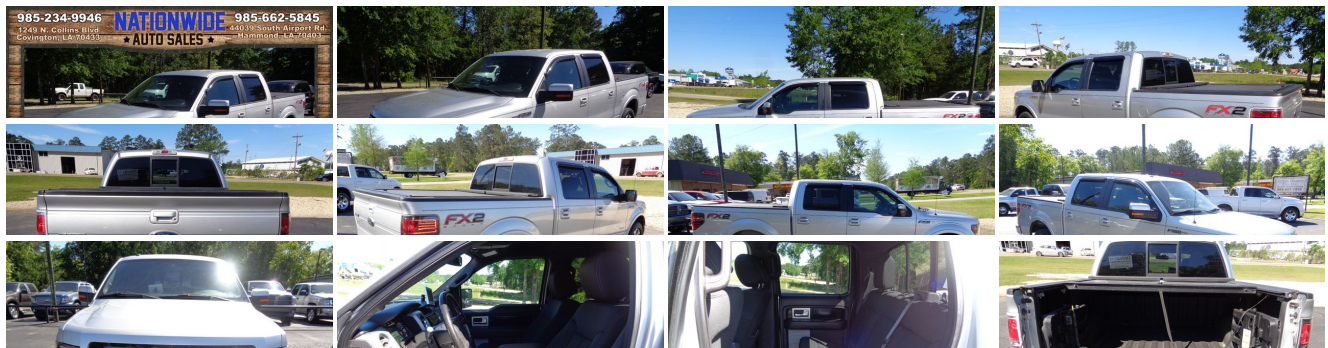
[985-234-9946](tel:985-234-9946)

1249 N. Collins Blvd. , Covington, Louisiana 70433

Photos

Details

Contact





## Specifications:

<b>Year:</b>	2012
<b>VIN:</b>	1FTFW1CT6CFC16313
<b>Make:</b>	Ford
<b>Stock:</b>	C16313
<b>Model/Trim:</b>	F-150 FX2
<b>Condition:</b>	Pre-Owned
<b>Body:</b>	Pickup Truck
<b>Exterior:</b>	Ingot Silver Metallic
<b>Engine:</b>	3.5L V6 ECOBOOST ENGINE
<b>Interior:</b>	Steel Gray Cloth
<b>Mileage:</b>	102,089
<b>Drivetrain:</b>	Rear Wheel Drive
<b>Economy:</b>	City 16 / Highway 22

## Vehicle Description

THIS VEHICLE IS LOCATED AT OUR COVINGTON, LA LOCATION. WE SPECIALIZE IN TRUCKS OF ALL TYPES SUCH AS DIESELS AND 4X4'S. PLEASE CALL TO CHECK THE AVAILABILITY OF OUR INVENTORY. **WE WILL CONSIDER ANY REASONABLE OFFER !!!** WE ALSO CAN HELP WITH FINANCING AND TAKE TRADE-INS. TO VIEW OUR INVENTORY ONLINE GO TO [www.NasAuto.com](http://www.NasAuto.com) OR CALL US @ **985-234-9946**

# Installed Options

## Interior

- 60/40 flip-up rear split bench seat - Front pwr point- Pwr door locks w/autolock feature
- Rear pwr point
- Remote keyless entry w/integrated key transmitter, illuminated entry & panic button
- Vinyl 40/20/40 split bench front seat - 2nd row B-pillar grab handles
- Black ring w/black vanes air conditioning registers - Black urethane steering wheel
- Black vinyl floor covering (N/A w/47R Floor Mats)
- Deployable cupholder under middle seat
- Display center -inc: warning messages & text functions
- Driver & front passenger door scuff plates - Fade-to-off interior lighting- Front map lights
- Front passenger side A-pillar grab handle
- Gauges -inc: fuel gauge, voltmeter, oil pressure, engine coolant temp, speedometer, tachometer, odometer
- Instrument panel mounted cigar lighter- Manual air conditioning
- Overhead console w/(2) storage bins- Perimeter alarm
- Pwr 1st & 2nd row windows w/driver 1-touch down- Rear door cupholders
- SecurLock anti-theft ignition (PATS)- Sunvisors w/driver side strap, passenger mirror
- Tilt steering column

## Exterior

- P255/65R17 all-season OWL tires- (4) full-size doors- 17" gray styled steel wheels
- Argent front/rear step bumper- Black door & tailgate handles
- Black front/rear stone cuffs- Black grille surround w/black "bar style" insert
- Black pwr side mirrors- Cargo lamp integrated w/high mount stop light
- Fixed rear window
- Full-size spare tire w/lock, under frame winch-type carrier, safety catch
- Painted argent front bumper w/black lower valance & upper fascia- Rear solar tint glass
- Removable tailgate w/key lock & lift assist - Variable speed intermittent wipers

## Safety

- 60/40 flip-up rear split bench seat - Front pwr point- Pwr door locks w/autolock feature
- Rear pwr point
- Remote keyless entry w/integrated key transmitter, illuminated entry & panic button
- Vinyl 40/20/40 split bench front seat - 2nd row B-pillar grab handles
- Black ring w/black vanes air conditioning registers - Black urethane steering wheel
- Black vinyl floor covering (N/A w/47R Floor Mats)
- Deployable cupholder under middle seat
- Display center -inc: warning messages & text functions
- Driver & front passenger door scuff plates - Fade-to-off interior lighting- Front map lights
- Front passenger side A-pillar grab handle
- Gauges -inc: fuel gauge, voltmeter, oil pressure, engine coolant temp, speedometer, tachometer, odometer
- Instrument panel mounted cigar lighter- Manual air conditioning
- Overhead console w/(2) storage bins- Perimeter alarm
- Pwr 1st & 2nd row windows w/driver 1-touch down- Rear door cupholders
- SecurLock anti-theft ignition (PATS)- Sunvisors w/driver side strap, passenger mirror
- Tilt steering column

## Mechanical

- 3.7L V6 FFV engine- 6-speed electronic automatic transmission w/OD & tow/haul mode
- (4) pickup box tie-down hooks- 2-ton jack- 3.73 axle ratio (REQ: 99M Engine)
- 5.5' pickup box- 6800# GVWR, 1620# maximum payload
- 78-amp/hr (750CCA) maintenance-free battery- Easy Fuel capless fuel filler system
- Gas shock absorbers- Leaf spring rear suspension w/2-stage variable rear springs
- Long-spindle double wishbone front suspension w/coil-over-shock IFS
- Pwr front/rear disc brakes- Pwr rack & pinion steering- Rear wheel drive
- Trailer sway control

# Option Packages

## Factory Installed Packages

3.5L V6 ECOBOOST ENGINE	\$2,095
Option Packages Total	\$2,095

Nationwide Auto Sales

Nationwide Auto Sales

View this car on our website at [nasauto.com/6288795](https://www.nasauto.com/6288795)

Website: [nasauto.com](http://nasauto.com)

Phone: [985-234-9946](tel:985-234-9946)

Map: [1249 N. Collins Blvd., Covington, Louisiana 70433](#)

