

1996 Chevrolet Impala SS

View this car on our website at carbuffs.com/6278290/ebrochure



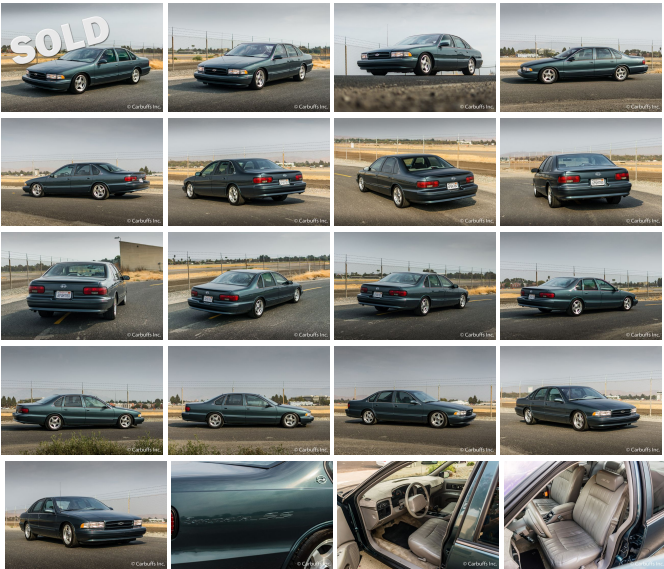
Our Price **\$0**

Specifications:

Year:	1996
VIN:	1g1bl52p8tr193398
Make:	Chevrolet
Model/Trim:	Impala SS
Condition:	Pre-Owned
Body:	Sedan
Exterior:	Dark Green-Gray (Met)
Engine:	5.7L (350) SFI V8 ENGINE
Interior:	Gray Leather
Transmission:	Automatic
Mileage:	95,000
Drivetrain:	Rear Wheel Drive
Economy:	City 17 / Highway 26

Coming soon! Senior owned! One of the best luxury sedans ever produced! In the rarest color of the 3 colors available, dark green-gray metallic with gray leather interior. Smooth and poerful 5.7L LT1 engine with automatic transmission. Factory stereo upgraded with 2 hidden subwoofers and amplifier. Smog legal headers with new Flowmaster mufflers. Factory 17" alloy wheels. Clean title and carfax report. Runs and drives excellent.

Please call for business hours and vehicle availability as not all vehicles are on site at the dealership.



Our Location :



1996 Chevrolet Impala SS

Carbuffs - (925) 671-2010 - View this car on our website at carbuffs.com/6278290/ebrochure

Installed Options

Interior

- Leather 45/45 split seat-inc: full floor console w/cupholders, adjustable head restraints, dual front seat recliners, seatback pockets
- ETR AM/FM stereo w/cassette, auto tone control-inc: seek-scan, digital clock, theft lock, speed compensated volume, premium front/rear coaxial speakers
- Day/night rearview mirror w/reading lamps- Dual covered visor mirrors
- Front/rear compartment reading lamps- Pwr 6-way driver seat
- Color-keyed front/rear carpeted floor mats
- Scotchgard fabric protector-inc: floor covering & mats
- Tilt steering wheel w/adjustable steering column
- Gauges-inc: trip odometer, voltmeter, oil pressure, tachometer- Oil change monitor
- Low fluid level warning lights- Low oil level warning light- Pwr door locks
- Pwr windows w/driver-side express down- Electronic speed control w/resume speed
- PASS-Key theft deterrent system- Air conditioning-inc: R134A refrigerant
- Rear window defogger- Pwr antenna w/black base- Cigarette lighter- Door map pockets
- Black satin interior finish- Front/rear courtesy lamps- Luggage area cargo net

Exterior

- Base coat/clear coat paint- Rear spoiler- Narrow body-side moldings
- Body-color wheel opening moldings- Body-color rocker moldings
- Front/rear body-color fascias- Black tail lamp moldings- Black key lock cylinder
- Body-color grille- Dual remote electric heated mirrors- Tinted glass
- Rear quarter glass molding- Intermittent windshield wipers
- Body-side & rear deck lid emblems- Body-color door handles
- Galvanized steel corrosion protection on most body panels

Mechanical

- P255/50ZR17 SBR BSW performance tires- 4-wheel anti-lock brake system
- 5.7L (350) SFI V8 engine- 4-speed electronically controlled automatic transmission w/OD
- Brake/transmission shift interlock- 3.08 rear axle ratio- Limited slip differential
- Rear wheel drive- Extra capacity cooling- Transmission oil cooler- DeCarbon gas shocks
- Special ride & handling suspension- Full size spare tire
- 17" x 8.5" aluminum 5-spoke wheels- Pwr steering- Pwr front/rear disc brakes
- 23 gallon fuel tank- Stainless steel exhaust system

Option Packages

Factory Installed Packages

5.7L (350) SFI V8 ENGINE

LEATHER SEAT TRIM

Carbuffs

carbuffs.com

(925) 671-2010

2281-A Via De Mercados

Concord, CA 94520

© 2024 AutoRevo - All rights reserved. - Powered by AutoRevo