



2011 Ford Super Duty F450 DRW CrewCab XL 6.7L Power Stroke Diesel

Sandy Stewart 210-654-7800

Price \$27,995

View this vehicle on our website at 79491a0c-c003-4850-9f4e-ad0331890586.autorevo-powersites.com

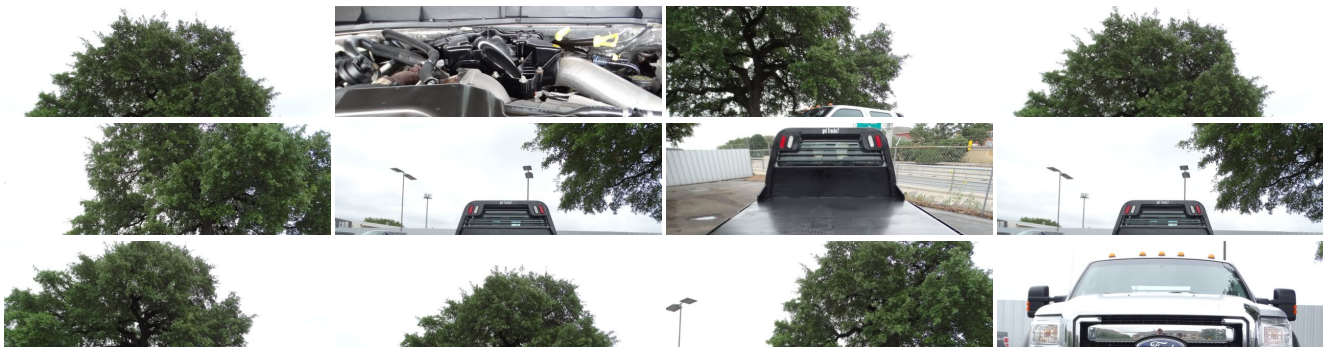
[210-654-7800](tel:210-654-7800)

10750 Iota Dr , San Antonio, Texas 78217

Photos

Details

Contact





Specifications:

Year:	2011
VIN:	1FD0W4GT1BEC87825
Make:	Ford
Stock:	C87825M
Model/Trim:	Super Duty F450 DRW CrewCab XL 6.7L Power Stroke Diesel
Condition:	Pre-Owned
Body:	Pickup Truck
Exterior:	Ingot Silver Metallic
Engine:	6.7L OHV 32-VALVE V8 POWER STROKE DIESEL ENGINE
Interior:	Steel Cloth
Mileage:	95,315
Drivetrain:	Rear Wheel Drive

Vehicle Description

Please call Alma Thomas on this 2011 Ford F450 XL Flatbed 2WD with 6.7L Power Stroke Diesel Engine and Automatic Transmission!

When your needs for a truck require power and performance over heated steering wheel and a lift kit, you know you are a truck buyer that is serious. You turn your attention to bigger trucks than an F350, you are after the bigger rigs like this Ford Super Duty. A clean and odor free interior, power windows, power locks, power mirrors, steering wheel controls, factory trailer brake, auxillary buttons, tow/haul mode, cold a/c and so much more! The flat bed has plenty of storage, the silver exterior for this truck are both in great, solid shape. You are welcome to come out and take a test drive. You will agree that this truck is ready for the job when you are!

A clean and clear Carfax Vehicle History Report is important to you. You can view the entire CARFAX report for free by clicking on the highlighted VIN or the Carfax icon above, you can print it or come on in and we will print you a copy you can take home!

We are proud to offer you competitive financing rates from top rated banks and local credit unions. So whether you live in San Antonio or even out of state, we will work hard for you to make sure your money works smart. Just let your salesperson know that you are interested in financing and be ready to answer a few quick questions, we'll take it from there!

For our complete terms of sale please see our website and if you have questions about this or any of my other items, please give me a call at the office at [210.654.7800](tel:210.654.7800), or on my mobile at [210.392.2835](tel:210.392.2835). You are also welcome to email me at alma@trucksintexas.com. I return all customer phone calls promptly, and will be happy to help you throughout your purchasing process. Thank you, and I look forward to speaking with you!

Installed Options

Interior

- Auxiliary pwr point
- Color-coordinated instrument panel -inc: glove box, (4) air registers w/positive shutoff, pwr point & (4) upfitter switches
- HD vinyl 40/20/40 split bench seat -inc: center armrest, cup holder, storage
- Manual air conditioning- 11.5" day/night rearview mirror- Black vinyl full floor covering
- Black vinyl steering wheel
- Color-coordinated door trim panel -inc: armrest, grab handle, reflector
- Color-coordinated molded cloth headliner- Color-coordinated scuff plates
- Color-coordinated vinyl sun visors -inc: LH pocket, RH insert - Dash-top tray
- Door activated dome lamp w/delay, I/P switch operation
- Dual color-coordinated coat hooks- Dual front grab handles- Front/rear dual map lights
- Front/rear passenger roof ride handles- I/P mounted dual cup holders
- Inside hood release
- Instrumentation -inc: multifunction switch message center w/ice blue lighting
- Manual driver lumbar support- Oil minder system
- Rear 60/40 flip-up/fold-down split bench seat -inc: outboard head restraints, center head restraints
- Secondary glove box- Tilt & telescoping steering wheel/column

Exterior

- 225/70R19.5G BSW tires -inc: (2) front all-season & (4) rear all-season tires
- 19.5" argent painted steel wheels- 3-blink lane change signal- Black door handles
- Black painted grille- Black painted steel front bumper w/grained MIC top cover
- Dual beam jewel headlights- Fixed rear window- Front fender vents
- Front license plate bracket
- Manual telescoping trailer tow mirrors w/manual glass & 2-way fold
- Roof clearance lights- Solar tinted glass- Underhood service light
- Variable intermittent windshield wipers

Safety

- Auxiliary pwr point
- Color-coordinated instrument panel -inc: glove box, (4) air registers w/positive shutoff, pwr point & (4) upfitter switches
- HD vinyl 40/20/40 split bench seat -inc: center armrest, cup holder, storage
- Manual air conditioning- 11.5" day/night rearview mirror- Black vinyl full floor covering
- Black vinyl steering wheel
- Color-coordinated door trim panel -inc: armrest, grab handle, reflector
- Color-coordinated molded cloth headliner- Color-coordinated scuff plates
- Color-coordinated vinyl sun visors -inc: LH pocket, RH insert - Dash-top tray
- Door activated dome lamp w/delay, I/P switch operation
- Dual color-coordinated coat hooks- Dual front grab handles- Front/rear dual map lights
- Front/rear passenger roof ride handles- I/P mounted dual cup holders
- Inside hood release
- Instrumentation -inc: multifunction switch message center w/ice blue lighting
- Manual driver lumbar support- Oil minder system
- Rear 60/40 flip-up/fold-down split bench seat -inc: outboard head restraints, center head restraints
- Secondary glove box- Tilt & telescoping steering wheel/column

Mechanical

- 6.8L SOHC EFI Triton 30-valve V10 engine - Dual rear wheels
- TorqShift 5-speed automatic transmission w/OD -inc: tow/haul mode (REQ: 99Y Engine)
- (2) front tow hooks- (40) gallon aft-axle fuel tank- 155-amp HD alternator
- 200" wheelbase- 4.88 axle ratio (REQ: 99Y Engine)
- 7-wire trailer tow harness w/relays, blunt cut & labeled- 78 amp/hr 750 CCA battery
- Front/rear stabilizer bars- HD gas shock absorbers
- Mono-beam front axle w/coil spring suspension- Pwr 4-wheel disc brakes w/hydro boost
- Pwr steering w/steering damper- Rear auxiliary springs- Rear wheel drive
- Stationary elevated idle control (SEIC)

Option Packages

Factory Installed Packages

6.7L OHV 32-VALVE V8 POWER STROKE DIESEL ENGINE	
-inc: 200-amp HD alternator, dual 78 amp/hr 750 CCA batteries, Intelligent Oil Life Minder, diesel exhaust fuel tank, split-shaft calibration compatibility	\$7,485

Option Packages Total	\$7,485
-----------------------	---------

Please understand, we do our very best to describe in detail the condition of our vehicles, however, we are only human and these are used vehicles, therefore, American Auto Brokers, and their employees or agents will not be held accountable for errors or omissions in the description of the above vehicle or typographical errors in any of our vehicle listings. AMERICAN AUTO BROKERS MAKES EVERY EFFORT TO BE AS TRANSPARENT AS POSSIBLE WHEN OFFERING INFORMATION ABOUT THE INVENTORY ON

OUR SITE. WE WILL DISCLOSE WHAT WE KNOW AND WHAT WE HAVE LEARNED REGARDING EACH VEHICLE, WHETHER IT IS PAINTWORK, PERFORMANCE ENHANCING EQUIPMENT OR ALTERED EXHAUST / EMISSIONS. WE DO NOT INSTALL ANY OF THIS TYPE OF EQUIPMENT, NOR DO WE TEST ITS PERFORMANCE. IT IS STRONGLY ENCOURAGED THAT YOU HAVE AN INDEPENDENT PRE-BUYER'S INSPECTION DONE. WE DO NOT REQUIRE YOU TO HAVE ONE DONE, HOWEVER WE WILL NOT BE HELD RESPONSIBLE FOR ANY FINDINGS AFTERWARDS SHOULD YOU CHOOSE TO DISCARD YOUR RIGHT TO HAVE ONE DONE. All vehicle options (power opts, cd players/changers, audio equipment, entertainment systems/dvd, navigation systems/nav dvd, etc), specs, features, color descriptions, history, paint history, maintenance records and manufacturer's warranty information should be researched and confirmed by the buyer or third party service before completing purchase. Helpful research information can be found at Edmunds.com, AutoCheck.com, Carhex.com, CarFax.com, etc. At our dealership we work very hard to accurately describe our vehicles through text descriptions and elaborate photos. We hand select each vehicle we put on eBay. The vehicle shown is ALWAYS the vehicle being sold. Please look over the photos carefully as they are part of the description. When you purchase any pre-owned vehicle it is not a new vehicle. Any pre-owned vehicle can/will have normal wear, which may include, but not limited to, rock chips, scratches, scuffs, and minor interior wear, our policy is to disclose anything beyond that and we encourage pre-purchase inspections. When fresh inventory arrives, we do our best to inspect all power options, DVD systems, audio equipment, NAV systems, etc., however AAB will not be held liable or responsible for any of these items. ALL LIFTED AND FLAT BED UTILITY BED TRUCKS MAY OR MAY NOT HAVE SPARES. We will search and disclose paintwork. However, please bear in mind that this is an imperfect science. Also, you must note that often truck owners may choose to alter factory emissions and or exhaust to enhance performance or fuel economy. We often do acquire trucks that have these performance enhancing equipment already installed. This equipment may alter original emissions equipment or void factory warranties. We do not test or alter this equipment. If this is a concern of yours, please exercise your right to have a pre-purchase inspection prior to leaving your deposit. Our sales staff is available to assist in answering any specific cosmetic questions and will gladly walk around a vehicle to give you a more accurate description BEFORE a deposit is left. Ultimately, it is up to the potential buyer to do their due diligence. American Auto Brokers does not want to hide anything and we encourage everyone to have a pre-buyer's inspection done before purchase. Please be aware that until a holding fee or down payment has been made after the completion of the inspection, the vehicle is still available for purchase to the public and will not be held. Note: Our listing software provider allows the VIN to decode the ORIGINAL FACTORY EQUIPMENT that this vehicle had when it rolled off the factory line. There may/may not be additional dealer equipment that was added by the original selling dealer that will not be listed in this section. There may/may not also have items listed as original factory equipment that are no longer with the vehicle we are currently selling. For example: 2 sets of keys, keyless entry remotes, owner's manual, factory floor mats, Navigation discs, first aid kits, factory tires/size/load rating, spare tires/factory tools and/or jacks, etc. Please refer to the photos we have taken or ask us your specific concern to be certain there is no confusion. We will not be responsible for any discrepancies between the Original Factory Equipment section and what is presented in the photos or description. Please do not assume and allow us to put our answers to your specific concerns in writing. Human error is possible and we reserve the right to reverse any sale based on pricing/listing error which can occur at any time without notice. All inventory is listed for sale locally, therefore all are subject to sale at any time and may not be available. Everyone is encouraged to call with questions or concerns. "Note to other Dealers and Brokers due to the pricing we reserve the right to only sell to the retail public. We will NOT sell to other dealers, we appreciate your desire to buy from us but please no not call to check if we will."

American Auto Brokers

American Auto Brokers

View this car on our website at 79491a0c-c003-4850-9f4e-ad0331890586.autorevo-powersites.com/6198917

Website: 79491a0c-c003-4850-9f4e-ad0331890586.autorevo-powersites.com

Phone: 210-654-7800

Map: 10750 Iota Dr, San Antonio, Texas 78217

