



2014 Chevrolet Silverado 3500HD Crew Cab Flatbed WT

Jimmy Degollado 956-423-3434

Our Price \$23,995

View this vehicle on our website at elliffmotors.com

Elliff Motors

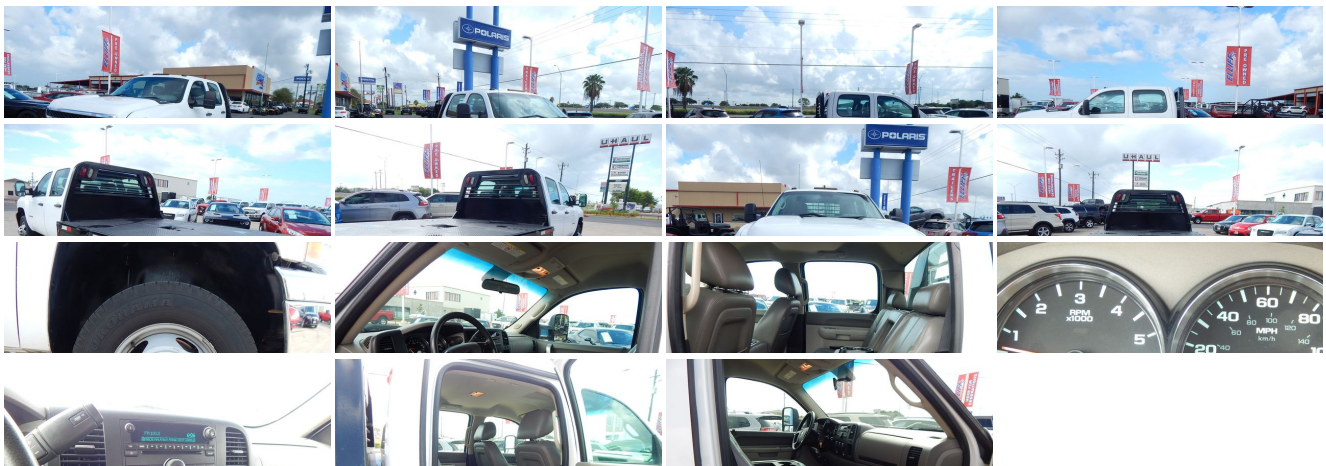
[956-423-3434](tel:956-423-3434)

1307 West Harrison Avenue , Harlingen, TX 78550

Photos

Details

Contact



Specifications:

| | |
|--------------------|--|
| Year: | 2014 |
| VIN: | 1GB4CZCG6EF152329 |
| Make: | Chevrolet |
| Stock: | 34792A |
| Model/Trim: | Silverado 3500HD Crew Cab Flatbed WT |
| Condition: | Pre-Owned |
| Body: | Pickup Truck |
| Exterior: | Summit White |
| Engine: | ENGINE, VORTEC 6.0L VARIABLE VALVE TIMING V8 SFI |
| Interior: | Gray Vinyl |
| Mileage: | 85,159 |
| Drivetrain: | Rear Wheel Drive |

Vehicle Description

Installed Options

Interior

- Door locks, power includes Remote Keyless Entry (Standard on Crew Cab models. Includes Remote Keyless Entry unless SEO (5B5) power windows, locks and mirrors is ordered.)
- Power outlets, 2 auxiliary instrument panel-mounted with covers, 12-volt
- Remote Keyless Entry, with 2 transmitters and panic button Optional on all models when SEO (5B5) power windows, locks and mirrors is ordered (Standard on Crew Cab models. Included and only available with (AU3) power door locks or (PCM) Work Truck Preferred Package.) (Requires SEO (5B5) power windows, locks and mirrors.)
- Seat trim, Vinyl
- Seats, front 40/20/40 split-bench 3-passenger, driver and front passenger manual reclining with outboard head restraints and center fold-down armrest with storage
- Air conditioning, single-zone manual climate control- Assist handle, front passenger
- Coat hooks, rear driver and passenger side
- Cruise control electronic with set and resume speed, located on steering wheel
- Cup holders, front
- Driver Information Center with odometer, trip odometer and message center (monitors numerous systems depending on vehicle equipment level including low fuel, turn signal "on", transmission temperature and oil change notification) (Driver Information Center controls are operated through the trip button unless (UK3) steering wheel mounted audio controls is ordered. On 1LT includes 8-point compass and outside temperature.)
- Floor covering, Black rubberized-vinyl
- Instrumentation, analog with speedometer, fuel level, engine temperature, tachometer, voltmeter and oil pressure indicators
- Lighting, interior with dome and reading lights, backlit instrument panel switches and door handle-activated illuminated entry
- Mirror, inside rearview manual day/night
- Seat, rear 60/40 folding bench (folds up), 3-passenger, (includes child seat top tether anchor) (Crew Cab models only.)
- Steering column, Tilt-Wheel adjustable with brake/transmission shift interlock
- Steering wheel, includes theft-deterrent locking feature
- Visors, driver and front passenger sliding, with clip and passenger side vanity mirror with cover, Opal Gray-colored
- Warning tones headlamp on, key-in-ignition, driver and passenger buckle up reminder and turn signal on

Exterior

- Tires, LT235/80R17E all-season highway, blackwall- Bumper, front chrome
- Door handles, Black- Glass, Solar-Ray light-tinted all windows- Grille, chrome surround
- Headlamps, dual halogen composite with automatic exterior lamp control and flash-to-pass feature
- Lamps, Smoked Amber roof marker
- Mirrors, outside high-visibility vertical camper-style, Black with manual folding and extension and lower convex spotter glass
- Wheels, 17" (43.2 cm) painted steel
- Wipers, front intermittent wet-arm with pulse washers

Option Packages

Factory Installed Packages

ENGINE, VORTEC 6.0L VARIABLE VALVE TIMING V8 SFI
(322 hp [240.1 kW] @ 4400 rpm, 380 lb-ft of
torque [513.0 N-m] @ 4200 rpm)

Safety

- Door locks, power includes Remote Keyless Entry (Standard on Crew Cab models. Includes Remote Keyless Entry unless SEO (5B5) power windows, locks and mirrors is ordered.)
- Power outlets, 2 auxiliary instrument panel-mounted with covers, 12-volt
- Remote Keyless Entry, with 2 transmitters and panic button Optional on all models when SEO (5B5) power windows, locks and mirrors is ordered (Standard on Crew Cab models. Included and only available with (AU3) power door locks or (PCM) Work Truck Preferred Package.) (Requires SEO (5B5) power windows, locks and mirrors.)
- Seat trim, Vinyl
- Seats, front 40/20/40 split-bench 3-passenger, driver and front passenger manual reclining with outboard head restraints and center fold-down armrest with storage
- Air conditioning, single-zone manual climate control- Assist handle, front passenger
- Coat hooks, rear driver and passenger side
- Cruise control electronic with set and resume speed, located on steering wheel
- Cup holders, front
- Driver Information Center with odometer, trip odometer and message center (monitors numerous systems depending on vehicle equipment level including low fuel, turn signal "on", transmission temperature and oil change notification) (Driver Information Center controls are operated through the trip button unless (UK3) steering wheel mounted audio controls is ordered. On 1LT includes 8-point compass and outside temperature.)
- Floor covering, Black rubberized-vinyl
- Instrumentation, analog with speedometer, fuel level, engine temperature, tachometer, voltmeter and oil pressure indicators
- Lighting, interior with dome and reading lights, backlit instrument panel switches and door handle-activated illuminated entry
- Mirror, inside rearview manual day/night
- Seat, rear 60/40 folding bench (folds up), 3-passenger, (includes child seat top tether anchor) (Crew Cab models only.)
- Steering column, Tilt-Wheel adjustable with brake/transmission shift interlock
- Steering wheel, includes theft-deterrent locking feature
- Visors, driver and front passenger sliding, with clip and passenger side vanity mirror with cover, Opal Gray-colored
- Warning tones headlamp on, key-in-ignition, driver and passenger buckle up reminder and turn signal on

Mechanical

- Transmission, 6-speed automatic, heavy-duty electronically controlled with overdrive and tow/haul mode. Includes Cruise Grade Braking and Powertrain Grade Braking (Requires (L96) Vortec 6.0L V8 SFI engine.)
- Air cleaner, high-capacity- Alternator, 125 amps
- Battery, heavy-duty 600 cold-cranking amps maintenance-free with rundown protection and retained accessory power (Not standard with (LML) Duramax 6.6L Turbo Diesel V8 engine.)
- Body, Chassis Cab includes (VF7) bumper delete, (9L3) spare tire delete and (5Z4) spare tire carrier delete
- Cooling, auxiliary external transmission oil cooler heavy-duty air-to-oil
- Cooling, external engine oil cooler heavy-duty air-to-oil, integral to driver-side of radiator tank
- Engine, Vortec 6.0L Variable Valve Timing V8 SFI (322 hp [240.1 kW] @ 4400 rpm, 380 lb-ft of torque [513.0 N-m] @ 4200 rpm)
- Exhaust, aluminized stainless-steel muffler and tailpipe
- Frame, fully-boxed, hydroformed front section- Frame, reinforced C-channel
- Fuel tank, front and rear, 63.5 gallon (240 liters) - GVWR, 13,200 lbs. (5988 kg)
- Rear axle, 4.10 ratio (Requires (L96) Vortec 6.0L V8 SFI engine.) - Rear wheel drive
- Recovery hooks, front, frame-mounted- Steering, power, recirculating ball
- Suspension Package, Handling/Trailer, heavy-duty includes 46 mm piston monotube shocks and 34mm front stabilizer bar
- Suspension, front independent, torsion bar- Suspension, rear 7+1 multi-leaf springs

Elliff Motors

Elliff Motors

View this car on our website at elliffmotors.com/6172359

Website: elliffmotors.com

Phone: 956-423-3434

Map: [1307 West Harrison Avenue, Harlingen, TX 78550](#)

