



2008 FORD F350 SUPER DUTY

Our Price \$14,995

View this vehicle on our website at regalpreownedautos.com

REGAL PREOWNED AUTOS

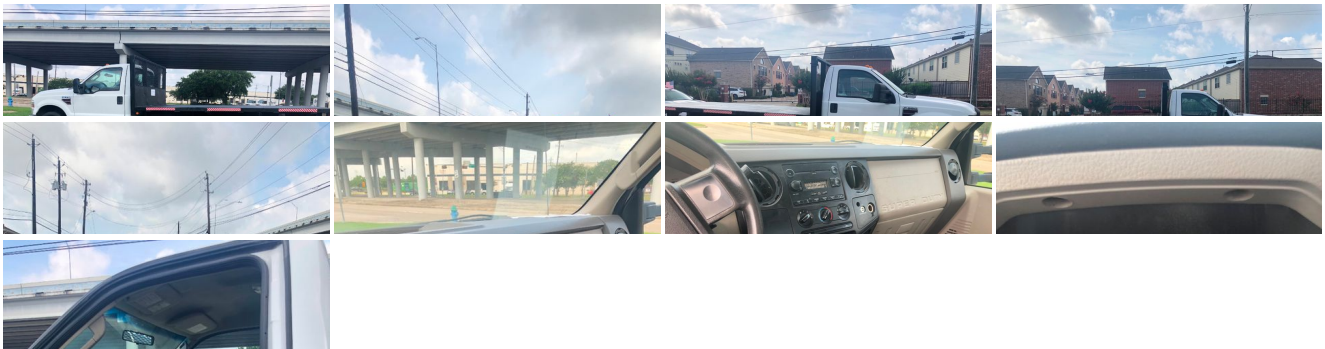
713-661-5536

11321 Main St, Houston, Texas 77025

Photos

Details

Contact



Specifications:

Year:	2008
VIN:	1FDWF36R68ED13466

Make:	FORD
Stock:	000194
Model/Trim:	F350 SUPER DUTY
Condition:	Pre-Owned
Exterior:	WHITE
Mileage:	122,798
Drivetrain:	Rear Wheel Drive

Vehicle Description

Installed Options	Option Packages
<div>Interior<div><ul style="list-style-type: none">- AM/FM stereo-inc: digital clock, (2) speakers- Accessory delay- Air conditioning-inc: black vents w/chrome rings - Auxiliary pwr point- Black vinyl full floor covering- Color-coordinated carpet full floor covering w/carpeted floor mats- Color-coordinated door trim panel-inc: armrest, grab handle, reflector- Color-coordinated door trim panel-inc: soft armrest, grab handle, reflector, molded upper applique, upper & lower map pockets- Cruise control- HD vinyl reclining bench seat- High series cloth 40/20/40 split bench seat-inc: center armrest, storage, cup holders, driver manual lumbar support- Premium AM/FM stereo w/CD/MP3 player-inc: aux input jack, digital clock, (4) speakers- Pwr door locks w/backlit switches- Pwr windows-inc: driver side one-touch down feature, backlit switches- Tilt steering wheel w/cruise controls- Underhood service light- 11.5" day/night rearview mirror- Black instrument cluster w/black gauges & white graphics - Black vinyl steering wheel- Color-coordinated cloth sun visors-inc: LH pocket, RH mirror insert- Color-coordinated instrument panel w/glove box, (4) air registers w/positive shutoff, ashtray & cigar lighter & (4) upfitter switches- Color-coordinated molded cloth headliner- Color-coordinated scuff plates- Dash-top tray- Door activated dome lamp w/delay, I/P switch operation- Dual color-coordinated coat hooks- Dual front grab handles- Dual map lights- Front passenger roof ride handles- Inside hood release- Instrumentation-inc: tachometer, voltmeter, oil pressure, coolant temp, fuel gauges, indicator lights, message center w/odometer & trip meter, engine hour meter, warning messages</div></div> <div>Exterior<div><ul style="list-style-type: none">- Black painted grille- Black painted steel front bumper w/grained MIC top cover- Chrome grille surround w/medium platinum insert- Chrome steel front bumper w/grained MIC top cover - Dual beam jewel effect headlights- Manual telescoping trailer tow mirrors w/manual glass & 2-way fold- Manual telescoping trailer tow mirrors w/pwr heated glass, integrated clearance lights & turn signals & 2-way fold- Sealed beam halogen headlights- Black door handles- Front fender vents- Roof clearance lights- Solar tinted glass- Variable intermittent windshield wipers</div></div> <div>Safety<div><ul style="list-style-type: none">- AM/FM stereo-inc: digital clock, (2) speakers- Accessory delay- Air conditioning-inc: black vents w/chrome rings - Auxiliary pwr point- Black vinyl full floor covering- Color-coordinated carpet full floor covering w/carpeted floor mats- Color-coordinated door trim panel-inc: armrest, grab handle, reflector- Color-coordinated door trim panel-inc: soft armrest, grab handle, reflector, molded upper applique, upper & lower map pockets- Cruise control- HD vinyl reclining bench seat- High series cloth 40/20/40 split bench seat-inc: center armrest, storage, cup holders, driver manual lumbar support- Premium AM/FM stereo w/CD/MP3 player-inc: aux input jack, digital clock, (4) speakers- Pwr door locks w/backlit switches- Pwr windows-inc: driver side one-touch down feature, backlit switches- Tilt steering wheel w/cruise controls- Underhood service light- 11.5" day/night rearview mirror</div></div>	<div>Factory Installed Packages<div><div>6.4L OHV V8 POWER STROKE DIESEL ENGINE</div><div><div>-inc: 135-amp HD alternator, dual 78 amp/hr 750 CCA battery, hydro boost brakes, I/P air filter minder, turbo boost gauge</div><div>\$6,545</div></div></div></div> <div><div>Option Packages Total</div><div>\$6,545</div></div>

- 11.3 day/night rearview mirror
- Black instrument cluster w/black gauges & white graphics - Black vinyl steering wheel
- Color-coordinated cloth sun visors-inc: LH pocket, RH mirror insert
- Color-coordinated instrument panel w/glove box, (4) air registers w/positive shutoff, ashtray & cigar lighter & (4) upfitter switches
- Color-coordinated molded cloth headliner- Color-coordinated scuff plates- Dash-top tray
- Door activated dome lamp w/delay, I/P switch operation
- Dual color-coordinated coat hooks- Dual front grab handles- Dual map lights
- Front passenger roof ride handles- Inside hood release
- Instrumentation-inc: tachometer, voltmeter, oil pressure, coolant temp, fuel gauges, indicator lights, message center w/odometer & trip meter, engine hour meter, warning messages

Mechanical

- 141" wheelbase- 165" wheelbase
- 6-speed manual transmission w/OD-inc: PTO provision
- 6.8L 30-valve SOHC EFI Triton V10 engine - Dual rear wheels
- LT245/75R17E all-season BSW tires
- Pwr 4-wheel anti-lock disc brakes w/vacuum boost- (2) front tow hooks
- 115-amp HD alternator- 17" x 6.5" argent painted steel wheels - 4.10 axle ratio
- 7-wire trailer tow harness w/relays, blunt cut & labeled- 78 amp/hr battery
- Engine block heater *STD in AK, CO, IA, ID, ME, MI, MN, MT, ND, NH, NY, SD, VT, WI, WY*
- Front/rear stabilizer bar- HD gas shock absorbers - Pwr steering w/steering damper
- Rear auxiliary springs- Rear wheel drive- Stationary elevated idle control (SEIC)
- Twin I-beam front axle w/coil spring suspension

Regal Pre-owned Autos

Regal Pre-owned Autos

View this car on our website at regalpreownedautos.com/6168302

Website: regalpreownedautos.com

Phone: [713-661-5536](tel:713-661-5536)

Map: [11321 Main St, Houston, Texas 77025](#)



