

2006 Honda Element EX-P

View this car on our website at carbuffs.com/6146455/ebrochure

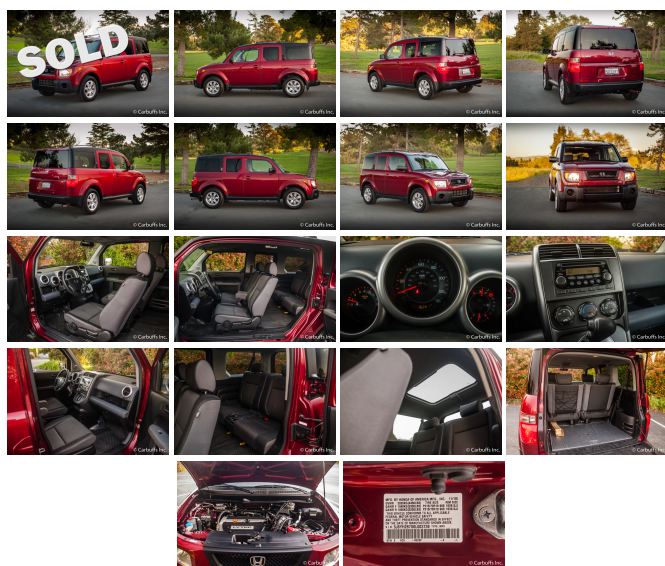


Our Price **\$0**

Specifications:

Year:	2006
VIN:	5J6YH287X6L003739
Make:	Honda
Model/Trim:	Element EX-P
Condition:	Pre-Owned
Body:	SUV
Exterior:	Tango Red Pearl
Engine:	2.4L DOHC MPFI 16-valve i-VTEC I4 engine
Interior:	Black/Gray Cloth
Transmission:	4-speed automatic transmission w/OD
Mileage:	162,000
Drivetrain:	All Wheel Drive
Economy:	City 21 / Highway 24

Tango red pearl exterior with black/gray interior. Reliable 2.4L 4 cyl engine with automatic transmission. Factory AM/FM/CD stereo with auxiliary input. All wheel drive. California car. 162k miles. Runs and drives excellent. Clean title and Carfax report.



2006 Honda Element EX-P

Carbuffs - (925) 671-2010 - View this car on our website at carbuffs.com/6146455/ebrochure

Our Location :



2006 Honda Element EX-P

Carbuffs - (925) 671-2010 - View this car on our website at carbuffs.com/6146455/ebrochure

Installed Options

Interior

- (3) front/(2) rear cup holders
- AM/FM stereo w/CD player-inc: (7) speakers, subwoofer, 270-watt amp, aux media input jack
- Adjustable headrests & flat-folding seats at all seating positions
- Adjustable steering column- Air conditioning w/air-filtration system
- Cargo area-inc: light, storage bins, (4) tie-downs, (2) hooks
- Color-keyed instrument panel gauges-inc: tachometer, digital odometer, (2) digital trip meters, coolant temp
- Cruise control- Door pocket storage bins- Driver armrest- Dual visor vanity mirrors
- FXC waterproof seating surfaces- Front passenger side seatback pocket
- Front/rear 12V pwr outlets- Front/rear driver-side seatback bungee loops
- Indicator lights-inc: door/tailgate open, low-fuel, low-oil pressure, maintenance interval
- Instrument panel-mounted shifter- Lockable glove box
- Metallic-look urethane coated utility floor- Overhead storage compartment w/map lights
- Pwr door/tailgate locks- Pwr windows w/auto-up/down driver window
- Rear seat heater ducts- Rear window defroster
- Reclining front bucket seats w/driver seat manual height adjustment
- Remote keyless entry- Removable 50/50 split rear seats w/flip-up feature
- Roof-mounted antenna- Sliding sunvisor extensions

Exterior

- 2-speed/intermittent windshield wipers- Body-colored composite body panels
- Clamshell tailgate- Green heat-rejecting glass- Intermittent rear window wiper w/washer
- Multi-reflector halogen headlights- Pwr mirrors- Rear privacy glass
- Removable rear sunroof w/tilt

Safety

- (3) front/(2) rear cup holders
- AM/FM stereo w/CD player-inc: (7) speakers, subwoofer, 270-watt amp, aux media input jack
- Adjustable headrests & flat-folding seats at all seating positions
- Adjustable steering column- Air conditioning w/air-filtration system
- Cargo area-inc: light, storage bins, (4) tie-downs, (2) hooks
- Color-keyed instrument panel gauges-inc: tachometer, digital odometer, (2) digital trip meters, coolant temp
- Cruise control- Door pocket storage bins- Driver armrest- Dual visor vanity mirrors
- FXC waterproof seating surfaces- Front passenger side seatback pocket
- Front/rear 12V pwr outlets- Front/rear driver-side seatback bungee loops
- Indicator lights-inc: door/tailgate open, low-fuel, low-oil pressure, maintenance interval
- Instrument panel-mounted shifter- Lockable glove box
- Metallic-look urethane coated utility floor- Overhead storage compartment w/map lights
- Pwr door/tailgate locks- Pwr windows w/auto-up/down driver window
- Rear seat heater ducts- Rear window defroster
- Reclining front bucket seats w/driver seat manual height adjustment
- Remote keyless entry- Removable 50/50 split rear seats w/flip-up feature
- Roof-mounted antenna- Sliding sunvisor extensions

Mechanical

- 15.9 gallon fuel tank- 16" alloy wheels- 2.4L DOHC MPFI 16-valve i-VTEC I4 engine
- 4-speed automatic transmission w/OD
- 4-wheel anti-lock braking system (ABS) w/electronic brake distribution (EBD)
- Compact double wishbone rear suspension w/stabilizer bar
- Control-link MacPherson strut front suspension w/stabilizer bar
- Electronic ignition w/immobilizer- P215/70R16 all-season tires
- Pwr ventilated front/solid rear disc brakes- Real-time 4-wheel drive
- Variable-assist pwr rack-and-pinion steering

Option Packages

Factory Installed Packages

16" ALLOY WHEELS	\$219
TABLE LET KIT	\$66
Option Packages Total	\$285

(925) 671-2010

2281-A Via De Mercados

Concord, CA 94520

© 2024 AutoRevo - All rights reserved. - Powered by AutoRevo