

2003 Honda Element EX

View this car on our website at carbuffs.com/6084577/ebrochure

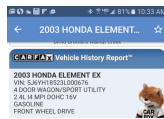
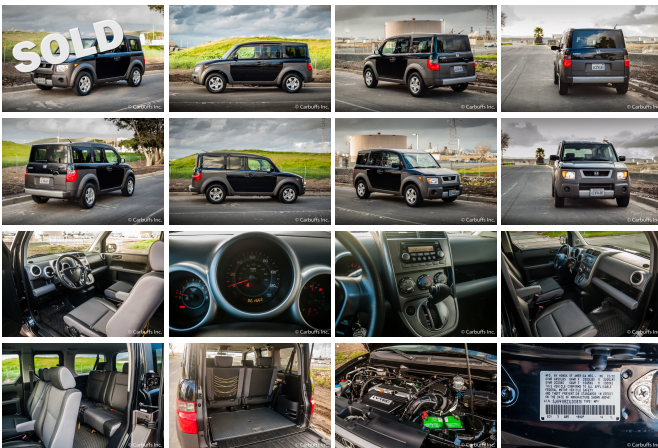


Our Price **\$0**

Specifications:

Year:	2003
VIN:	5j6yh185231000676
Make:	Honda
Model/Trim:	Element EX
Condition:	Pre-Owned
Body:	SUV
Exterior:	Nighthawk Black Pearl
Engine:	2.4L DOHC MPFI i-VTEC 16-valve I4 engine
Interior:	Gray/Blue Cloth
Transmission:	Automatic
Mileage:	61,700
Drivetrain:	Front Wheel Drive
Economy:	City 22 / Highway 26

Low mile Element! Nighthawk black pearl exterior with gray cloth interior. Reliable and efficient 2.4L 4 cyl engine with automatic transmission. Power windows and locks. Only 61k miles. Runs and drives great. Clean title and Carfax report.



2003 Honda Element EX
Carbuffs - (925) 671-2010 - View this car on our website at carbuffs.com/6084577/ebrochure

Our Location :



2003 Honda Element EX
Carbuffs - (925) 671-2010 - View this car on our website at carbuffs.com/6084577/ebrochure

Installed Options

Interior

- 270-watt AM/FM stereo w/CD player-inc: (7) speakers, subwoofer, mp3/digital media auxiliary jack
- Pwr door/tailgate locks- (3) front/(2) rear cup holders- Adjustable steering column
- Air conditioning w/air filtration system
- Cargo area-inc: light, storage bins, (4) tie-downs, (2) hooks
- Color-keyed instrument panel gauges-inc: tachometer, digital odometer, (2) digital trip meters, coolant temp
- Cruise control- Door pocket storage bins- Driver seat armrest
- FXC waterproof seating surfaces- Front passenger-side seatback pocket
- Front/rear 12-volt accessory outlets- Front/rear driver-side seatback bungee loops
- Indicator lights-inc: door/tailgate open, low fuel, low oil pressure, maintenance interval
- Instrument panel-mounted shifter- Lockable glove compartment
- Low-profile floor console tray- Metallic-look urethane coated utility floor
- Overhead storage compartment w/map lights
- Pwr windows w/auto-up/down driver window- Rear seat heater ducts
- Rear window defroster
- Reclining front bucket seats w/driver seat manual height adjustment
- Removable 50/50 split rear seats w/flip-up feature
- Removable headrests & flat folding seats at all seating positions - Roof-mounted antenna
- Sliding sunvisor extensions- Visor vanity mirrors

Exterior

- 2-speed/intermittent windshield wipers- Clamshell tailgate- Dual pwr mirrors
- Intermittent rear window wiper w/washer- Metallic-look composite body panels
- Multi-reflector halogen headlights- Rear privacy glass- Swing-wide side cargo doors

Safety

- 270-watt AM/FM stereo w/CD player-inc: (7) speakers, subwoofer, mp3/digital media auxiliary jack
- Pwr door/tailgate locks- (3) front/(2) rear cup holders- Adjustable steering column
- Air conditioning w/air filtration system
- Cargo area-inc: light, storage bins, (4) tie-downs, (2) hooks
- Color-keyed instrument panel gauges-inc: tachometer, digital odometer, (2) digital trip meters, coolant temp
- Cruise control- Door pocket storage bins- Driver seat armrest
- FXC waterproof seating surfaces- Front passenger-side seatback pocket
- Front/rear 12-volt accessory outlets- Front/rear driver-side seatback bungee loops
- Indicator lights-inc: door/tailgate open, low fuel, low oil pressure, maintenance interval
- Instrument panel-mounted shifter- Lockable glove compartment
- Low-profile floor console tray- Metallic-look urethane coated utility floor
- Overhead storage compartment w/map lights
- Pwr windows w/auto-up/down driver window- Rear seat heater ducts
- Rear window defroster
- Reclining front bucket seats w/driver seat manual height adjustment
- Removable 50/50 split rear seats w/flip-up feature
- Removable headrests & flat folding seats at all seating positions - Roof-mounted antenna
- Sliding sunvisor extensions- Visor vanity mirrors

Mechanical

- 4-wheel Anti-lock Braking System (ABS) w/Electronic Brake Distribution (EBD)
- 15.9 gallon fuel tank- 16" x 6.5" alloy wheels
- 2.4L DOHC MPFI i-VTEC 16-valve I4 engine - 4-speed automatic transmission w/OD
- Compact double wishbone rear suspension w/stabilizer bar
- Control-link MacPherson strut front suspension w/stabilizer bar
- Electronic ignition w/immobilizer- Front wheel drive- P215/70SR16 all-season tires
- Pwr ventilated front/solid rear disc brakes- Variable-assist pwr rack-and-pinion steering

Option Packages

Factory Installed Packages

16" ALLOY WHEELS	\$219
STANDARD PAINT	
Option Packages Total	\$219

(925) 671-2010

2281-A Via De Mercados

Concord, CA 94520

© 2024 AutoRevo - All rights reserved. - Powered by AutoRevo