

2015 Volkswagen Jetta 1.8T SE

View this car on our website at carbuffs.com/6052087/ebrochure

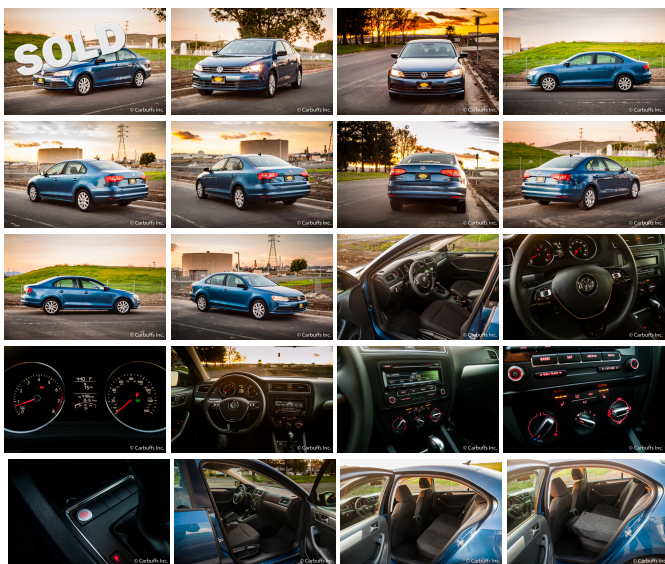


Our Price **\$0**

Specifications:

Year:	2015
VIN:	3VWD17AJ0FM286112
Make:	Volkswagen
Model/Trim:	Jetta 1.8T SE
Condition:	Pre-Owned
Body:	Sedan
Exterior:	Silk Blue Metallic
Engine:	Engine: 1.8L I-4 DOHC Turbocharged -inc: direct injection
Interior:	Titan Black Cloth
Transmission:	Automatic
Mileage:	36,161
Drivetrain:	Front Wheel Drive
Economy:	City 24 / Highway 34

Excellent color combination of silk blue metallic exterior with titan black cloth interior. Efficient 1.8L Turbocharged 4 cyl engine with automatic transmission. AM/FM/CD/SiriusXM factory stereo with steering wheel controls. Purchase includes a 3 month trial SiriusXM subscription. Power windows and locks. Keyless entry with keyless push button start. Heavy duty floor mats and trunk mat. First aid kit. Connectivity package. Heated front seats. Split fold-down rear seats. Recent tires. 36k miles. Runs and drives excellent. Clean title and Carfax report. Still under the manufacturers drivetrain warranty. EPA estimated 24 mpg city and 34mpg highway.



Our Location :



2015 Volkswagen Jetta 1.8T SE
Carbuffs - (925) 671-2010 - View this car on our website at carbuffs.com/6052087/ebrochure

Installed Options

Interior

- 1 Seatback Storage Pocket- 2 12V DC Power Outlets
- 6-Way Driver Seat -inc: Manual Recline, Height Adjustment and Fore/Aft Movement
- 6-Way Passenger Seat -inc: Manual Recline, Height Adjustment and Fore/Aft Movement
- 60-40 Folding Bench Front Facing Fold Forward Seatback Rear Seat - Air Filtration
- Analog Display- Cargo Space Lights- Carpet Floor Trim- Cloth Seat Trim
- Cruise Control w/Steering Wheel Controls- Day-Night Rearview Mirror
- Delayed Accessory Power- Driver / Passenger And Rear Door Bins
- Driver And Passenger Visor Vanity Mirrors- Driver Foot Rest- Engine Immobilizer
- FOB Controls -inc: Trunk/Hatch/Tailgate- Fade-To-Off Interior Lighting
- Front And Rear Map Lights- Front Cupholder- Full Carpet Floor Covering
- Full Cloth Headliner
- Full Floor Console w/Covered Storage, Mini Overhead Console w/Storage and 2 12V DC Power Outlets
- Gauges -inc: Speedometer, Odometer, Tachometer, Trip Odometer and Trip Computer
- HVAC -inc: Underseat Ducts- Heated Front Bucket Seats- Illuminated Locking Glove Box
- Interior Trim -inc: Metal-Look Instrument Panel Insert, Metal-Look Door Panel Insert, Chrome And Metal-Look Interior Accents
- Manual Adjustable Front Head Restraints and Manual Adjustable Rear Head Restraints
- Manual Air Conditioning- Manual Tilt/Telescoping Steering Column
- Outside Temp Gauge- Power 1st Row Windows w/Front And Rear 1-Touch Up/Down
- Power Door Locks w/Autolock Feature- Power Fuel Flap Locking Type
- Power Rear Windows- Proximity Key For Push Button Start Only - Rear Cupholder
- Redundant Digital Speedometer
- Remote Keyless Entry w/Integrated Key Transmitter, Illuminated Entry and Panic Button
- Remote Releases -Inc: Power Cargo Access- Seats w/Cloth Back Material
- Sliding Front Center Armrest- Trip Computer- Urethane Gear Shift Knob

Exterior

Option Packages

Factory Installed Packages

FIRST AID KIT	\$35
RUBBER MAT KIT -inc: Monster Mats (set of 4), Heavy Duty Trunk Liner w/CarGo Blocks	\$235
SILK BLUE METALLIC	
TITAN BLACK, CLOTH SEAT TRIM	
Option Packages Total	\$270

- Aero-Composite Halogen Daytime Running Headlamps- Black Door Handles- Black Grille
- Black Power Heated Side Mirrors w/Manual Folding- Black Side Windows Trim
- Body-Colored Front Bumper- Body-Colored Rear Bumper- Clearcoat Paint
- Fixed Rear Window w/Defroster- Front License Plate Bracket
- Full-Size Spare Tire Mounted Inside Under Cargo- Fully Galvanized Steel Panels
- Light Tinted Glass- Steel Spare Wheel- Tires: 16" All-Season- Trunk Rear Cargo Access
- Variable Intermittent Wipers- Wheels w/Silver Accents- Wheels: 16" Alloy

Safety

- 1 Seatback Storage Pocket- 2 12V DC Power Outlets
- 6-Way Driver Seat -inc: Manual Recline, Height Adjustment and Fore/Aft Movement
- 6-Way Passenger Seat -inc: Manual Recline, Height Adjustment and Fore/Aft Movement
- 60-40 Folding Bench Front Facing Fold Forward Seatback Rear Seat - Air Filtration
- Analog Display- Cargo Space Lights- Carpet Floor Trim- Cloth Seat Trim
- Cruise Control w/Steering Wheel Controls- Day-Night Rearview Mirror
- Delayed Accessory Power- Driver / Passenger And Rear Door Bins
- Driver And Passenger Visor Vanity Mirrors- Driver Foot Rest- Engine Immobilizer
- FOB Controls -inc: Trunk/Hatch/Tailgate- Fade-To-Off Interior Lighting
- Front And Rear Map Lights- Front Cupholder- Full Carpet Floor Covering
- Full Cloth Headliner
- Full Floor Console w/Covered Storage, Mini Overhead Console w/Storage and 2 12V DC Power Outlets
- Gauges -inc: Speedometer, Odometer, Tachometer, Trip Odometer and Trip Computer
- HVAC -inc: Underseat Ducts- Heated Front Bucket Seats- Illuminated Locking Glove Box
- Interior Trim -inc: Metal-Look Instrument Panel Insert, Metal-Look Door Panel Insert, Chrome And Metal-Look Interior Accents
- Manual Adjustable Front Head Restraints and Manual Adjustable Rear Head Restraints
- Manual Air Conditioning- Manual Tilt/Telescoping Steering Column
- Outside Temp Gauge- Power 1st Row Windows w/Front And Rear 1-Touch Up/Down
- Power Door Locks w/Autolock Feature- Power Fuel Flap Locking Type
- Power Rear Windows- Proximity Key For Push Button Start Only - Rear Cupholder
- Redundant Digital Speedometer
- Remote Keyless Entry w/Integrated Key Transmitter, Illuminated Entry and Panic Button
- Remote Releases -Inc: Power Cargo Access- Seats w/Cloth Back Material
- Sliding Front Center Armrest- Trip Computer- Urethane Gear Shift Knob

Mechanical

- 14.5 Gal. Fuel Tank- 140 Amp Alternator
- 4-Wheel Disc Brakes w/4-Wheel ABS, Front Vented Discs, Brake Assist and Hill Hold Control
- 60-Amp/Hr 540CCA Maintenance-Free Battery w/Run Down Protection
- Electric Power-Assist Speed-Sensing Steering- Engine Oil Cooler
- Engine: 1.8L I-4 DOHC Turbocharged -inc: direct injection - Front And Rear Anti-Roll Bars
- Front-Wheel Drive- Gas-Pressurized Shock Absorbers- Security System Pre-Wiring
- Single Stainless Steel Exhaust- Strut Front Suspension w/Coil Springs
- Torsion Beam Rear Suspension w/Coil Springs
- Transmission: 6-Speed Automatic w/Tiptronic

Carbuffs

carbuffs.com

(925) 671-2010

2281-A Via De Mercados

Concord, CA 94520

© 2024 AutoRevo - All rights reserved. - [Powered by AutoRevo](#)