

# 2006 BMW X5 4.4i

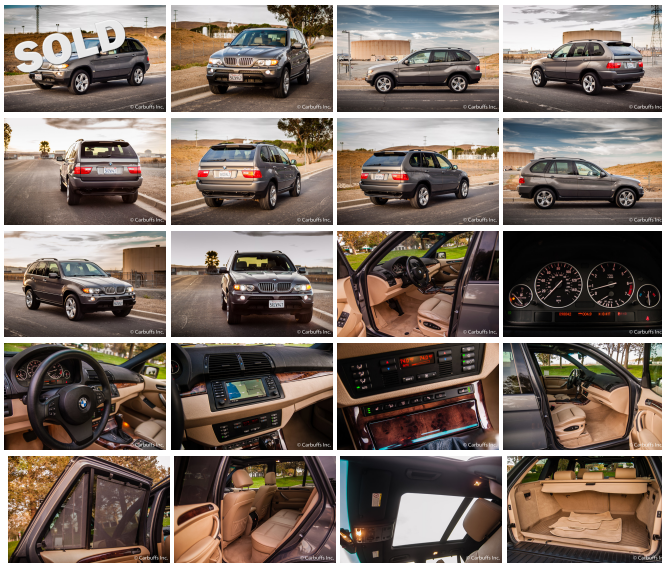
View this car on our website at [carbuffs.com/6010546/ebrochure](http://carbuffs.com/6010546/ebrochure)



Our Price **\$0**

## Specifications:

<b>Year:</b>	2006
<b>VIN:</b>	5UXFB53506LV20990
<b>Make:</b>	BMW
<b>Model/Trim:</b>	X5 4.4i
<b>Condition:</b>	Pre-Owned
<b>Body:</b>	SUV
<b>Exterior:</b>	Stratus Gray Metallic
<b>Engine:</b>	4.4L DOHC 32-valve V8 engine w/Valvetronic, steplessly variable valve timing
<b>Interior:</b>	Beige Leather
<b>Transmission:</b>	Automatic
<b>Mileage:</b>	98,100
<b>Drivetrain:</b>	All Wheel Drive
<b>Economy:</b>	City 16 / Highway 22



Coming soon! Stratus gray metallic exterior with beige leather interior. Smooth and powerful 4.4L V8 engine with automatic transmission. Loaded with options including the sport package, cold weather package, premium package and rear climate package. Also has navigation, premium sound with DSP and factory 19" wheels. Front and rear parking distance control. Panoramic moonroof. Xenon adaptive headlights. Runs and drives great. Clean title and Carfax report. Ready for Tahoe!

## Our Location :



2006 BMW X5 4.4i

Carbuffs - (925) 671-2010 - View this car on our website at [carbuffs.com/6010546/ebrochure](http://carbuffs.com/6010546/ebrochure)

## Installed Options

### Interior

- 3-position memory settings-inc: driver seat, steering wheel, exterior mirrors
- 4-spoke leather-wrapped pwr tilt/telescopic steering wheel w/cruise, audio controls
- Anti-theft AM/FM stereo w/CD-inc: Radio Data System (RDS), hi-fi 10-speaker sound system
- 3-channel FM diversity antenna- Activated-charcoal micro-filter ventilation
- Alarm system w/interior motion detector
- Auto climate control-inc: separate driver/passenger temp settings, auto recirculation control, rear climate controls
- BMW ambient lighting
- Center console-inc: armrest, storage compartment, phone accommodation
- Central locking system-inc: double-lock anti-theft feature, selective unlocking
- Coded driveway protection (prevents engine from starting w/o proper key)
- Courtesy lights w/time delay- Cruise control- Dakota leather upholstery
- Dual front/rear cup holders- Dual illuminated visor vanity mirrors
- Front 12-way pwr bucket seats-inc: 4-way pwr lumbar support
- Front/rear Park Distance Control- Front/rear reading lights w/separate controls
- Fully finished cargo area-inc: retractable/removable cargo cover
- High-gloss dark wood trim
- Instrumentation-inc: electronic analog gauges w/LED illumination, service interval indicator, check control vehicle monitor w/pictogram display, 8-function on-board computer w/exterior temp display
- Interior tailgate release- Leather-wrapped shift knob, handbrake grip, boot
- Locking glovebox- Open door storage- Pre-wiring for BMW Cellular Phone System
- Pwr windows-inc: 1-touch open/close, anti-trapping feature, retained accessory pwr & keyless remote operation
- Rear window defroster
- Remote keyless entry-inc: remote tailgate/window opening, 2-step unlocking
- Split-folding rear seats-inc fold up center armrest- Tire pressure monitor
- Universal garage door opener- Vehicle & key memory

## Option Packages

### Factory Installed Packages

<b>COLD WEATHER PKG</b> -inc: heated front seats, headlight washers, ski bag	\$750
<b>NAVIGATION SYSTEM</b>	\$1,800
<b>PREMIUM HI-FI SOUND SYSTEM W/DSP</b>	\$1,200
<b>PREMIUM PKG</b> -inc: adjustable rear seat backs, auto-dimming interior mirror w/digital compass, auto-dimming exterior mirrors, panorama moonroof, BMW Assist	\$2,500
<b>REAR SIDE-IMPACT AIRBAGS</b>	\$385
<b>SPORT PKG</b> -inc: anthracite headliner, shadowline trim, sport steering wheel, sport suspension, sport seats, titanium-colored front bumper grille, 18" alloy wheels, black chrome exhaust tips	\$1,600
<b>DAKOTA LEATHER SEAT TRIM</b>	

## Exterior

- Adjustable intermittent rear window wiper w/washer- Auto headlight control
- Body-color door/tailgate handles Halogen fog lights
- Pwr heated mirrors w/reverse gear activated passenger mirror auto-tilt-down, puddle lights
- Rain-sensing windshield wipers w/single wipe operation, heated washer jets - Roof rails
- Xenon headlights w/dynamic auto-leveling

## Safety

- 3-position memory settings-inc: driver seat, steering wheel, exterior mirrors
- 4-spoke leather-wrapped pwr tilt/telescopic steering wheel w/cruise, audio controls
- Anti-theft AM/FM stereo w/CD-inc: Radio Data System (RDS), hi-fi 10-speaker sound system
- 3-channel FM diversity antenna- Activated-charcoal micro-filter ventilation
- Alarm system w/interior motion detector
- Auto climate control-inc: separate driver/passenger temp settings, auto recirculation control, rear climate controls
- BMW ambiance lighting
- Center console-inc: armrest, storage compartment, phone accommodation
- Central locking system-inc: double-lock anti-theft feature, selective unlocking
- Coded driveaway protection (prevents engine from starting w/o proper key)
- Courtesy lights w/time delay- Cruise control- Dakota leather upholstery
- Dual front/rear cup holders- Dual illuminated visor vanity mirrors
- Front 12-way pwr bucket seats-inc: 4-way pwr lumbar support
- Front/rear Park Distance Control- Front/rear reading lights w/separate controls
- Fully finished cargo area-inc: retractable/removable cargo cover
- High-gloss dark wood trim
- Instrumentation-inc: electronic analog gauges w/LED illumination, service interval indicator, check control vehicle monitor w/pictogram display, 8-function on-board computer w/exterior temp display
- Interior tailgate release- Leather-wrapped shift knob, handbrake grip, boot
- Locking glovebox- Open door storage- Pre-wiring for BMW Cellular Phone System
- Pwr windows-inc: 1-touch open/close, anti-trapping feature, retained accessory pwr & keyless remote operation
- Rear window defroster
- Remote keyless entry-inc: remote tailgate/window opening, 2-step unlocking
- Split-folding rear seats-inc fold up center armrest- Tire pressure monitor
- Universal garage door opener- Vehicle & key memory

## Mechanical

- P255/55R18 all-season tires- 18" x 8.5" double spoke alloy wheels - 24.3 gallon fuel tank
- 4-wheel anti-lock brakes- 4-wheel disc brakes w/ventilated front discs
- 4.4L DOHC 32-valve V8 engine w/Valvetronic, steplessly variable valve timing
- 6-speed automatic transmission w/OD-inc: adaptive transmission control, Steptronic gear selection, sport/manual mode
- Acoustically decoupled final drive w/hydraulic rear mount- All-season traction control
- Aluminum 4-link integral rear suspension- Double-pivot strut-type front suspension
- Dynamic Stability Control-inc: electronic brake proportioning, Dynamic Brake Control, Hill Descent Control & cornering/brake stability enhancement
- Engine-speed-sensitive pwr rack & pinion steering
- Front subframe w/dual hydraulic mounts- Front/rear stabilizer bars
- P235/65R17 all-season spare tire on 17 x 7.5 cast-alloy wheel
- Self-leveling rear suspension w/air springs- Tool kit
- Twin-tube gas pressure shock absorbers - xDrive full-time all-wheel drive system

## Option Packages Total

\$8,235

## Carbuffs

[carbuffs.com](http://carbuffs.com)

(925) 671-2010

2281-A Via De Mercados

Concord, CA 94520

© 2024 AutoRevo - All rights reserved. - Powered by AutoRevo