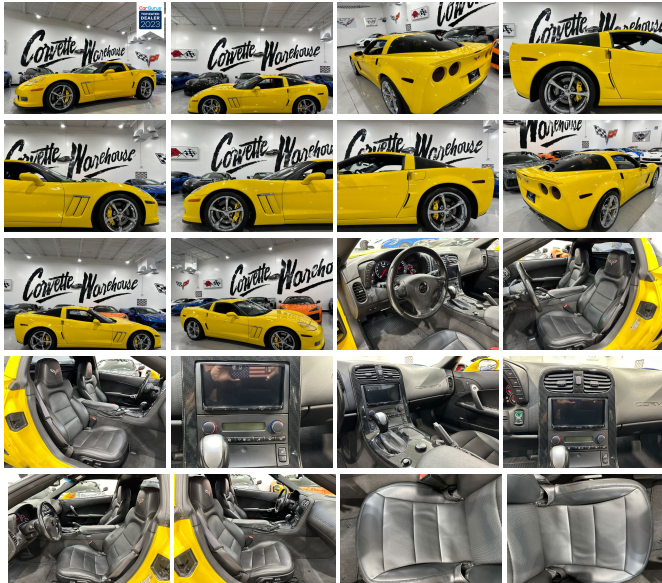


# 2013 Chevrolet Corvette Z16 Grand Sport 3LT, NAV, F55, NPP, Chromes, 48k!

View this car on our website at [corvettewarehouse.com/5848585/ebrochure](http://corvettewarehouse.com/5848585/ebrochure)



Our Price **\$35,995**

## Specifications:

Year:	2013
VIN:	1G1YW2DW8D5100294
Make:	Chevrolet
Stock:	100294
Model/Trim:	Corvette Z16 Grand Sport 3LT, NAV, F55, NPP, Chromes, 48k!
Condition:	Pre-Owned
Body:	Coupe
Exterior:	Velocity Yellow Tintcoat
Engine:	ENGINE, 6.2L (376 CI) V8 SFI
Interior:	Ebony Leather
Transmission:	AUTOMATIC
Mileage:	48,821
Drivetrain:	Rear Wheel Drive
Economy:	City 15 / Highway 25

2013 Velocity Yellow /  
Ebony Leather Chevrolet Corvette  
Z16 Grand Sport Coupe 3LT  
Premium Option Package, F55  
Magnetic Selective Ride  
Control, Automatic  
Transmission, Grand  
Sport Chrome Wheels, NPP dual  
mode exhaust, ZR1 body-colored  
rear spoiler with only 48k Miles!

13,466 Corvettes were produced in  
2013. This was a Very Low  
Production Year!

4,908 of those were Grand

Sport Coupes.

Only 218 Velocity Yellow  
Tintcoat Grand Sport Coupes were  
produced in 2013!

This C6 Z16 Grand Sport Coupe  
comes equipped with the 3LT  
premium option package, Kenwood  
Stereo System, power windows,  
power locks, keyless entry, ZR1  
rear spoiler, NPP Dual Mode  
Exhaust, F55 Ride Control, and the  
Chrome Grand Sport Wheels. It is  
in excellent showroom condition  
and has been highly maintained.

**FINANCING AVAILABLE / ALL  
TRADES WELCOME**

[www.corvettewarehouse.com](http://www.corvettewarehouse.com)

**CALL (972) 620-8200**

---

2013 Chevrolet Corvette Z16 Grand Sport 3LT, NAV, F55, NPP, Chromes, 48k!

Corvette Warehouse - 972-730-7603 - View this car on our website at [corvettewarehouse.com/5848585/ebrochure](http://corvettewarehouse.com/5848585/ebrochure)

## Vehicle History Report : as Of 04/18/2024

**CARFAX**

Snapshot

**2013 CHEVROLET CORVETTE Z16 GRAND SPORT**



**Damage reported: minor damage**



MINOR MODERATE SEVERE

**8** Service history records



**4** Previous owners



Personal vehicle



**48,580** Last reported odometer reading



**FREE CARFAX Report**

See the full CARFAX Report for additional information

\*carfax Snapshot is a reflection of available information on the date the report was pulled. carfax is constantly being updated with new information and is subject to change at any time.

## Our Location :



2013 Chevrolet Corvette Z16 Grand Sport 3LT, NAV, F55, NPP, Chromes, 48k!

Corvette Warehouse - 972-730-7603 - View this car on our website at [corvettewarehouse.com/5848585/ebrochure](http://corvettewarehouse.com/5848585/ebrochure)

## Installed Options

### Interior

- Door locks, power programmable with lockout protection- OnStar Turn-by-Turn Navigation
- Air conditioning, dual-zone automatic climate control with individual climate settings for driver and right-front passenger and outside temperature display
- Air filtration system with pollen filter- Cargo net and luggage shade
- Console, floor 2 covered cup holders, ashtray with cigar lighter, auxiliary power outlet and CD storage
- Cruise control, electronic with set and resume speed - Defogger, rear-window, electric
- Floor mats, carpeted- Hatch release, push button open with power hatch pulldown
- Head-Up Display with dot-matrix readouts for street mode, track mode with g-meter, vehicle speed, engine rpm and readings from key gauges including water temperature and oil pressure
- Instrumentation, electronic analog with Driver Information Center and 2-line display
- Keyless Access with push button start and 2 remote transmitters that enable automatic door unlock and open by touching door switch
- Lighting, interior with courtesy, cargo and glovebox
- Memory Package, recalls 2 driver "presets" for 6-way power seat, outside mirrors and telescoping steering column
- Mirror, inside rearview auto-dimming with compass, includes dual reading lights
- Oil life monitoring system- Seat adjuster, driver 6-way power
- Seat adjuster, front passenger 6-way power
- Seat adjusters, power bolster and power lumbar
- Seats, Sport front bucket with perforated leather seating surfaces includes back angle

## Option Packages

### Factory Installed Packages

ENGINE, 6.2L (376 CI) V8 SFI

(430 hp [320.6 kW] @ 5900 rpm, 424 lb-ft of torque [572.4 N-m] @ 4600 rpm)

TRANSMISSION, 6-SPEED PADDLE SHIFT WITH AUTOMATIC MODES

\$1,250

BLACK GRAND SPORT FENDER BADGES

\$100

CALIPERS, YELLOW

\$595

EXHAUST, DUAL-MODE, PERFORMANCE

increases horsepower, adds 6 hp, aggressive exhaust sound, with 4" polished stainless-steel tips

\$1,195

#### adjustment

- Seats, heated driver and front passenger
- Steering column, power telescopic with manual tilt
- Steering wheel, 3-spoke leather-wrapped- Stolen Vehicle Assistance
- Storage, with lockable glovebox, center console and 2 rear compartments with covers (Only includes 1 rear storage compartment with manual transmission.)
- Theft-deterrent system, vehicle push button start, immobilizer and audible visual alarm
- Universal Home Remote includes garage door opener, 3-channel programmable, located on driver visor
- Visors, driver and front passenger illuminated vanity mirrors
- Windows, power with driver and passenger Express-Down

#### Exterior

- Glass, Solar-Ray light-tinted- Roof panel, 1-piece body-color, removable
- Tires, front P275/35ZR18 Eagle F1 Supercar and rear P325/30ZR19 Eagle F1 Supercar run flat
- Wheels, Grand Sport Silver painted aluminum 18" x 9.5" (45.7 cm x 24.1 cm) front and 19" x 12" (48.3 cm x 30.48 cm) rear
- Fog lamps, front, integral in front fascia
- Headlamps, dual projector lamps, Xenon, High-Intensity Discharge (HID) low-beam tungsten-halogen high-beam with automatic exterior lamp control
- Mirrors, outside heated power-adjustable and driver-side auto-dimming, body-color
- Wipers, front intermittent

#### Safety

- Door locks, power programmable with lockout protection- OnStar Turn-by-Turn Navigation
- Air conditioning, dual-zone automatic climate control with individual climate settings for driver and right-front passenger and outside temperature display
- Air filtration system with pollen filter- Cargo net and luggage shade
- Console, floor 2 covered cup holders, ashtray with cigar lighter, auxiliary power outlet and CD storage
- Cruise control, electronic with set and resume speed - Defogger, rear-window, electric
- Floor mats, carpeted- Hatch release, push button open with power hatch pulldown
- Head-Up Display with dot-matrix readouts for street mode, track mode with g-meter, vehicle speed, engine rpm and readings from key gauges including water temperature and oil pressure
- Instrumentation, electronic analog with Driver Information Center and 2-line display
- Keyless Access with push button start and 2 remote transmitters that enable automatic door unlock and open by touching door switch
- Lighting, interior with courtesy, cargo and glovebox
- Memory Package, recalls 2 driver "presets" for 6-way power seat, outside mirrors and telescoping steering column
- Mirror, inside rearview auto-dimming with compass, includes dual reading lights
- Oil life monitoring system- Seat adjuster, driver 6-way power
- Seat adjuster, front passenger 6-way power
- Seat adjusters, power bolster and power lumbar
- Seats, Sport front bucket with perforated leather seating surfaces includes back angle adjustment
- Seats, heated driver and front passenger
- Steering column, power telescopic with manual tilt
- Steering wheel, 3-spoke leather-wrapped- Stolen Vehicle Assistance
- Storage, with lockable glovebox, center console and 2 rear compartments with covers (Only includes 1 rear storage compartment with manual transmission.)
- Theft-deterrent system, vehicle push button start, immobilizer and audible visual alarm
- Universal Home Remote includes garage door opener, 3-channel programmable, located on driver visor
- Visors, driver and front passenger illuminated vanity mirrors
- Windows, power with driver and passenger Express-Down

#### Mechanical

- Rear axle, 3.42 ratio, limited slip (Included and only available with (MZ6) 6-speed manual transmission.)
- Transmission, 6-speed manual, short-throw includes launch control, specific gearing and quicker ratios
- Brakes, 4-wheel antilock, 4-wheel disc- Calipers, Silver
- Engine access, rear-opening hood
- Engine, 6.2L (376 ci) V8 SFI (430 hp [320.6 kW] @ 5900 rpm, 424 lb-ft of torque [572.4 N-m] @ 4600 rpm)
- Exhaust, aluminized stainless-steel with 3" polished stainless-steel tips - Rear wheel drive
- Steering, power, speed-sensitive rack-and-pinion, variable ratio

#### MAGNETIC SELECTIVE RIDE CONTROL

for ultimate driver control and comfort through the use of driver-selected Tour or Sport modes. **\$1,695**

#### SPOILER, FULL-WIDTH, ZR1-STYLE, BODY-COLOR

**\$350**

#### EMISSIONS, FEDERAL REQUIREMENTS

#### VELOCITY YELLOW TINTCOAT

(Additional charge - premium tintcoat paint.) **\$995**

#### STANDARD PAINT

#### 3LT PREFERRED EQUIPMENT GROUP

includes Standard Equipment **\$5,995**

#### AUDIO SYSTEM WITH NAVIGATION, AM/FM STEREO WITH CD PLAYER, MP3 PLAYBACK AND DVD-BASED TOUCH-SCREEN NAVIGATION

USB port, auxiliary input jack, seek-and-scan, digital clock, auto-tone control, Radio Data System (RDS), automatic volume, TheftLock, 6.5" LCD color display and voice recognition.

#### EBONY, LEATHER SEATING SURFACES

#### SEATS, SPORT FRONT BUCKET WITH PERFORATED LEATHER SEATING SURFACES

includes back angle adjustment

#### WHEELS, GRAND SPORT CHROME ALUMINUM

18" x 9.5" (45.7 cm x 24.1 cm) front and 19" x 12" (48.3 cm x 30.48 cm) rear **\$1,995**

#### Option Packages Total

**\$14,170**

---

Corvette Warehouse  
[corvettewarehouse.com](http://corvettewarehouse.com)  
972-730-7603

2432 Walnut Ridge St.  
Dallas, Texas 75229

© 2024 AutoRevo - All rights reserved. - Powered by [AutoRevo](#)