



2020 BIG TEX 70PI 16FT

Jimmy Degollado 956-423-3434

Our Price \$0

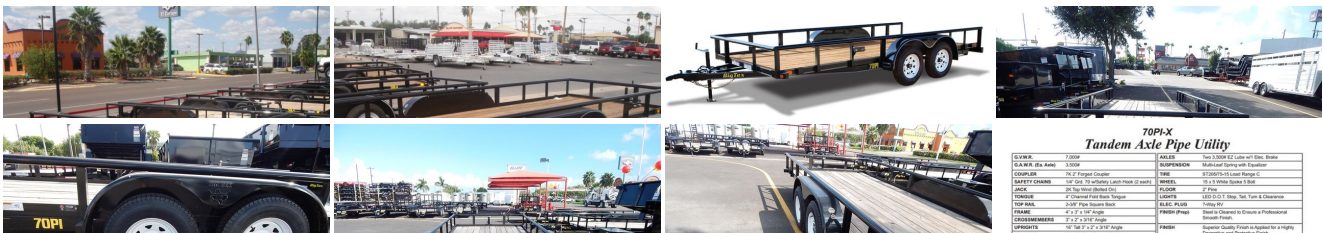
View this vehicle on our website at elliffmotors.com

Elliff Motors

956-423-3434

1307 West Harrison Avenue, Harlingen, TX 78550

Photos
Details
Contact



70PI-X Tandem Axle Pipe Utility	
SKU#	21009
S.A.W. #	1.000
GVWR	10,000
SAFETY CHAINS	1/2" Dia. 10,000 LBS. Break (2 each)
SPRINGS	2x 2" 10,000 LBS. 10,000
FRAMES	2x 3" 10,000 LBS.
AXLES	2x 3" 10,000 LBS.
WHEELS	15" Dia. 10,000 LBS. 10,000
TIRE	15" Dia. 10,000 LBS. 10,000
FINISH	Superior Quality Finish as Applied for a Heavy Duty and Protective Finish

Specifications:

Year:	2020
Make:	BIG TEX
Model/Trim:	70PI 16FT
Condition:	New
Engine:	0 cc

Exterior: Black
Mileage: 0
Hours: 0

Vehicle Description

Standard Features •Forged Coupler •Safety Chains Attached w/Cold Rolled Eyelets •Sand Foot on Jack •Set Back Jack •Lower Jack Support Plate •Fold Back Tongue (14' & Longer) •2-3/8" Pipe Top Rail Capped w/Self Sealing Plugs •Cambered EZ Lube Axles w/1 Electric Brake •Complete Break-A-Way System w/Charger •4 Tie Down Pockets •Grommet Mount Sealed LED Lighting Specs: G.V.W.R. 7,000#, 7K 2" Forged Coupler, 2K Top Wind Jack (Bolted On), 4' Slide In Ramps (Rampgate Also Available) Two 3,500# EZ Lube Axles w/1 Elec. Brake, Multi-Leaf Spring Suspension with Equalizer, Tire ST225/75-15 Load Range C Wheel 15 x 5 White Spoke 5 Bolt', Lights LED D.O.T. Stop, Tail, Turn, & Clearance, Elec. 7-Way RV PlugIF YOU HAVE ANY QUESTIONS ON ANY OTHER MODELS, SIZES, OR OPTION? PLEASE FEEL FREE TO GIVE US A CALL OR EMAIL. WE WILL BE MORE THAN HAPPY TO HELP ANSWER ANY QUESTIONS!!!!

(AVAILABLE IN 14, 16, 18 AND 20FT... PLEASE CALL FOR PRICING)

*Picture may show optional items

Installed Options

Elliff Motors

Elliff Motors

View this car on our website at elliffmotors.com/5576787

Website: elliffmotors.com

Phone: 956-423-3434

Map: 1307 West Harrison Avenue, Harlingen, TX 78550

