



2006 Dodge Durango SLT

Our Price \$7,600

Retail Price \$8,495

View this vehicle on our website at cleburneautoranch.com

Cleburne Auto Ranch

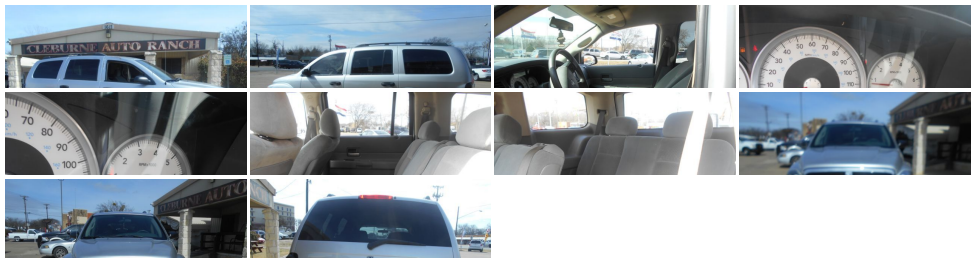
817-558-2000

1612 N Main St , Cleburne, TX 76033

Photos

Details

Contact



Specifications:

Year:	2006
VIN:	1D4HD48N36F105588
Make:	Dodge
Stock:	105588
Model/Trim:	Durango SLT
Condition:	Pre-Owned
Body:	SUV
Exterior:	Bright Silver Metallic
Engine:	4.7L V8 "MAGNUM" ENGINE
Interior:	Slate Gray Two-Tone
Mileage:	140,397
Drivetrain:	Rear Wheel Drive
Economy:	City 14 / Highway 19

Vehicle Description

Magnum 4.7L V8. Odometer is 29389 miles below market average! Bright Silver Metallic 2006 Dodge Durango SLT RWD 5-Speed Automatic
Magnum 4.7L V8The goal of Cleburne Auto Ranch is to exceed customer expectations by providing superior customer service and quality pre-owned vehicles. We realize the financing challenges that exist for hardworking people like you. We carry a large selection of used cars, trucks, sport utility vehicles, and vans to fit your needs. We specialize in working one on one with you. If you ever have a question or problem, solving it will be our top priority.

Installed Options

Interior

- Cloth front bucket seats w/8-way pwr driver side - 2-passenger 3rd row bench seat
- Front/rear floor mats- Pwr door locks- Remote keyless entry- Air conditioning
- Rear air conditioning w/heater
- AM/FM stereo w/compact disc player, CD changer control, (4) speakers
- Passenger side visor vanity mirror- 2nd row 40/20/40 folding split bench seat
- Center console- Tilt steering column- Premium instrument panel
- Woodgrain instrument panel bezel- Pwr windows w/driver one-touch- Speed control
- Rear window defroster- Front/rear pwr outlet
- "Tu Tone" door trim panels w/map pockets- Day/night rearview mirror
- Driver/passenger assist handles- Illuminated entry- Covered rear storage compartment
- Cargo tie-down loops- Variable intermittent front/rear wipers

Exterior

- 5" x 7" pwr mirrors- Body-color front/rear fascia- Body-side moldings
- Roof rack side rails- Fog lamps- Light-tinted windshield & front door glass
- Deep-tinted sunscreen glass (all windows rearward of B-pillar)

Safety

- Cloth front bucket seats w/8-way pwr driver side - 2-passenger 3rd row bench seat
- Front/rear floor mats- Pwr door locks- Remote keyless entry- Air conditioning
- Rear air conditioning w/heater
- AM/FM stereo w/compact disc player, CD changer control, (4) speakers
- Passenger side visor vanity mirror- 2nd row 40/20/40 folding split bench seat
- Center console- Tilt steering column- Premium instrument panel
- Woodgrain instrument panel bezel- Pwr windows w/driver one-touch- Speed control
- Rear window defroster- Front/rear pwr outlet
- "Tu Tone" door trim panels w/map pockets- Day/night rearview mirror
- Driver/passenger assist handles- Illuminated entry- Covered rear storage compartment
- Cargo tie-down loops- Variable intermittent front/rear wipers

Mechanical

- 3.7L (226) SOHC SMPI V6 "Magnum" engine - 4-speed automatic transmission
- P245/70R17 on/off road BSW tires- 17" x 8" cast aluminum wheels
- 4-wheel anti-lock brakes- Rear wheel drive
- 750-amp maintenance free battery w/undown protection- 160-amp alternator
- 3.92 axle ratio- 8.25" rear axle ring gear diameter - 6400# GVWR
- HD suspension-inc: HD front/rear shock absorbers - Front/rear stabilizer bar
- Full-size spare tire w/17" steel wheel, winch carrier- Pwr rack & pinion steering
- Pwr 4-wheel disc brakes- 27 gallon fuel tank

Option Packages

Factory Installed Packages

4.7L V8 "MAGNUM" ENGINE	
-inc: 3.55 axle ratio	\$785

Option Packages Total	\$785
-----------------------	-------

Cleburne Auto Ranch

Cleburne Auto Ranch

View this car on our website at cleburneautoranch.com/5040755

Website: cleburneautoranch.com

Phone: 817-558-2000

Map: [1612 N Main St, Cleburne, TX 76033](#)

