



## 2003 Subaru Forester XS

**Our No-Haggle Price \$5,995**

**Book Retail Value \$7,995**

View this vehicle on our website at [leesburgautoimport.com](http://leesburgautoimport.com)

Leesburg Auto Import

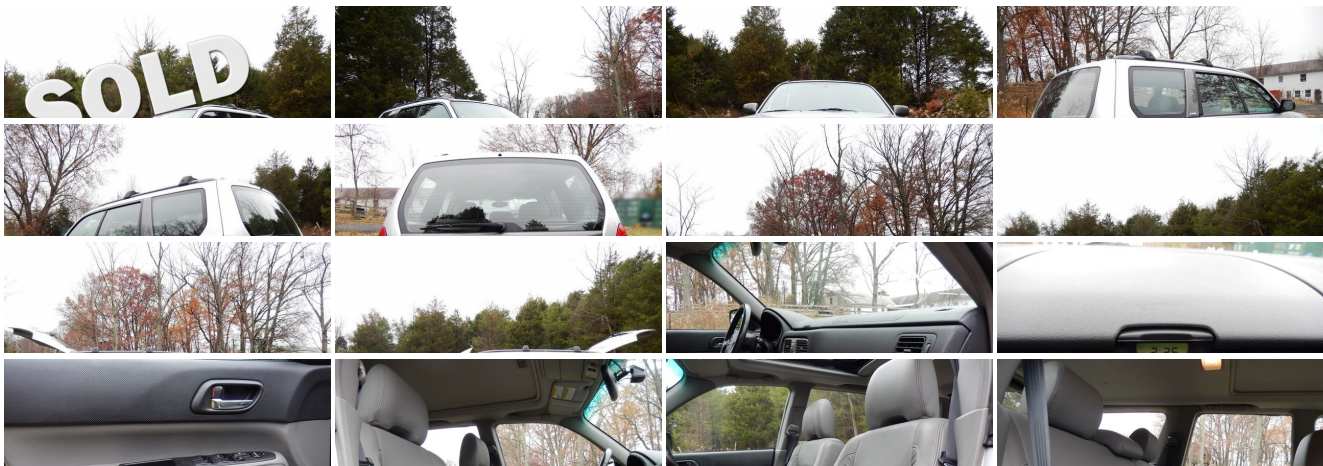
Toll Free: 1-866-249-5348, Local: 703-771-7600

2 Fairfax St SE , Leesburg, Virginia 20175

Photos

Details

Contact





## Specifications:

<b>Year:</b>	2003
<b>VIN:</b>	JF1SG65663H713985
<b>Make:</b>	Subaru
<b>Stock:</b>	713985
<b>Model/Trim:</b>	Forester XS
<b>Condition:</b>	Pre-Owned
<b>Body:</b>	SUV
<b>Exterior:</b>	Platinum Silver Metallic
<b>Engine:</b>	2.5L SOHC SMPI 16-valve 4-cyl horizontally opposed "Phase II" engine
<b>Interior:</b>	Gray Cloth
<b>Mileage:</b>	138,546
<b>Drivetrain:</b>	All Wheel Drive
<b>Economy:</b>	City 21 / Highway 27

## Vehicle Description

## Installed Options

### Interior

- Front/rear carpeted floor mats- Leather seat trim- (2) cargo area grocery bag hooks
- (3) Cargo area subfloor storage compartments/(1) storage bucket
- (4) cargo area tie down hooks
- 60/40 split fold down rear bench seat w/head restraints on all seating positions
- Automatic climate control system- Cargo area cover- Cargo area light
- Center console-inc: auxiliary pwr outlet, cup holders- Chrome inner door handles
- Cruise control- Dome light w/delay feature- Driver seat height/tilt/lumbar adjusters
- Dual cargo area storage pockets
- Electronic AM/FM/weatherband stereo w/cassette, in-dash 6-disc compact disc changer-inc: (4) speakers
- Front bucket dual-mode heated seats w/height adjustable head restraints
- Front seatback pockets- Illuminated ignition switch- In-glass antenna
- Instrumentation-inc: tachometer, digital dual-mode trip odometer, ambient temp gauge, engine coolant temp guage, low-fuel light
- Leather-wrapped steering wheel/shifter/parking brake handle
- Overhead console-inc: dual map lights, storage- Pwr door locks
- Pwr windows-inc: driver-side one-touch down, illuminated switches
- Rear 12-volt pwr outlet- Rear retractable cup holders- Rear window defroster w/timer
- Remote keyless entry- Silver metallic interior accents- Tilt steering column
- Tricot visor vanity mirrors- Upper dash storage pocket-inc: digital clock

### Exterior

- Aluminum-alloy hood- Automatic-off halogen headlamps
- Body-color body-side cladding & bumpers- Daytime running lights
- Large gray metallic fold away heated pwr mirrors- Monotone paint
- Multi-reflector fog lights- Pwr moonroof w/auto open/close
- Rear window wiper/washer w/de-icer- Roof rack w/crossbars
- Variable intermittent windshield wipers w/de-icer

### Safety

- Front/rear carpeted floor mats- Leather seat trim- (2) cargo area grocery bag hooks
- (3) Cargo area subfloor storage compartments/(1) storage bucket
- (4) cargo area tie down hooks
- 60/40 split fold down rear bench seat w/head restraints on all seating positions
- Automatic climate control system- Cargo area cover- Cargo area light
- Center console-inc: auxiliary pwr outlet, cup holders- Chrome inner door handles
- Cruise control- Dome light w/delay feature- Driver seat height/tilt/lumbar adjusters
- Dual cargo area storage pockets
- Electronic AM/FM/weatherband stereo w/cassette, in-dash 6-disc compact disc changer-inc: (4) speakers
- Front bucket dual-mode heated seats w/height adjustable head restraints
- Front seatback pockets- Illuminated ignition switch- In-glass antenna
- Instrumentation-inc: tachometer, digital dual-mode trip odometer, ambient temp gauge, engine coolant temp guage, low-fuel light
- Leather-wrapped steering wheel/shifter/parking brake handle
- Overhead console-inc: dual map lights, storage- Pwr door locks
- Pwr windows-inc: driver-side one-touch down, illuminated switches
- Rear 12-volt pwr outlet- Rear retractable cup holders- Rear window defroster w/timer
- Remote keyless entry- Silver metallic interior accents- Tilt steering column
- Tricot visor vanity mirrors- Upper dash storage pocket-inc: digital clock

### Mechanical

- 15.9 gallon fuel tank- 16" alloy wheels
- 2.5L SOHC SMPI 16-valve 4-cyl horizontally opposed "Phase II" engine
- 4-speed automatic transmission w/OD- 4-wheel anti-lock braking system (ABS)
- All-wheel drive- Electronic brake-force distribution (EBD)- Front/rear stabilizer bar
- Full-size spare tire- HD raised independent front/rear suspension
- P215/60HR16 all-season SBR RWL tires- Pwr vented front/solid rear disc brakes
- Remote fuel filler door release
- Speed-sensitive variable assist pwr rack & pinion steering
- Viscous limited-slip rear differential

All our sales are based on first-come-first-serve policy. We work very hard to accurately describe our vehicles through text descriptions and elaborate photos. When you purchase a pre-owned vehicle it is not a new vehicle. Any used vehicle can have normal wear and blemishes. Please read the descriptions thoroughly and view all pictures.

Leesburg Auto Import

Leesburg Auto Import

View this car on our website at [leesburgautoimport.com/4791431](https://leesburgautoimport.com/4791431)

Website: [leesburgautoimport.com](https://leesburgautoimport.com)

Phone: Toll Free: 1-866-249-5348, Local: 703-771-7600

Map: 2 Fairfax St SE, Leesburg, Virginia 20175

