



2012 Chevrolet Impala LS

Call Now! 225-644-2886

Internet Price \$15,200

View this vehicle on our website at ledetsautos.com



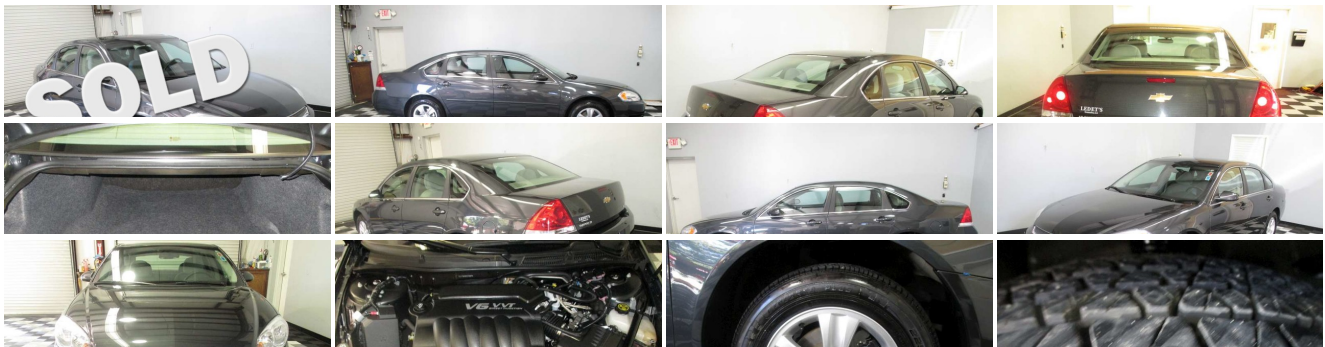
[225-644-2886](tel:225-644-2886)

122 S. Burnside Ave., Gonzales, Louisiana 70737

[Photos](#)

[Details](#)

[Contact](#)





Specifications:

Year:	2012
VIN:	2G1WF5E31C1278819
Make:	Chevrolet
Stock:	278819
Model/Trim:	Impala LS
Condition:	Pre-Owned
Body:	Sedan
Exterior:	Ashen Gray Metallic
Engine:	ENGINE, 3.6L SIDI DOHC V6 VVT
Interior:	Gray Cloth
Transmission:	TRANSMISSION, 6-SPEED AUTOMATIC, ELECTRONICALLY CONTROLLED WITH OVERDRIVE
Mileage:	30,106
Drivetrain:	Front Wheel Drive
Economy:	City 18 / Highway 30

Vehicle Description

Installed Options

Interior

- Floor mats, carpeted front and rear - Seat trim, cloth - Seat, rear fixed bench
- Seats, front bucket - Air conditioning, single-zone manual with air filtration system
- Applique, woodgrain on instrument panel and door
- Assist handles, front passenger and rear outboard
- Cruise control, electronic with set and resume speed - Defogger, rear-window electric
- Door locks, power programmable with lockout protection
- Instrumentation, analog 4-gauge cluster with speedometer, tachometer, coolant temperature, fuel, trip odometer and Driver Information Center
- Lighting, interior with center-mounted dome and rear reading lights
- Mirror, inside rearview manual day/night with map lights - Remote Keyless Entry
- Seat adjuster, driver 6-way power - Seat adjuster, driver manual lumbar control
- Shifter, floor console - Steering column, Tilt-Wheel - Steering wheel, urethane
- Theft-deterrent system, vehicle, PASS-Key III+ - Trunk release, remote
- Visors, driver and front passenger vanity mirrors, covered
- Windows, power with driver Express-Down and passenger lockout

Exterior

- Door handles, body-color - Glass, Solar-Ray light-tinted
- Headlamps, halogen composite with automatic exterior lamp control
- Mirrors, outside power-adjustable body-color - Moldings, body-color bodyside
- Moldings, body-color rocker - Tire, compact spare
- Tires, P225/60R16 all-season, blackwall - Wheels, 16" (40.6 cm) aluminum
- Wipers, front intermittent

Safety

- Floor mats, carpeted front and rear - Seat trim, cloth - Seat, rear fixed bench
- Seats, front bucket - Air conditioning, single-zone manual with air filtration system
- Applique, woodgrain on instrument panel and door
- Assist handles, front passenger and rear outboard
- Cruise control, electronic with set and resume speed - Defogger, rear-window electric
- Door locks, power programmable with lockout protection
- Instrumentation, analog 4-gauge cluster with speedometer, tachometer, coolant temperature, fuel, trip odometer and Driver Information Center
- Lighting, interior with center-mounted dome and rear reading lights
- Mirror, inside rearview manual day/night with map lights - Remote Keyless Entry
- Seat adjuster, driver 6-way power - Seat adjuster, driver manual lumbar control
- Shifter, floor console - Steering column, Tilt-Wheel - Steering wheel, urethane
- Theft-deterrent system, vehicle, PASS-Key III+ - Trunk release, remote
- Visors, driver and front passenger vanity mirrors, covered
- Windows, power with driver Express-Down and passenger lockout

Mechanical

- Engine, 3.6L SIDI DOHC V6 VVT (300 hp [223.7 kW] @ 6500 rpm, 262 lb-ft of torque [353.7 N-m] @ 5300 rpm)
- Transmission, 6-speed automatic, electronically controlled with overdrive
- Alternator, 125 amps - Battery rundown protection
- Brakes, 4-wheel antilock, 4-wheel disc - Exhaust, dual-outlet stainless-steel
- Front wheel drive - Oil life monitoring system - Steering, power, rack-and-pinion
- Suspension, 4-wheel independent, Touring

Option Packages

Factory Installed Packages

ENGINE, 3.6L SIDI DOHC V6 VVT

(300 hp [223.7 kW] @ 6500 rpm, 262 lb-ft of torque [353.7 N-m] @ 5300 rpm)

TRANSMISSION, 6-SPEED AUTOMATIC, ELECTRONICALLY CONTROLLED WITH OVERDRIVE (STD)

Ledet's Auto Sales

Ledet's Auto Sales

View this car on our website at ledetsautos.com/4774258

Website: ledetsautos.com

Phone: [225-644-2886](tel:225-644-2886)

Map: [122 S. Burnside Ave, Gonzales, Louisiana 70737](#)

