

122 S. Burnside Ave
Gonzales, Louisiana
70737

2011 Chevrolet Silverado 1500 LS

Call Now!

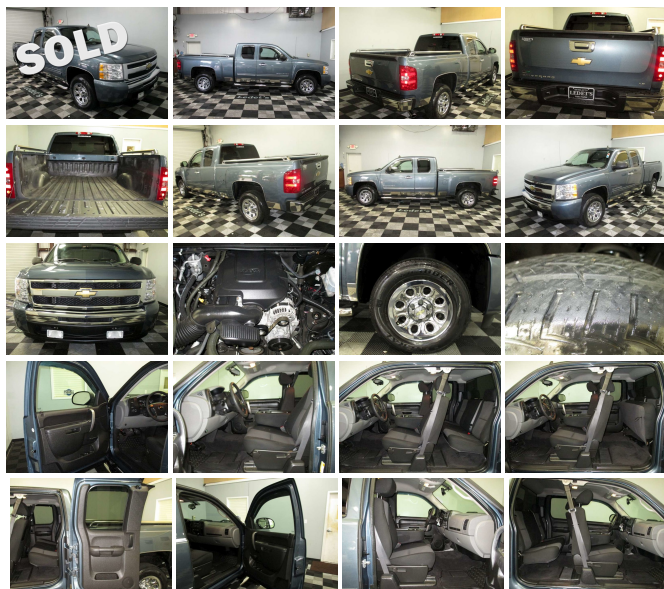
View this car on our website at ledetsautos.com/4705281/ebrochure



Internet Price **\$22,900**

Specifications:

- Year:** 2011
- VIN:** 1GCRCEA9BZ113707
- Make:** Chevrolet
- Stock:** 113707
- Model/Trim:** Silverado 1500 LS
- Condition:** Pre-Owned
- Body:** Pickup Truck
- Exterior:** Imperial Blue Metallic
- Engine:** ENGINE, VORTEC 4.8L VARIABLE VALVE TIMING V8 SFI FLEXFUEL
- Interior:** Black Cloth
- Transmission:** TRANSMISSION, 4-SPEED AUTOMATIC, ELECTRONICALLY CONTROLLED
- Mileage:** 11,053
- Drivetrain:** Rear Wheel Drive
- Economy:** City 14 / Highway 19



2011 Chevrolet Silverado 1500 LS
Ledet's Auto Sales - - View this car on our website at ledetsautos.com/4705281/ebrochure

Our Location :



2011 Chevrolet Silverado 1500 LS

Ledet's Auto Sales - - View this car on our website at ledetsautos.com/4705281/ebrochure

Installed Options

Interior

- Floor covering, color-keyed carpeting with rubberized vinyl floor mats (Extended and Crew Cab models also include rear floor mats) (May be substituted with (BG9) Black rubberized vinyl floor covering.)
- Remote Keyless Entry with 2 transmitters, panic button and content theft alarm
- Seat Trim, Cloth
- Seats, front 40/20/40 split-bench, 3-passenger, driver and front passenger manual reclining with outboard head restraints and center fold-down armrest with storage
- Air conditioning, single-zone manual front climate control
- Assist handle, front passenger (Also includes rear assist handles in the headliner on Extended and Crew Cab Models.)
- Coat hooks, rear driver and passenger side
- Cruise control, electronic with set and resume speed, located on steering wheel
- Cup holders, front (Also includes rear cupholders on Extended and Crew Cab models.)
- Door locks, power includes Remote Keyless Entry
- Driver Information Center with odometer, trip odometer and message center (monitors numerous systems depending on vehicle equipment level including low fuel, turn signal "on", transmission temperature and oil change notification) (Driver Information Center controls are operated through the trip odometer button unless (UK3) steering wheel mounted audio controls is ordered. On 1LT, 1SF and 1LZ, includes 8-point compass and outside temperature.)
- Instrumentation, analog with speedometer, odometer, fuel level, engine temperature, and tachometer
- Lighting, interior with dome and reading lights, illuminated entry feature and backlit instrument panel switches
- Mirror, inside rearview manual day/night
- Power outlets, 2 auxiliary instrument panel-mounted with covers, 12-volt
- Seat adjuster, manual lumbar control on the driver-side
- Seat, rear bench (folds up), full width, folding, 3-passenger (includes child seat top tether anchor) (Standard with Extended Cab models only.)
- Steering column, Tilt-Wheel, adjustable with brake/transmission shift interlock
- Steering wheel, includes theft-deterrent locking feature

Option Packages

Factory Installed Packages

ENGINE, VORTEC 4.8L VARIABLE VALVE TIMING V8 SFI FLEXFUEL

capable of running on unleaded or up to 85% ethanol (302 hp [225.2 kW] @ 5600 rpm, 305 lb-ft torque [411.8 N-m] @ 4600 rpm), iron block

TRANSMISSION, 4-SPEED AUTOMATIC, ELECTRONICALLY CONTROLLED

with overdrive and tow/haul mode

- Visors, driver and front passenger, sliding, with clip and passenger side vanity mirror with cover, Opal Gray-colored
- Warning tones headlamp on, key-in-ignition, driver and passenger buckle up reminder and turn signal on
- Windows, power with driver Express-Down

Exterior

- Air dam, Black- Bumper, front chrome (Includes body-color bumper end caps.)
- Bumper, rear chrome, step-style with pad- Door handles, Black
- Glass, Solar-Ray deep-tinted (all windows except light-tinted glass on windshield and driver- and front passenger-side glass) (With Regular Cab models, includes rear window. With Extended Cab models, includes rear and rear quarter windows. With Crew Cab models or (C49) rear-window defogger, includes light-tinted rear window.)
- Grille, chrome surround (Not included when (VAT) Chrome grille, LPO or (VAS) Body-color grille, LPO are ordered.)
- Headlamps, dual halogen composite with automatic exterior lamp control and flash-to-pass feature
- Lamps, dual cargo area lamps
- Mirrors, outside heated power-adjustable, Black, manual-folding
- Moldings, bodyside, body-colored (Moldings are deleted if any SEO paint is ordered.)
- Pickup box, Fleetside
- Tire carrier, outside spare, winch-type mounted under frame at rear
- Tires, P245/70R17 all-season, blackwall includes a blackwall spare tire (Requires 2WD models.)
- Wheel, 17" (43.2 cm) steel spare (spare wheel will not cosmetically match the other 4 wheels)
- Wheels, 4-17" x 7.5" (43.2 cm x 19.1 cm) 6-lug chrome-styled steel includes chrome center caps (spare wheel will not cosmetically match the other 4 wheels)
- Wipers, front intermittent wet-arm with pulse washers

Safety

- Floor covering, color-keyed carpeting with rubberized vinyl floor mats (Extended and Crew Cab models also include rear floor mats) (May be substituted with (BG9) Black rubberized vinyl floor covering.)
- Remote Keyless Entry with 2 transmitters, panic button and content theft alarm
- Seat Trim, Cloth
- Seats, front 40/20/40 split-bench, 3-passenger, driver and front passenger manual reclining with outboard head restraints and center fold-down armrest with storage
- Air conditioning, single-zone manual front climate control
- Assist handle, front passenger (Also includes rear assist handles in the headliner on Extended and Crew Cab Models.)
- Coat hooks, rear driver and passenger side
- Cruise control, electronic with set and resume speed, located on steering wheel
- Cup holders, front (Also includes rear cupholders on Extended and Crew Cab models.)
- Door locks, power includes Remote Keyless Entry
- Driver Information Center with odometer, trip odometer and message center (monitors numerous systems depending on vehicle equipment level including low fuel, turn signal "on", transmission temperature and oil change notification) (Driver Information Center controls are operated through the trip odometer button unless (UK3) steering wheel mounted audio controls is ordered. On 1LT, 1SF and 1LZ, includes 8-point compass and outside temperature.)
- Instrumentation, analog with speedometer, odometer, fuel level, engine temperature, and tachometer
- Lighting, interior with dome and reading lights, illuminated entry feature and backlit instrument panel switches
- Mirror, inside rearview manual day/night
- Power outlets, 2 auxiliary instrument panel-mounted with covers, 12-volt
- Seat adjuster, manual lumbar control on the driver-side
- Seat, rear bench (folds up), full width, folding, 3-passenger (includes child seat top tether anchor) (Standard with Extended Cab models only.)
- Steering column, Tilt-Wheel, adjustable with brake/transmission shift interlock
- Steering wheel, includes theft-deterrent locking feature
- Visors, driver and front passenger, sliding, with clip and passenger side vanity mirror with cover, Opal Gray-colored
- Warning tones headlamp on, key-in-ignition, driver and passenger buckle up reminder and turn signal on
- Windows, power with driver Express-Down

Mechanical

- Engine, Vortec 4.8L Variable Valve Timing V8 SFI FlexFuel capable of running on unleaded or up to 85% ethanol (302 hp [225.2 kW] @ 5600 rpm, 305 lb-ft torque [411.8 N-m] @ 4600 rpm), iron block
- Transmission, 4-speed automatic, electronically controlled with overdrive and tow/haul mode (On Crew Cab models, requires (L20) Vortec 4.8L V8 SFI Flex-Fuel engine. Not available on C*10953 models.)
- Alternator, 145 amps

- Battery, heavy-duty 600 cold-cranking amps, maintenance-free with rundown protection and retained accessory power
- Brakes, 4-wheel antilock, front disc/rear drum
- Exhaust, aluminized stainless-steel muffler and tailpipe
- Frame, fully-boxed, hydroformed front section
- GVWR, 6800 lbs. (3084 kg) (Requires CC10753 or CC10543 models.)
- Rear axle, 3.23 ratio (Refer to Engine/Axle chart for availability.) - Rear wheel drive
- Steering, power, rack-and-pinion
- Suspension Package, Handling/Trailer, heavy-duty includes 46 mm piston monotube shocks and 36mm front stabilizer bar (Included and only available with (Z82) Trailer package on Crew Cab models. Standard on Extended Cab models.)
- Suspension, front independent, coil over shock
- Suspension, rear 2-stage multi-leaf springs, semi-elliptic

Ledet's Auto Sales

ledetsautos.com

122 S. Burnside Ave

Gonzales, Louisiana 70737

© 2024 AutoRevo - All rights reserved. - Powered by [AutoRevo](#)