

122 S. Burnside Ave
Gonzales, Louisiana
70737

2011 GMC Sierra 1500 SLE

Call Now!

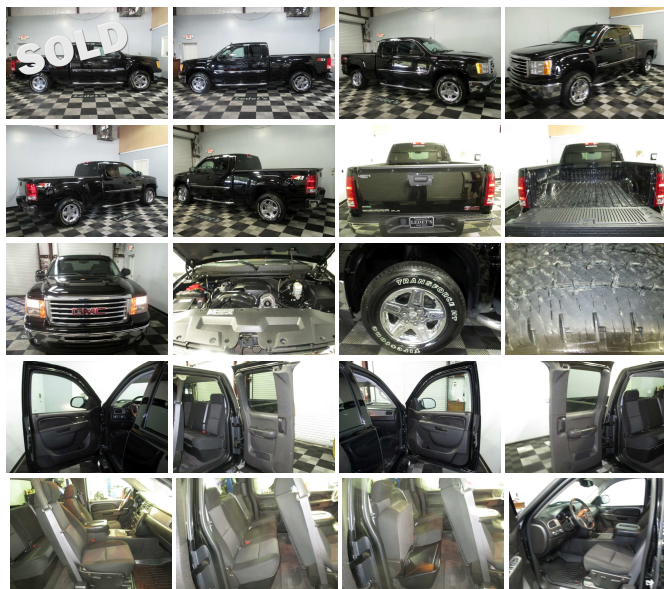
View this car on our website at ledetsautos.com/4676099/ebrochure



Internet Price **\$24,300**

Specifications:

Year:	2011
VIN:	1GTR2VE33BZ192496
Make:	GMC
Stock:	192496B
Model/Trim:	Sierra 1500 SLE
Condition:	Pre-Owned
Body:	Pickup Truck
Exterior:	Onyx Black
Engine:	Rear axle, 3.42 ratio (Refer to Engine/Axle chart for availability.)
Interior:	Black
Mileage:	71,754
Drivetrain:	4 Wheel Drive
Economy:	City 15 / Highway 21



2011 GMC Sierra 1500 SLE

Ledet's Auto Sales - - View this car on our website at ledetsautos.com/4676099/ebrochure

Our Location :



2011 GMC Sierra 1500 SLE

Ledet's Auto Sales - - View this car on our website at ledetsautos.com/4676099/ebrochure

Installed Options

Interior

- Air conditioning, single-zone manual front climate control (Upgradeable to (CJ2) dual-zone automatic air conditioning on Extended and Crew Cab models.)
- Door locks, power includes Remote Keyless Entry
- Floor covering, color-keyed carpeting with rubberized vinyl floor mats (Extended and Crew Cab models also include rear floor mats) (May be substituted with (BG9) Graphite-colored rubberized vinyl floor covering.)
- Power outlets 2 auxiliary instrument panel-mounted with covers, 12-volt
- Remote vehicle starter prep package includes Remote Keyless Entry with 2 transmitters, panic button and content theft alarm (To enable remote start capability, new key fobs and vehicle reprogramming are required. Please see dealer for details. Remote Keyless Entry does not lock/unlock tailgate.)
- Seat trim, Premium Cloth
- Seats, front 40/20/40 split-bench 3-passenger, driver and front passenger manual reclining, center fold-down armrest with storage, lockable storage compartment in seat cushion (includes auxiliary power outlet), adjustable outboard head restraints and storage pockets on Extended and Crew Cab models
- Assist handle, front passenger (Also includes rear assist handles in the headliner on Extended and Crew Cab models.)
- Coat hooks, rear driver and passenger side
- Cruise control, electronic with set and resume speed, located on steering wheel
- Cup holders, front (Also includes rear cupholders on Extended and Crew Cab models.)
- Driver Information Center with odometer, trip odometer and message center (monitors numerous systems depending on vehicle equipment level including low fuel, turn signal "on", transmission temperature and oil change notification) (Driver Information Center controls are operated through the trip button unless (UK3) steering wheel mounted audio controls is ordered. On 3SA, 3SF and 4SA, includes 8-point compass and outside temperature.)
- Headliner, Opal Gray-colored cloth with matching retainer moldings
- Instrumentation, analog with speedometer, fuel level, engine temperature, and tachometer (Includes voltmeter and oil pressure indicators.)
- Lighting, interior with dome and reading lights, illuminated entry feature and backlit instrument panel switches

• Please include dealer name and address

- Mirror, inside rearview manual day/night
- Seat adjuster, manual lumbar control on the driver-side
- Seat, rear 60/40 folding bench (folds up), 3-passenger, folding (includes child seat top tether anchor) (Requires Extended or Crew Cab Models.)
- Steering column Tilt-Wheel, adjustable with brake/transmission shift interlock
- Steering wheel, leather-wrapped with theft-deterrent locking feature
- Visors, driver and front passenger sliding with clip and illuminated vanity mirror on driver and passenger-side, Opal Gray-colored
- Warning tones headlamp on, key-in-ignition, driver and passenger buckle up reminder and turn signal on
- Windows, power with driver Express-Down
- Windows, power, rear access door (Requires Extended Cab Models.)

Exterior

- Mirrors, outside heated power-adjustable, Black, manual-folding (Upgradeable to (DPN) outside vertical camper mirrors. Upgradeable to (DL3) outside heated, power adjustable, power folding mirrors if (GAT) All-Terrain Package or (X31) Body Color All-Terrain Package is ordered.)
- Recovery hooks, front, frame-mounted (Standard on 4WD Models.)
- Tires, P265/70R17 all-season, blackwall includes a blackwall spare tire (Requires 4WD models. Not available with (Z71) Off-Road Suspension Package.)
- Wheels, 4 - 17" x 7.5" (43.2 cm x 19.1 cm) 6-lug chrome-styled steel includes chrome center caps (spare wheel will not cosmetically match the other 4 wheels) (Upgradeable to (N88) 4 - 17" x 7.5" (43.2 cm x 19.1 cm) 6-lug polished cast aluminum wheels or (S84) 4 - 20" x 8.5" (50.8 cm x 21.6 cm) chrome-clad aluminum wheels. Not available with (Z71) Off-Road Suspension Package.)
- Air dam, Black- Bumper, front chrome (Includes body-color bumper top caps.)
- Bumper, rear chrome, step-style with pad- Door handles, black
- Glass, Solar-Ray deep-tinted (all windows except light-tinted glass on windshield and driver- and front passenger-side glass) (With Regular Cab models, includes rear window. With Extended Cab models, includes rear and rear quarter windows. With Crew Cab models or (C49) rear-window defogger, includes light-tinted rear window. Included with (PCM) Work Truck Preferred Package.)
- Grille, chrome surround (Not included when (VAT) Chrome grille, LPO is ordered.)
- Headlamps, dual halogen composite with automatic exterior lamp control and flash-to-pass feature
- Lamps, dual cargo area lamps
- Moldings, bodyside, body-colored (Moldings are deleted if any SEO paint is ordered.)
- Spare tire lock keyed cylinder lock that utilizes same key as ignition and door
- Tailgate protection, top of tailgate protection cap
- Tire carrier outside spare, winch-type mounted under frame at rear
- Wheel, 17" (43.2 cm) steel spare (spare wheel will not cosmetically match the other 4 wheels)
- Wipers, front intermittent wet-arm with pulse washers

Safety

- Air conditioning, single-zone manual front climate control (Upgradeable to (CJ2) dual-zone automatic air conditioning on Extended and Crew Cab models.)
- Door locks, power includes Remote Keyless Entry
- Floor covering, color-keyed carpeting with rubberized vinyl floor mats (Extended and Crew Cab models also include rear floor mats) (May be substituted with (BG9) Graphite-colored rubberized vinyl floor covering.)
- Power outlets 2 auxiliary instrument panel-mounted with covers, 12-volt
- Remote vehicle starter prep package includes Remote Keyless Entry with 2 transmitters, panic button and content theft alarm (To enable remote start capability, new key fobs and vehicle reprogramming are required. Please see dealer for details. Remote Keyless Entry does not lock/unlock tailgate.)
- Seat trim, Premium Cloth
- Seats, front 40/20/40 split-bench 3-passenger, driver and front passenger manual reclining, center fold-down armrest with storage, lockable storage compartment in seat cushion (includes auxiliary power outlet), adjustable outboard head restraints and storage pockets on Extended and Crew Cab models
- Assist handle, front passenger (Also includes rear assist handles in the headliner on Extended and Crew Cab models.)
- Coat hooks, rear driver and passenger side
- Cruise control, electronic with set and resume speed, located on steering wheel
- Cup holders, front (Also includes rear cupholders on Extended and Crew Cab models.)
- Driver Information Center with odometer, trip odometer and message center (monitors numerous systems depending on vehicle equipment level including low fuel, turn signal "on", transmission temperature and oil change notification) (Driver Information Center controls are operated through the trip button unless (UK3) steering wheel mounted audio controls is ordered. On 3SA, 3SF and 4SA, includes 8-point compass and outside temperature.)
- Headliner, Opal Gray-colored cloth with matching retainer moldings
- Instrumentation, analog with speedometer, fuel level, engine temperature, and tachometer (Includes voltmeter and oil pressure indicators.)
- Lighting, interior with dome and reading lights, illuminated entry feature and backlit instrument panel switches
- Mirror, inside rearview manual day/night

- Mirror, inside rearview manual day/night
- Seat adjuster, manual lumbar control on the driver-side
- Seat, rear 60/40 folding bench (folds up), 3-passenger, folding (includes child seat top tether anchor) (Requires Extended or Crew Cab Models.)
- Steering column Tilt-Wheel, adjustable with brake/transmission shift interlock
- Steering wheel, leather-wrapped with theft-deterrent locking feature
- Visors, driver and front passenger sliding with clip and illuminated vanity mirror on driver and passenger-side, Opal Gray-colored
- Warning tones headlamp on, key-in-ignition, driver and passenger buckle up reminder and turn signal on
- Windows, power with driver Express-Down
- Windows, power, rear access door (Requires Extended Cab Models.)

Mechanical

- Brakes, 4-wheel antilock, front disc/rear drum
- Engine, Vortec 4.8L Variable Valve Timing V8 SFI FlexFuel capable of running on unleaded or up to 85% ethanol (302 hp [225.2 kW] @ 5600 rpm, 305 lb-ft torque [411.8 N-m] @ 4600 rpm), iron block (Not available on T*10953 models.)
- Transmission, 4-speed automatic, electronically controlled with overdrive and tow/haul mode (On Crew Cab models, requires (L20) Vortec 4.8L V8 SFI Flex-Fuel engine. Not available on T*10953 models.)
- Alternator, 145 amps
- Battery, heavy-duty 600 cold-cranking amps maintenance-free with rundown protection and retained accessory power
- Exhaust, aluminized stainless-steel muffler and tailpipe- Four wheel drive
- Frame, fully-boxed, hydroformed front section
- GVWR, 7000 lbs. (3175 kg) (Requires TC10753 models and (NHT) Max Trailering Pack or TK10753, TK10953 or TK10543 models.)
- Pickup box, Wideside- Rear axle, 3.42 ratio (Refer to Engine/Axle chart for availability.)
- Steering, power, rack-and-pinion
- Suspension Package, Handling/Trailering, heavy-duty includes 46 mm piston monotube shocks and 36mm front stabilizer bar (Includes 36mm front stabilizer bar when (NHT) Max Trailering Pack is ordered.)
- Suspension, front independent, coil over shock
- Suspension, rear 2-stage multi-leaf springs, semi-elliptic
- Tools, mechanical jack and wheel wrench located in back of cab
- Transfer case, electronic Autotrac with rotary dial controls (Requires 4WD models.)

Ledet's Auto Sales

ledetsautos.com

122 S. Burnside Ave

Gonzales, Louisiana 70737

© 2024 AutoRevo - All rights reserved. - **Powered by AutoRevo**