

122 S. Burnside Ave  
Gonzales, Louisiana  
70737

# 2009 Chevrolet Silverado 1500 LT

**Call Now!**

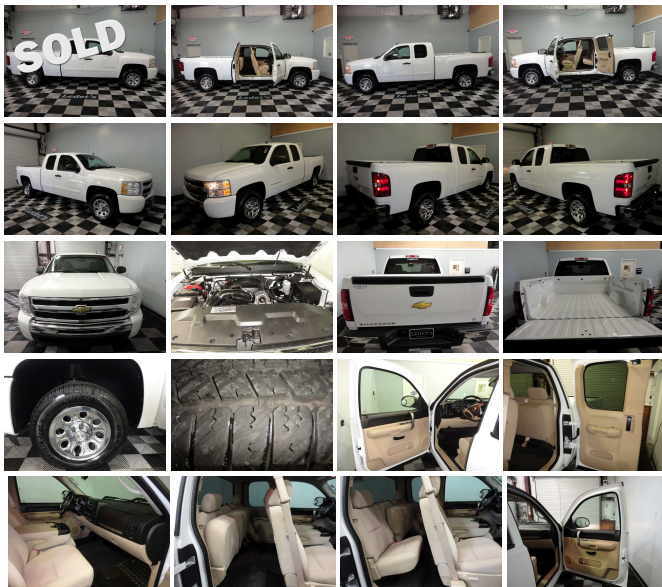
View this car on our website at [ledetsautos.com/4598472/ebrochure](http://ledetsautos.com/4598472/ebrochure)



Internet Price **\$18,200**

## Specifications:

<b>Year:</b>	2009
<b>VIN:</b>	1GCEC29C59Z292596
<b>Make:</b>	Chevrolet
<b>Stock:</b>	292596
<b>Model/Trim:</b>	Silverado 1500 LT
<b>Condition:</b>	Pre-Owned
<b>Body:</b>	Pickup Truck
<b>Exterior:</b>	Summit White
<b>Engine:</b>	ENGINE, VORTEC 4.8L V8 SFI
<b>Interior:</b>	Gray
<b>Mileage:</b>	93,326
<b>Drivetrain:</b>	Rear Wheel Drive
<b>Economy:</b>	City 14 / Highway 19



2009 Chevrolet Silverado 1500 LT

Ledet's Auto Sales - - View this car on our website at [ledetsautos.com/4598472/ebrochure](http://ledetsautos.com/4598472/ebrochure)

## Our Location :



2009 Chevrolet Silverado 1500 LT

Ledet's Auto Sales - - View this car on our website at [ledetsautos.com/4598472/ebrochure](http://ledetsautos.com/4598472/ebrochure)

## Installed Options

### Interior

- Air conditioning, single-zone manual front climate control
- Door locks, power includes Remote Keyless Entry
- Floor covering, color-keyed carpeting with rubberized vinyl floor mats (Extended and Crew Cab models also include rear floor mats) (May be substituted with (BG9) Black rubberized vinyl floor covering.)
- Power outlets, 2 auxiliary instrument panel-mounted with covers, 12-volt
- Remote Keyless Entry with 2 transmitters, panic button and content theft alarm
- Remote vehicle starter prep package includes Remote Keyless Entry (To enable remote start capability, new key fobs and vehicle reprogramming are required. Please see dealer for details. Remote Keyless Entry does not lock/unlock tailgate when (PDF) Exterior Plus Package, (PDA) Texas Edition or (PEB) Regional Value Package is ordered.)
- Seat trim, Premium Cloth
- Seats, front 40/20/40 split-bench, 3-passenger, driver and front passenger manual reclining center fold-down armrest with storage, lockable storage compartment in seat cushion (includes auxiliary power outlet), adjustable outboard head restraints and storage pockets on Extended and Crew Cab models
- Assist handle, front passenger (Also includes rear assist handles in the headliner on Extended and Crew Cab Models.)
- Coat hooks, rear driver and passenger side
- Cruise control, electronic with set and resume speed, located on steering wheel
- Cup holders, front (Also includes rear cupholders on Extended and Crew Cab models.)
- Driver Information Center with odometer, trip odometer and message center (monitors numerous systems depending on vehicle equipment level including low fuel, turn signal "on", transmission temperature and oil change notification) (Driver Information Center controls are operated through the trip odometer button unless (JK3) steering wheel mounted audio controls is ordered. On 1LT, 1SF and 1LZ, includes 8-point compass and outside temperature.)
- Instrumentation, analog with speedometer, odometer, fuel level, engine temperature, and tachometer (Includes voltmeter and oil pressure indicators.)
- Lighting, interior with dome and reading lights, illuminated entry feature and backlit instrument panel switches
- Mirror, inside rearview manual day/night

## Option Packages

### Factory Installed Packages

#### ENGINE, VORTEC 4.8L V8 SFI

(295 hp [220.0 kW] @ 5600 rpm, 305 lb-ft torque  
[411.8 N-m] @ 4600 rpm), iron block

#### SUSPENSION PACKAGE, HANDLING/TRAILERING, HEAVY-DUTY

includes 46 mm piston monotube shocks and  
34mm front stabilizer bar

- Seat adjuster, manual lumbar control on the driver-side
- Seat, rear 60/40 folding bench (folds up), 3-passenger, folding (includes child seat top tether anchor) (Requires Extended or Crew Cab Models.)
- Steering wheel, leather-wrapped with theft-deterrent locking feature
- Visors, driver and front passenger, sliding with clip and illuminated vanity mirror on driver and passenger-side, Opal Gray-colored
- Warning tones headlamp on, key-in-ignition, driver and passenger buckle up reminder and turn signal on
- Windows, power with driver Express-Down (Includes front passenger Express-down when (PDD) Exterior Plus Package is ordered.)
- Windows, power, rear access door (Requires Extended Cab Models.)

---

## Exterior

- Mirrors, outside heated power-adjustable, Black, manual-folding (Upgradable to (DL3) outside heated, power-adjustable, power-folding mirrors only when (PDD) Exterior Plus Package is ordered or (DPN) outside vertical camper mirrors.)
- Tires, P245/70R17 all-season, blackwall includes a blackwall spare tire (Requires 2WD models. Not available with (Z71) Off-Road Suspension Package or (L76) Vortec 6.0L V8 SFI engine.)
- Wheels, 4-17" x 7.5" (43.2 cm x 19.1 cm) 6-lug chrome-styled steel includes chrome center caps (spare wheel will not cosmetically match the other 4 wheels) (Upgradeable to (N56) 4-17" x 7.5" (43.2 cm x 19.1 cm) 6-lug custom aluminum wheels, (N87) 4-18" x 8" (45.7 cm x 20.3 cm) aluminum wheels or (S83) 4-20" x 8.5" (50.8 cm x 21.6 cm) chrome clad aluminum wheels. Not available with (Z71) Off-Road Suspension Package.)
- Air dam, Black- Bumper, front chrome (Includes body-color bumper end caps.)
- Bumper, rear chrome, step-style with pad- Door handles, Black
- Glass, Solar-Ray deep-tinted (all windows except light-tinted glass on windshield and driver and front passenger-side glass) (With Regular Cab models, includes rear window. With Extended Cab models, includes rear and rear quarter windows. With Crew Cab models or (C49) rear-window defogger, includes light-tinted rear window.)
- Grille, chrome surround
- Headlamps, dual halogen composite with automatic exterior lamp control and flash-to-pass feature
- Lamps, dual cargo area lamps
- Moldings, bodyside, body-colored (Moldings are deleted if any SEO paint is ordered.)
- Spare tire lock keyed cylinder lock that utilizes same key as ignition and door
- Tire carrier, outside spare, winch-type mounted under frame at rear
- Wheel, 17" (43.2 cm) steel spare (spare wheel will not cosmetically match the other 4 wheels)
- Wipers, front intermittent wet-arm with pulse washers

---

## Safety

- Air conditioning, single-zone manual front climate control
- Door locks, power includes Remote Keyless Entry
- Floor covering, color-keyed carpeting with rubberized vinyl floor mats (Extended and Crew Cab models also include rear floor mats) (May be substituted with (BG9) Black rubberized vinyl floor covering.)
- Power outlets, 2 auxiliary instrument panel-mounted with covers, 12-volt
- Remote Keyless Entry with 2 transmitters, panic button and content theft alarm
- Remote vehicle starter prep package includes Remote Keyless Entry (To enable remote start capability, new key fobs and vehicle reprogramming are required. Please see dealer for details. Remote Keyless Entry does not lock/unlock tailgate when (PDF) Exterior Plus Package, (PDA) Texas Edition or (PEB) Regional Value Package is ordered.)
- Seat trim, Premium Cloth
- Seats, front 40/20/40 split-bench, 3-passenger, driver and front passenger manual reclining center fold-down armrest with storage, lockable storage compartment in seat cushion (includes auxiliary power outlet), adjustable outboard head restraints and storage pockets on Extended and Crew Cab models
- Assist handle, front passenger (Also includes rear assist handles in the headliner on Extended and Crew Cab Models.)
- Coat hooks, rear driver and passenger side
- Cruise control, electronic with set and resume speed, located on steering wheel
- Cup holders, front (Also includes rear cupholders on Extended and Crew Cab models.)
- Driver Information Center with odometer, trip odometer and message center (monitors numerous systems depending on vehicle equipment level including low fuel, turn signal "on", transmission temperature and oil change notification) (Driver Information Center controls are operated through the trip odometer button unless (UK3) steering wheel mounted audio controls is ordered. On 1LT, 1SF and 1LZ, includes 8-point compass and outside temperature.)
- Instrumentation, analog with speedometer, odometer, fuel level, engine temperature, and tachometer (Includes voltmeter and oil pressure indicators.)
- Lighting, interior with dome and reading lights, illuminated entry feature and backlit instrument panel switches
- Mirror, inside rearview manual day/night
- Seat adjuster, manual lumbar control on the driver-side
- Seat, rear 60/40 folding bench (folds up), 3-passenger, folding (includes child seat top tether anchor) (Requires Extended or Crew Cab Models.)
- Steering wheel, leather-wrapped with theft-deterrent locking feature

- Visors, driver and front passenger, sliding with clip and illuminated vanity mirror on driver and passenger-side, Opal Gray-colored
- Warning tones headlamp on, key-in-ignition, driver and passenger buckle up reminder and turn signal on
- Windows, power with driver Express-Down (Includes front passenger Express-down when (PDD) Exterior Plus Package is ordered.)
- Windows, power, rear access door (Requires Extended Cab Models.)

---

## Mechanical

- Brakes, 4-wheel antilock, front disc/rear drum
- Engine, Vortec 4.8L V8 SFI (295 hp [220.0 kW] @ 5600 rpm, 305 lb-ft torque [411.8 N-m] @ 4600 rpm), iron block (Standard on all models except C\*10953 Models. Not available on C\*10953 models.)
- Transmission, 4-speed automatic, electronically controlled with overdrive and tow/haul mode (On Crew Cab models, requires (LY2) Vortec 4.8L V8 SFI engine.)
- Alternator, 145 amps
- Battery, heavy-duty 600 cold-cranking amps, maintenance-free with rundown protection and retained accessory power
- Exhaust, aluminized stainless-steel muffler and tailpipe
- Frame, fully-boxed, hydroformed front section
- GVWR, 6800 lbs. (3084 kg) (Requires CC10753, CC10543, CK10903, and CK10553 models. Standard on CC10543 and CK10553 models.)
- Pickup box, Fleetside- Rear wheel drive- Steering, power, rack-and-pinion
- Suspension Package, Handling/Trailer, heavy-duty includes 46 mm piston monotube shocks and 34mm front stabilizer bar (Includes 36mm front stabilizer bar when (NHT) Max Trailer Pack is ordered.)
- Suspension, front independent, coil over shock
- Suspension, rear 2-stage multi-leaf springs, semi-elliptic

---

Ledet's Auto Sales

[ledetsautos.com](http://ledetsautos.com)

122 S. Burnside Ave

Gonzales, Louisiana 70737

© 2024 AutoRevo - All rights reserved. - Powered by [AutoRevo](#)